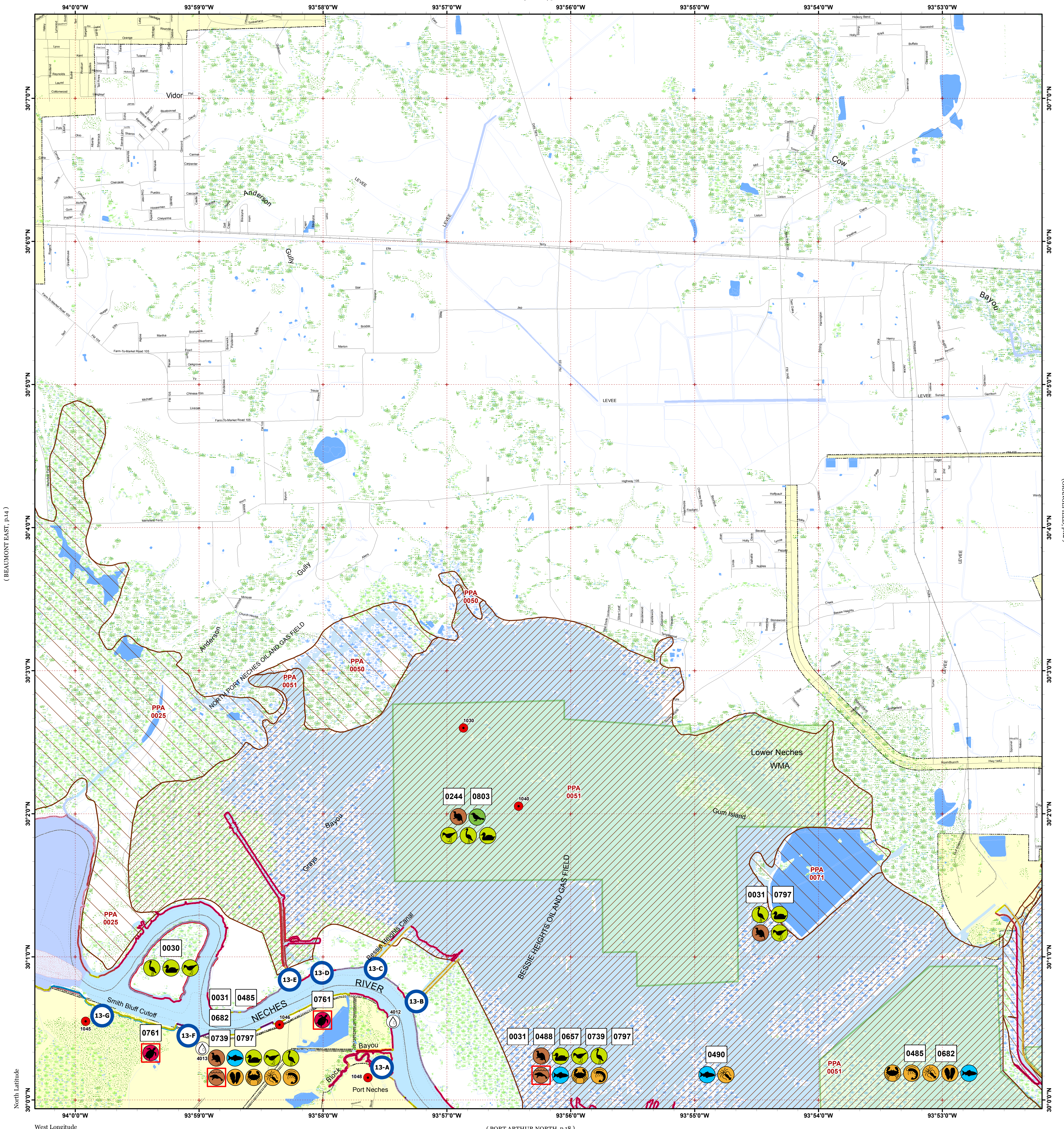


# TERRY

(TEXLA, p.8)

Click Here or Scroll Down for Associated Map Data

Click on the Geographic Response Plan Target to View the ICS Form



(BEAUMONT EAST, p.14)

(ORANGFIELD, p.12)

North Latitude

West Longitude

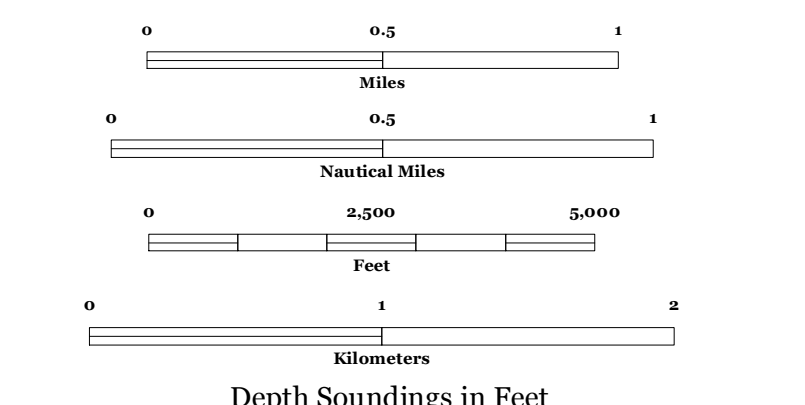
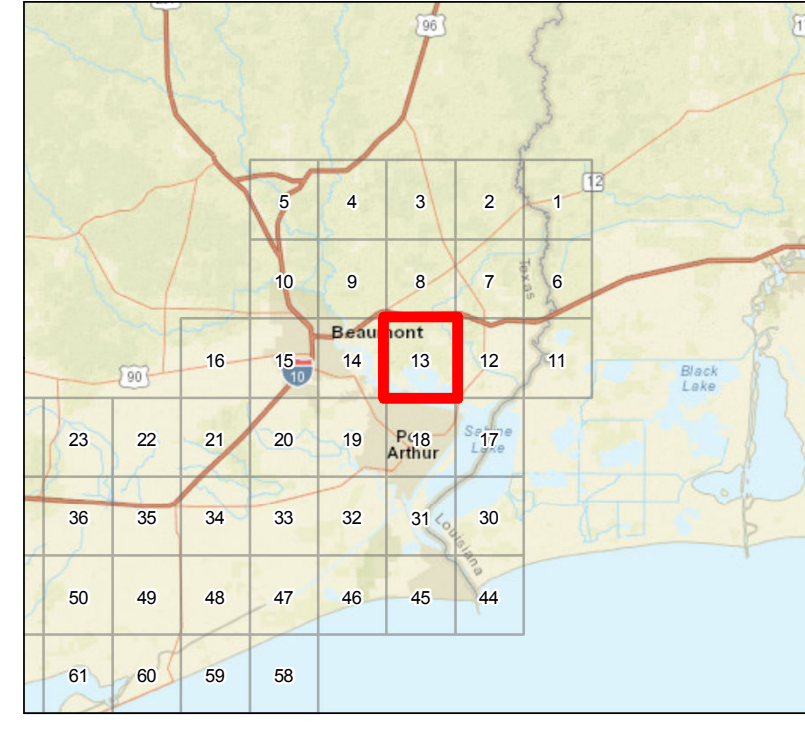
(PORT ARTHUR NORTH, p.18)



Oil Spill Planning and Response Atlas

2016

The Texas General Land Office makes no representations or warranties regarding the accuracy or completeness of the information depicted on this map or the data from which it was produced. This map is not suitable for navigational purposes and does not purport to depict boundaries of private and public land.



- Human Use Features**
- Facility
  - Water Intake
  - Geographic Response Plan

- Map Base Layers**
- Railroads
  - Road
  - GIWW
  - State Parks/WMA's
  - Bays
  - Salt and Brackish Marshes
  - Intertidal Scrub/Shrub
  - Freshwater Marshes
  - Swamps and Flooded Woodlands
  - Willow Thickets
  - Lake / Pond
  - Tidally Influenced River
  - Perennial River
  - County Boundary
  - City Limits

- Priority Protection Areas**
- HIGH
  - LOW

- Species Icons Within Map Quad**
- Turtle T/E
  - Benthic Marine
  - Bivalve
  - Crab
  - Shrimp
  - Fish
  - Mammal T/E
  - Small Mammal
  - Passerine
  - Shorebird
  - Waterfowl

- ENVIRONMENTAL SENSITIVITY INDEX**
- 10D Mangroves and Woody Vegetation
  - 10C Freshwater Swamps
  - 10B Freshwater Marshes
  - 10A Salt and Brackish Water Marshes
  - 9 Sheltered Tidal Flats
  - 8C Sheltered Rocky/Karst Shores
  - 8D Sheltered Scarps
  - 8B Sheltered Riprap Structures
  - 8A Sheltered Solid Manmade Structures
  - 7 Exposed Tidal Flats
  - 6B Exposed Riprap Structures
  - 6A Gravel or Shell Beaches
  - 5 Mixed Sand and Gravel or Shell Beaches
  - 4 Coarse-Grained Sand Beaches
  - 3B Scarps and Steep Slopes in Sand
  - 3A Fine-Grained Sand Beaches
  - 2B Wave-Cut Clay Platforms
  - 2A Scarps and Steep Slopes in Clay
  - 1 Exposed Walls and Other Solid Structures



# Quadrant: TERRY

Map # :13

Biological Information for this quadrant represents known concentration areas of occurrence.

## Habitat Priority Protection Areas

PPA ID	PRIORITY	POLY DESCRIPTION	BIRDS RANK	BIRDS DESCRIPTION	FISH RANK	FISH DESCRIPTION	WETLANDS RANK	WETLANDS DESCRIPTION
PPA0025	LOW	Rose City marsh and adjacent marshes		Wading birds, waterfowl, osprey			HIGH	Fresh marsh (California bulrush, cattails, arrowheads), some cypress stands
PPA0050	LOW	North margin of Bessie Heights marsh					HIGH	
PPA0051	HIGH	Bessie Heights Marsh (largely submerged)	HIGH	Feeding area for wading birds, waterfowl; nesting by moorhen, rails, wading birds; river otter	HIGH	Abundant red drum, sheepshead, juvenile blue crab; high priority fishing area, commercial crabbing	HIGH	Formerly vegetated marsh, but now primarily open water
PPA0071	LOW	Reservoir southeast of Bessie Heights	HIGH					

## Biological Resources

### Bird

RARNUM	NAME	S F	T E	CONC	J	F	M	A	M	J	J	A	S	O	N	D	Nesting	Migrating	Molting
0030	Shorebirds			-	X	X	X	X	X		X	X	X	X	X	X	-	-	-
	Wading birds			-	X	X	X	X	X	X	X	X	X	X	X	X	-	-	-
	Ducks			-	X	X	X	X	X				X	X	X	X	-	-	-
0031	Black-necked stilt			10S		X	X	X	X	X	X	X	X	X			-	-	-
	Dowitchers			100S	X	X	X	X	X			X	X	X	X	X	-	JUL-MAY*	-
	Dunlin			100S	X	X	X	X	X			X	X	X	X	X	-	-	-
	Killdeer			100S	X	X	X	X	X	X	X	X	X	X	X	X	-	DEC-MAR	-
	Shorebirds			100S	X	X	X	X	X			X	X	X	X	X	-	-	-
	Western sandpiper			100S	X	X	X	X	X	X	X	X	X	X	X	X	-	JUL-MAY*	-
	Willet			100S	X	X	X	X	X	X	X	X	X	X	X	X	-	AUG-APR*	-
	Yellowlegs			10S	X	X	X	X	X			X	X	X	X	X	-	JUL-MAY*	-
	Marsh birds			-	X	X	X	X	X	X	X	X	X	X	X	X	-	-	-
	Wading birds			-	X	X	X	X	X	X	X	X	X	X	X	X	-	-	-
	Mottled duck			-	X	X	X	X	X	X	X	X	X	X	X	X	FEB-AUG	-	JUN-AUG
0244	Waterfowl			-	X	X	X	X	X	X	X	X	X	X	X	X	-	-	-
	Swamp sparrow			-	X	X	X	X						X	X	X	-	-	-
	Black-necked stilt			10S		X	X	X	X	X	X	X	X	X			-	-	-
	Dowitchers			100S	X	X	X	X	X			X	X	X	X	X	-	JUL-MAY*	-
	Dunlin			100S	X	X	X	X	X				X	X	X	X	-	-	-
	Killdeer			100S	X	X	X	X	X	X	X	X	X	X	X	X	-	DEC-MAR	-
	Shorebirds			100S	X	X	X	X	X			X	X	X	X	X	-	-	-
	Western sandpiper			100S	X	X	X	X	X	X	X	X	X	X	X	X	-	JUL-MAY*	-
	Willet			100S	X	X	X	X	X	X	X	X	X	X	X	X	-	AUG-APR*	-
	Yellowlegs			10S	X	X	X	X	X			X	X	X	X	X	-	JUL-MAY*	-
	Marsh birds			-	X	X	X	X	X	X	X	X	X	X	X	X	-	-	-
Wading birds			-	X	X	X	X	X	X	X	X	X	X	X	X	-	-	-	
Mottled duck			-	X	X	X	X	X	X	X	X	X	X	X	X	FEB-AUG	-	JUN-AUG	
Waterfowl			-	X	X	X	X	X	X	X	X	X	X	X	X	-	-	-	

### Fish

RARNUM	NAME	S F	T E	CONC	J	F	M	A	M	J	J	A	S	O	N	D	Spawning	Eggs	Larvae	Juveniles	Adults
0485	Gizzard shad			ABUNDANT	X	X	X	X	X	X	X	X	X	X	X	X	-	-	-	-	JAN-DEC
	Atlantic croaker			HIGHLY-ABUNDANT	X	X	X	X	X	X	X	X	X	X	X	X	-	-	JAN-JUN	JAN-DEC	JAN-DEC
	Bay anchovy			COMMON	X	X	X	X	X	X	X	X	X	X	X	X	MAR-NOV	MAR-NOV	MAR-NOV	JAN-DEC	JAN-DEC
	Black drum			COMMON	X	X	X	X	X	X	X	X	X	X	X	X	-	-	-	JAN-DEC	JAN-DEC
	Bull shark			RARE	X	X	X	X	X	X	X	X	X	X	X	X	-	MAY-AUG	MAY-AUG	APR-NOV	JAN-DEC
	Gafftopsail catfish			ABUNDANT				X	X	X	X	X	X	X			APR-MAY	-	-	APR-OCT	APR-OCT
	Gulf menhaden			ABUNDANT	X	X	X	X	X	X	X	X	X	X	X	X	-	-	-	JAN-DEC	APR-DEC
	Hardhead catfish			ABUNDANT	X	X	X	X	X	X	X	X	X	X	X	X	MAY-AUG	MAY-SEP	MAY-SEP	JUN-SEP	JAN-DEC
	Pinfish			RARE				X	X	X	X	X	X	X			-	-	-	APR-OCT	APR-OCT
	Red drum			COMMON	X	X	X	X	X	X	X	X	X	X	X	X	-	-	-	JAN-DEC	JAN-DEC
	Sand seatrout			COMMON	X	X	X	X	X	X	X	X	X	X	X	X	-	-	-	JAN-DEC	JAN-DEC
	Sheepshead			COMMON	X	X	X	X	X	X	X	X	X	X	X	X	-	-	-	DEC-FEB	JAN-DEC
	Southern flounder			COMMON	X	X	X	X	X	X	X	X	X	X	X	X	-	-	-	JAN-DEC	JAN-DEC
	Spot			HIGHLY-ABUNDANT				X	X	X	X	X	X	X	X	X	-	-	-	MAR-OCT	MAR-NOV
	Spotted seatrout			COMMON	X	X	X	X	X	X	X	X	X	X	X	X	APR-OCT	APR-OCT	APR-OCT	OCT-NOV	JAN-DEC
	Star drum			-	X	X	X	X	X	X	X	X	X	X	X	X	-	-	-	-	-
	Striped mullet			COMMON	X	X	X	X	X	X	X	X	X	X	X	X	-	-	-	JAN-DEC	JAN-DEC
	Tarpon			RARE				X	X	X	X	X	X	X	X		-	-	-	MAR-NOV	-
	White mullet			COMMON						X	X	X	X				-	-	-	JUN-SEP	-
	Gulf killifish			COMMON	X	X	X	X	X	X	X	X	X	X	X	X	MAR-SEP	MAR-SEP	MAR-OCT	JAN-DEC	JAN-DEC
	Silver perch			RARE	X	X	X	X	X	X	X	X	X	X	X	X	MAY-SEP	MAY-SEP	MAY-SEP	OCT-NOV	JAN-DEC
	Silversides			COMMON	X	X	X	X	X	X	X	X	X	X	X	X	MAR-AUG	MAR-AUG	MAR-AUG	JAN-DEC	JAN-DEC
	Alligator gar			COMMON	X	X	X	X	X	X	X	X	X	X	X	X	-	-	-	JAN-DEC	JAN-DEC
Spotted gar			ABUNDANT	X	X	X	X	X	X	X	X	X	X	X	X	APR-MAY	APR-MAY	-	JAN-DEC	JAN-DEC	
Atlantic spadefish			RARE						X	X	X	X				-	-	-	JUL-OCT	-	
Bay whiff			RARE	X	X	X	X	X	X	X	X	X	X	X	X	-	-	-	JUL-AUG	JAN-DEC	
Spotfin mojarra			RARE								X	X				-	-	-	-	-	
Atlantic bumper			RARE								X	X				-	-	-	-	AUG-SEP	
Crevalle jack			COMMON						X	X	X					-	-	-	JUN-AUG	-	
Spanish mackerel			COMMON									X	X			-	-	-	SEP-OCT	SEP-OCT	
0488	Gizzard shad			ABUNDANT	X	X	X	X	X	X	X	X	X	X	X	X	-	-	-	JAN-DEC	JAN-DEC
	Atlantic croaker			HIGHLY-ABUNDANT	X	X	X	X	X	X	X	X	X	X	X	X	-	-	JAN-JUN	JAN-DEC	JAN-DEC
	Black drum			COMMON	X	X	X	X	X	X	X	X	X	X	X	X	-	-	-	JAN-DEC	-
	Bull shark			RARE	X	X	X	X	X	X	X	X	X	X	X	X	-	MAY-AUG	MAY-AUG	APR-NOV	JAN-DEC

## Fish

RARNUM	NAME	S F	T E	CONC	J	F	M	A	M	J	J	A	S	O	N	D	Spawning	Eggs	Larvae	Juveniles	Adults
	Gafftopsail catfish			COMMON				X	X	X	X	X	X	X			APR-MAY	-	-	APR-OCT	APR-OCT
	Gulf menhaden			ABUNDANT	X	X	X	X	X	X	X	X	X	X	X	X	-	-	-	JAN-DEC	SEP-OCT
	Hardhead catfish			ABUNDANT	X	X	X	X	X	X	X	X	X	X	X	X	MAY-AUG	MAY-SEP	MAY-SEP	MAR-NOV	JAN-DEC
	Red drum			ABUNDANT	X	X	X	X	X	X	X	X	X	X	X	X	-	-	-	JAN-DEC	JAN-DEC
	Sheepshead			COMMON	X	X	X	X	X	X	X	X	X	X	X	X	-	-	-	JAN-DEC	JAN-DEC
	Southern flounder			COMMON	X	X	X	X	X	X	X	X	X	X	X	X	-	-	-	JAN-DEC	JAN-DEC
	Spot			HIGHLY-ABUNDANT	X	X	X	X	X	X	X	X	X	X	X	X	-	-	-	JAN-DEC	MAR-NOV
	Spotted seatrout			COMMON				X	X	X	X	X	X	X	X		-	-	APR-OCT	SEP-NOV	APR-OCT
	Striped mullet			COMMON	X	X	X	X	X	X	X	X	X	X	X	X	-	-	-	JAN-DEC	JAN-DEC
	Alligator gar			COMMON	X	X	X	X	X	X	X	X	X	X	X	X	-	-	-	JAN-DEC	JAN-DEC
	Blue catfish			RARE	X	X	X	X	X	X	X	X	X	X	X	X	-	-	-	JAN-DEC	JAN-DEC
	Longnose gar			COMMON	X	X	X	X	X	X	X	X	X	X	X	X	-	-	-	-	-
	Smallmouth buffalo			-	X	X	X	X	X	X	X	X	X	X	X	X	-	-	-	-	JAN-DEC
	Spotted gar			ABUNDANT	X	X	X	X	X	X	X	X	X	X	X	X	APR-MAY	APR-MAY	-	JAN-DEC	JAN-DEC
0490	Gizzard shad			ABUNDANT	X	X	X	X	X	X	X	X	X	X	X	X	-	-	-	-	JAN-DEC
	Atlantic croaker			HIGHLY-ABUNDANT	X	X	X	X	X	X	X	X	X	X	X	X	-	-	JAN-JUN	JAN-DEC	JAN-DEC
	Bay anchovy			COMMON	X	X	X	X	X	X	X	X	X	X	X	X	MAR-NOV	MAR-NOV	MAR-NOV	JAN-DEC	JAN-DEC
	Black drum			COMMON	X	X	X	X	X	X	X	X	X	X	X	X	-	-	-	JAN-DEC	JAN-DEC
	Bull shark			RARE	X	X	X	X	X	X	X	X	X	X	X	X	-	MAY-AUG	MAY-AUG	APR-NOV	JAN-DEC
	Gafftopsail catfish			ABUNDANT				X	X	X	X	X	X				APR-MAY	-	-	APR-OCT	APR-OCT
	Gulf menhaden			ABUNDANT	X	X	X	X	X	X	X	X	X	X	X	X	-	-	-	JAN-DEC	APR-DEC
	Hardhead catfish			ABUNDANT	X	X	X	X	X	X	X	X	X	X	X	X	MAY-AUG	MAY-SEP	MAY-SEP	JUN-SEP	JAN-DEC
	Pinfish			RARE				X	X	X	X	X	X				-	-	-	APR-OCT	APR-OCT
	Red drum			COMMON	X	X	X	X	X	X	X	X	X	X	X	X	-	-	-	JAN-DEC	JAN-DEC
	Sand seatrout			COMMON	X	X	X	X	X	X	X	X	X	X	X	X	-	-	-	JAN-DEC	JAN-DEC
	Sheepshead			COMMON	X	X	X	X	X	X	X	X	X	X	X	X	-	-	-	DEC-FEB	JAN-DEC
	Southern flounder			COMMON	X	X	X	X	X	X	X	X	X	X	X	X	-	-	-	JAN-DEC	JAN-DEC
	Spot			HIGHLY-ABUNDANT			X	X	X	X	X	X	X	X			-	-	-	MAR-OCT	MAR-NOV
	Spotted seatrout			COMMON	X	X	X	X	X	X	X	X	X	X	X	X	APR-OCT	APR-OCT	APR-OCT	OCT-NOV	JAN-DEC
	Star drum			-	X	X	X	X	X	X	X	X	X	X	X	X	-	-	-	-	-
	Striped mullet			COMMON	X	X	X	X	X	X	X	X	X	X	X	X	-	-	-	JAN-DEC	JAN-DEC
	White mullet			COMMON						X	X	X	X				-	-	-	JUN-SEP	-
	Gulf killifish			COMMON	X	X	X	X	X	X	X	X	X	X	X	X	MAR-SEP	MAR-SEP	MAR-OCT	JAN-DEC	JAN-DEC
	Silver perch			RARE	X	X	X	X	X	X	X	X	X	X	X	X	MAY-SEP	MAY-SEP	MAY-SEP	OCT-NOV	JAN-DEC
	Silversides			COMMON	X	X	X	X	X	X	X	X	X	X	X	X	MAR-AUG	MAR-AUG	MAR-AUG	JAN-DEC	JAN-DEC
	Alligator gar			COMMON	X	X	X	X	X	X	X	X	X	X	X	X	-	-	-	JAN-DEC	JAN-DEC
	Spotted gar			ABUNDANT	X	X	X	X	X	X	X	X	X	X	X	X	APR-MAY	APR-MAY	-	JAN-DEC	JAN-DEC
	Atlantic spadefish			RARE						X	X	X	X				-	-	-	JUL-OCT	-
	Bay whiff			RARE	X	X	X	X	X	X	X	X	X	X	X	X	-	-	-	JUL-AUG	JAN-DEC
	Spotfin mojarra			RARE								X	X				-	-	-	-	-
	Atlantic bumper			RARE								X	X				-	-	-	-	AUG-SEP
	Crevalle jack			COMMON						X	X	X					-	-	-	JUN-AUG	-
	Spanish mackerel			COMMON									X	X			-	-	-	SEP-OCT	SEP-OCT

## Invertebrate

RARNUM	NAME	S F	T E	CONC	J	F	M	A	M	J	J	A	S	O	N	D	Spawning	Eggs	Larvae	Juveniles	Adults
0657	Blue crab			HIGHLY-ABUNDANT	X	X	X	X	X	X	X	X	X	X	X	X	MAR-NOV	-	MAR-NOV	JAN-DEC	JAN-DEC
	Brown shrimp			COMMON			X	X	X	X	X	X	X	X	X	X	-	-	MAR-APR	APR-DEC	-
	Grass shrimp			COMMON	X	X	X	X	X	X	X	X	X	X	X	X	JAN-DEC	JAN-DEC	JAN-DEC	JAN-DEC	JAN-DEC
	White shrimp			COMMON	X	X	X	X	X	X	X	X	X	X	X	X	-	-	MAY-JUN	APR-DEC	MAR-JAN
0682	Atlantic rangia			ABUNDANT	X	X	X	X	X	X	X	X	X	X	X	X	MAR-OCT	-	MAR-OCT	JAN-DEC	JAN-DEC
	Blue crab			ABUNDANT	X	X	X	X	X	X	X	X	X	X	X	X	MAR-NOV	-	MAR-NOV	JAN-DEC	JAN-DEC
	Brown shrimp			ABUNDANT			X	X	X	X	X	X	X	X	X	X	-	-	MAR-APR	APR-DEC	-
	Grass shrimp			COMMON	X	X	X	X	X	X	X	X	X	X	X	X	JAN-DEC	JAN-DEC	JAN-DEC	JAN-DEC	JAN-DEC
	White shrimp			HIGHLY-ABUNDANT	X	X	X	X	X	X	X	X	X	X	X	X	-	-	MAY-JUN	APR-DEC	MAR-JAN

## Marine Mammal

RARNUM	NAME	S F	T E	CONC	J	F	M	A	M	J	J	A	S	O	N	D	Mating	Calving	Pupping	Molting
0739	West Indian manatee	S/F	E/E	VERY-RARE						X	X	X					-	-	-	-

## Reptile

RARNUM	NAME	S F	T E	CONC	J	F	M	A	M	J	J	A	S	O	N	D	Nesting	Hatching	Interesting	Juveniles	Adults
0761	Kemp's ridley sea turtle	S/F	E/E	COMMON				X	X	X	X	X	X	X	X		-	-	-	APR-NOV	-

## Terrestrial Mammal

RARNUM	NAME	S F	T E	CONC	J	F	M	A	M	J	J	A	S	O	N	D	Nesting
0797	Northern river otter			-			X	X	X	X	X	X	X	X	X	X	N/A
0803	Muskrat			-			X	X	X	X	X	X	X	X	X	X	N/A
	Northern river otter			-			X	X	X	X	X	X	X	X	X	X	N/A
	Swamp rabbit			-			X	X	X	X	X	X	X	X	X	X	N/A

### Human Use Resources

Facility	RARNUM	NAME	CONTACT	CONTACT INFO
	1030	Stark	Steve Barnes	940-736-3353
	1040	Port Neches Field (Bessie Heights)	Andreana Madar	281-217-1176
	1045	Sunoco Pipe Line L.P. 'Sour Lake District'	Graydon Cowgill	409-287-3528
	1046	Phillips 66 Beaumont Terminal	Billy Castleman	800-231-2551
	1048	Oak Bluff Memorial Park	Jim Hauck	409-284-6524
Water Intake	RARNUM	NAME	CONTACT	CONTACT INFO
	4012	INDEPENDENT REFINING CORP.		
	4013	UNION OIL OF CALIFORNIA		

1. Incident Name	2. Operational Period (Date/Time)	Assignment List ICS 204-OS
------------------	-----------------------------------	----------------------------

3. Branch	4. Division/Group
-----------	-------------------

5. Operations Personnel	
Operations Section Chief	_____
Branch Director	_____
Division/Group Supervisor	_____

6. Resources Assigned This Period "X" Indicates 204a attachment with special instructions

Resource Identifier	Leader	Contact Info #	# of Persons	Reporting Info/Notes/Remarks

7. Assignments
----------------

**SAFETY NOTE:** Shallow, submerged stumps and logs, residential area and reptiles in area.

8. Site Number: 13-A	9. Quad Name Terry	10. NOAA Chart # 11343	11. GLO Atlas Page # 13	12. County Jefferson
-------------------------	-----------------------	---------------------------	----------------------------	-------------------------

13. Site Information: <b>13-A</b> Site 13-A is Block Bayou, which consists of two inlets that merge into one. The two inlets are located approximately 0.75 miles North of Port Neches Park on the West bank of the Neches River. These inlets have road access from Chevron Pipeline Co. tank farm property and from Oak Bluff Memorial Cemetery inside the residential area in Port Neches. The shores of both inlets of Block Bayou are wooded with sloping banks. The small island that is formed from the two inlets merging is susceptible to inundation during high tidal cycles. The banks of the bayou consist of brackish water marsh flora & fauna. Economic Contacts Chevron Pipeline Co. 409-722-3441.	14. Latitude From: <b>N 30°00'09.75"</b>	To:		15. Longitude From: <b>W 93°57'27.05"</b>	To:
--	---	-----	--	--	-----

16. Closest Boat Ramp Port Neches Park	17. Distance From Ramp .75 Miles	18. Boat Type Flat Bottom Boat
---	-------------------------------------	-----------------------------------

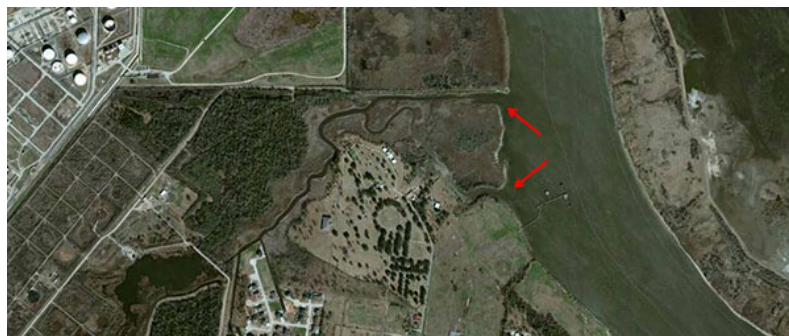
19. Directions From Local Sector To reach Port Neches Park you would take Hwy 365 toward Port Neches. Take a Right on Hwy 366 and continue down to the first red light, which is Merriman. Take a Left on Merriman. Travel past Port Neches High School. The park is located at the end of Merriman.	20. Closest Airport Jefferson County Airport	21. Closest Helo Spot Jefferson County Airport
---	---	---

22. Trustee/Contact Numbers USCG: (409) 723-6509    RRC: (713)869-5001 USCG DUTY: (409) 719-1597    TPWD: (409)892-8666 TGLO: (800) 832-8224    NRDA: (512) 463 -9309 TCEQ: (409)781-9330    USFWS: (281) 286-8282	23. Resources at Risk Atlas Priority High  Environmental Brackish marsh habitat for threatened osprey, river otter, wading birds, shore birds.  Economic Residential area, commercial tra	24. Width of inlet North 240 ft., South 320 ft. in ft. 25. Water depth in ft. 2 - 5 ft. 26. Current Medium 27. No. of Personnel 4
--	--	--

25. Booming Strategy Recommendation Boom should be configured in an exclusion and or deflection pattern as to prevent oil from entering cut. Bring sufficient anchors and rope to accomplish task.
---

AERIAL PHOTO

ON SITE PHOTO



29. Prepared By:	30. Reviewed by (PSC)	31. Reviewed by (OSC):
Assignment List	ICS 204 OS (Geographic Response Plan)	Project Updated:

"Response strategies may need to be modified to account for changes due to seasonality, weather conditions, spill characteristics, tides and any other considerations."

1. Incident Name	2. Operational Period (Date/Time)	Assignment List ICS 204-OS
------------------	-----------------------------------	----------------------------

3. Branch	4. Division/Group
-----------	-------------------

5. Operations Personnel	
Operations Section Chief	_____
Branch Director	_____
Division/Group Supervisor	_____

6. Resources Assigned This Period						"X" Indicates 204a attachment with special instructions
Resource Identifier	Leader	Contact Info #	# of Persons	Reporting Info/Notes/Remarks		

7. Assignments
----------------

**SAFETY NOTE:** Piling are located at the end of channel, strong currents, and reptiles in area

8. Site Number: 13-B	9. Quad Name Terry	10. NOAA Chart # 11343	11. GLO Atlas Page # 13	12. County Orange
-------------------------	-----------------------	---------------------------	----------------------------	----------------------

13. Site Information: <b>13-B</b> Site 13-B is the first unnamed inlet South of Bessie Heights Canal located on the East bank of the Neches River. It is approximately 1 mile from Port Neches Park. This inlet leads to Bessie Heights Oil and Gas Field. This inlet is only accessible by a small john boat due to pilings positioned at the end of the channel. The shore is mixed with open range and brush. A cattle ranch is located along the banks.	14. Latitude From: N 30°00'39 "	To:	
	15. Longitude From: W 93°57' 18"	To:	

16. Closest Boat Ramp Port Neches Park	17. Distance From Ramp 1 Mile	18. Boat Type Semi V Hull Boat
---	----------------------------------	-----------------------------------

19. Directions From Local Sector To reach Port Neches Park you would take Hwy 365 toward Port Neches. Take a Right on Hwy 366 and continue down to the first red light, which is Merriman. Take a Left on Merriman. Travel past Port Neches High School. The park is located at the end of Merriman.	20. Closest Airport Jefferson County Airport	21. Closest Helo Spot Jefferson County Airport
---	---	---

22. Trustee/Contact Numbers USCG: (409) 723-6509    RRC: (713)869-5001 USCG DUTY: (409) 719-1597    TPWD: (409)892-8666 TGLO: (800) 832-8224    NRDA: (512) 463 -9309 TCEQ: (409)781-9330    USFWS: (281) 286-8282	23. Resources at Risk Atlas Priority High  Environmental Brackish marsh habitat for threatened osprey, river otter, wading birds, shore birds, Economic Commercial/Agriculture.	24. Width of inlet 400' in ft. 25. Water depth in ft. 13 ft. 26. Current Fast 27. No. of Personnel >6
--	---	--

25. Booming Strategy Recommendation Boom should be configured in a deflection pattern as to prevent oil from entering cut. See Page two for instructions.
--

AERIAL PHOTO



ON SITE PHOTO

29. Prepared By:	30. Reviewed by (PSC)	31. Reviewed by (OSC):
Assignment List	ICS 204 OS (Geographic Response Plan)	Project Updated:

"Response strategies may need to be modified to account for changes due to seasonality, weather conditions, spill characteristics, tides and any other considerations."



**Equipment:**

1100 ft of 18" boom

4 anchor systems with 40lb anchors

8 towing bridles for booming systems

8 T-posts

Come-along or block-and-tackle (to assist in the tightening of boom from shore)

3 boats

Proper length of line



1. Incident Name	2. Operational Period (Date/Time)	Assignment List ICS 204-OS
------------------	-----------------------------------	----------------------------

3. Branch	4. Division/Group
-----------	-------------------

5. Operations Personnel	Operations Section Chief _____
Branch Director _____	Division/Group Supervisor _____

6. Resources Assigned This Period						"X" Indicates 204a attachment with special instructions
Resource Identifier	Leader	Contact Info #	# of Persons	Reporting Info/Notes/Remarks		

7. Assignments
----------------

**SAFETY NOTE:** Strong currents and reptiles in the area.

8. Site Number: 13-C	9. Quad Name Terry	10. NOAA Chart # 11343	11. GLO Atlas Page # 13	12. County Orange
-------------------------	-----------------------	---------------------------	----------------------------	----------------------

13. Site Information: <b>13-C</b> Site 13-C is Bessie Heights Canal. This site is located on the East bank of the Neches River approximately 1.25 miles North of Port Neches Park. This canal leads to Bessie Heights Oil and Gas field and a highly sensitive marsh. The banks of this inlet consist of sand, clay, flat grassland, and brush. Both banks are used for cattle ranching. Economic Contacts: Chevron Pipeline Co., 409-722-3441.	14. Latitude From: <b>N 30°00'56"</b>	To:	15. Longitude From: <b>W 93°57'37"</b>	To:
--	--	-----	---	-----

16. Closest Boat Ramp Port Neches Park	17. Distance From Ramp 1.25	18. Boat Type Flat Bottom Boat
---	--------------------------------	-----------------------------------

19. Directions From Local Sector To reach Port Neches Park you would take Hwy 365 toward Port Neches. Take a Right on Hwy 366 and continue down to the first red light, which is Merriman. Take a Left on Merriman. Travel past Port Neches High School. The park is located at the end of Merriman.	20. Closest Airport Jefferson County Airport
	21. Closest Helo Spot Jefferson County Airport

22. Trustee/Contact Numbers USCG: (409) 723-6509    RRC: (713)869-5001 USCG DUTY: (409) 719-1597    TPWD: (409)892-8666 TGLO: (800) 832-8224    NRDA: (512) 463 -9309 TCEQ: (409)781-9330    USFWS: (281) 286-8282	23. Resources at Risk Atlas Priority High  Environmental Brackish marsh habitat for threatened osprey, river otter, wading birds, shore birds.  Economic Commercial/Agriculture.	24. Width of inlet 270' in ft. 25. Water depth in ft. 12 ft. 26. Current Fast 27. No. of Personnel >6
--	---	--

25. Booming Strategy Recommendation Boom should be configured in a deflection pattern as to prevent oil from entering cut. See Page two for instructions.
--



29. Prepared By:	30. Reviewed by (PSC)	31. Reviewed by (OSC):
Assignment List	ICS 204 OS (Geographic Response Plan)	Project Updated:

"Response strategies may need to be modified to account for changes due to seasonality, weather conditions, spill characteristics, tides and any other considerations."

**Equipment:**

3 X 200ft of 18" boom

1 X 300ft of 18" boom

4 anchor systems with 40lb anchors

4 floats for anchor systems

8 towing bridles for booming systems

8 T-posts

Come-along or block-and-tackle (to assist in the tightening of boom from shore)

3 boats

Proper length of line





1. Incident Name	2. Operational Period (Date/Time)	Assignment List ICS 204-OS
------------------	-----------------------------------	----------------------------

3. Branch	4. Division/Group
-----------	-------------------

5. Operations Personnel	_____
Operations Section Chief	_____
Branch Director	_____
Division/Group Supervisor	_____

6. Resources Assigned This Period					"X" Indicates 204a attachment with special instructions
Resource Identifier	Leader	Contact Info #	# of Persons	Reporting Info/Notes/Remarks	

7. Assignments
----------------

**SAFETY NOTE:** Strong currents, submerged objects and reptiles in area.

8. Site Number: 13-D	9. Quad Name Terry	10. NOAA Chart # 11343	11. GLO Atlas Page # 13	12. County Orange
-------------------------	-----------------------	---------------------------	----------------------------	----------------------

13. Site Information: 13-D Site 13-D is the closed in natural Gray's Bayou cut. This site is located on the East bank of the Neches River approximately 1.75 miles North of Port Neches Park. The banks of this Bayou consist of sand, clay, flat grassland, and brush. The site could be used as a collection point. Economic Contacts: Chevron Pipeline Co. 409-722-3441.	14. Latitude From: N 30°00'53.51"	To:	
	15. Longitude From: W 93°58'3.02"	To:	

16. Closest Boat Ramp Port Neches Park	17. Distance From Ramp 1.75 Miles	18. Boat Type Flat Bottom Boat
---	--------------------------------------	-----------------------------------

19. Directions From Local Sector To reach Port Neches Park you would take Hwy 365 toward Port Neches. Take a Right on Hwy 366 and continue down to the first red light, which is Merriman. Take a Left on Merriman. Travel past Port Neches High School. The park is located at the end of Merriman.	20. Closest Airport Jefferson County Airport
	21. Closest Helo Spot Jefferson County Airport

22. Trustee/Contact Numbers USCG: (409) 723-6509 RRC: (713)869-5001 USCG DUTY: (409) 719-1597 TPWD: (409)892-8666 TGLO: (800) 832-8224 NRDA: (512) 463 -9309 TCEQ: (409)781-9330 USFWS: (281) 286-8282	23. Resources at Risk Atlas Priority Low Environmental Brackish Marsh habitat Economic Commercial/Agriculture.	24. Width of inlet 300' in ft. 25. Water depth in ft. 2-4 ft. 26. Current Fast 27. No. of Personnel 4
--	---	--

25. Booming Strategy Recommendation Boom should be configured in an exclusion and or deflection pattern as to prevent oil from entering cut. Bring sufficient anchors and rope to accomplish task.
---



29. Prepared By:	30. Reviewed by (PSC)	31. Reviewed by (OSC):
Assignment List	ICS 204 OS (Geographic Response Plan)	Project Updated:

"Response strategies may need to be modified to account for changes due to seasonality, weather conditions, spill characteristics, tides and any other considerations."



1. Incident Name	2. Operational Period (Date/Time)	Assignment List ICS 204-OS
------------------	-----------------------------------	----------------------------

3. Branch	4. Division/Group
-----------	-------------------

5. Operations Personnel Operations Section Chief _____ Branch Director _____ Division/Group Supervisor _____
---

6. Resources Assigned This Period <span style="float: right;">"X" Indicates 204a attachment with special instructions</span>					
Resource Identifier	Leader	Contact Info #	# of Persons	Reporting Info/Notes/Remarks	

7. Assignments
----------------

**SAFETY NOTE:** Strong currents, submerged objects and reptiles in area.

8. Site Number: 13-E	9. Quad Name Terry	10. NOAA Chart # 11343	11. GLO Atlas Page # 13	12. County Orange
-------------------------	-----------------------	---------------------------	----------------------------	----------------------

13. Site Information: <b>13-E</b> Site 13-E is the man-made Gray's Canal. This site is located approximately 2 miles North of Port Neches Park on the East bank of the Neches River. This canal feeds Bessie Heights marsh, which is a highly sensitive area. There are pipelines crossing warning signs on both banks of this canal. The banks of te bayou consist of brackish water marsh flora & fauna. Economic Contacts: Chevron Pipeline Co. 409-722-3441.	14. Latitude From: <b>N 30°00'48.49"</b>	To:	15. Longitude From: <b>W 93°58'14.69"</b>	To:
---	---	-----	--	-----

16. Closest Boat Ramp Port Neches Park	17. Distance From Ramp 2 Miles	18. Boat Type Flat Bottom Boat
---	-----------------------------------	-----------------------------------

19. Directions From Local Sector To reach Port Neches Park you would take Hwy 365 toward Port Neches. Take a Right on Hwy 366 and continue down to the first red light, which is Merriman. Take a Left on Merriman. Travel past Port Neches High School. The park is located at the end of Merriman.	20. Closest Airport Jefferson County Airport
	21. Closest Helo Spot Jefferson County Airport

22. Trustee/Contact Numbers USCG: (409) 723-6509    RRC: (713)869-5001 USCG DUTY: (409) 719-1597    TPWD: (409)892-8666 TGLO: (800) 832-8224    NRDA: (512) 463 -9309 TCEQ: (409)781-9330    USFWS: (281) 286-8282	23. Resources at Risk Atlas Priority High  Environmental    Brackish marsh habitat for threatened osprey, river otter, wading birds, shore birds.  Economic    Commercial/Agriculture	24. Width of inlet    320' in ft. 25. Water depth in ft.    5-10 ft. 26. Current    Fast 27. No. of Personnel    4
--	--	---

25. Booming Strategy Recommendation Boom should be configured in an exclusion and or deflection pattern as to prevent oil from entering cut. Bring sufficient anchors and rope to accomplish task.
---



29. Prepared By:	30. Reviewed by (PSC)	31. Reviewed by (OSC):
Assignment List	ICS 204 OS (Geographic Response Plan)	Project Updated:

"Response strategies may need to be modified to account for changes due to seasonality, weather conditions, spill characteristics, tides and any other considerations."



1. Incident Name	2. Operational Period (Date/Time)	Assignment List ICS 204-OS
------------------	-----------------------------------	----------------------------

3. Branch	4. Division/Group
-----------	-------------------

5. Operations Personnel	_____
Operations Section Chief	_____
Branch Director	_____
Division/Group Supervisor	_____

6. Resources Assigned This Period						"X" Indicates 204a attachment with special instructions
Resource Identifier	Leader	Contact Info #	# of Persons	Reporting Info/Notes/Remarks		

7. Assignments
----------------

**SAFETY NOTE:** Commercial/ Industrial Area, strong currents and movements of deep draft vessels.

8. Site Number: 13-F	9. Quad Name Terry	10. NOAA Chart # 11343	11. GLO Atlas Page # 13	12. County Jefferson
-------------------------	-----------------------	---------------------------	----------------------------	-------------------------

13. Site Information: <b>13-F</b> Site 13-F is the intake point for Chevron Pipeline Co. located approximately 2.25 miles North of Port Neches Park on the West bank of the Neches River. Notify Chevron Pipeline Co. if a spill threatens this area. Economic Contacts: Chevron Pipeline Co. 409 722-3441. Sunoco Partners Marketing & Terminals L.P. (409) 727-2301.	14. Latitude From: <b>N 30°00'27.95"</b>	To:	
	15. Longitude From: <b>W 93°58'41.23"</b>	To:	

16. Closest Boat Ramp Port Neches Park	17. Distance From Ramp 2.25 Miles	18. Boat Type Flat Bottom Boat
---	--------------------------------------	-----------------------------------

19. Directions From Local Sector To reach Port Neches Park you would take Hwy 365 toward Port Neches. Take a Right on Hwy 366 and continue down to the first red light, which is Merriman. Take a Left on Merriman. Travel past Port Neches High School. The park is located at the end of Merriman.	20. Closest Airport Jefferson County Airport
	21. Closest Helo Spot Jefferson County Airport

22. Trustee/Contact Numbers USCG: (409) 723-6509 RRC: (713)869-5001 USCG DUTY: (409) 719-1597 TPWD: (409)892-8666 TGLO: (800) 832-8224 NRDA: (512) 463 -9309 TCEQ: (409)781-9330 USFWS: (281) 286-8282	23. Resources at Risk Atlas Priority Not rated Environmental None Economic Commercial/ Industrial area	24. Width of inlet N/A in ft. 25. Water depth in ft. 40 ft. 26. Current Fast 27. No. of Personnel 4
--	---	--

25. Booming Strategy Recommendation Inform Chevron Pipeline Co. if a spill threatens this site.
--

AERIAL PHOTO



ON SITE PHOTO

29. Prepared By:	30. Reviewed by (PSC)	31. Reviewed by (OSC):
Assignment List	ICS 204 OS (Geographic Response Plan)	Project Updated:

"Response strategies may need to be modified to account for changes due to seasonality, weather conditions, spill characteristics, tides and any other considerations."



1. Incident Name	2. Operational Period (Date/Time)	Assignment List ICS 204-OS
------------------	-----------------------------------	----------------------------

3. Branch	4. Division/Group
-----------	-------------------

5. Operations Personnel	_____
Operations Section Chief	_____
Branch Director	_____
Division/Group Supervisor	_____

6. Resources Assigned This Period						"X" Indicates 204a attachment with special instructions
Resource Identifier	Leader	Contact Info #	# of Persons	Reporting Info/Notes/Remarks		

7. Assignments
----------------

**SAFETY NOTE:** Commercial/ Industrial Area, strong currents and movements of deep draft vessels.

8. Site Number: 13-G	9. Quad Name Terry	10. NOAA Chart # 11343	11. GLO Atlas Page # 13	12. County Jefferson
-------------------------	-----------------------	---------------------------	----------------------------	-------------------------

13. Site Information: <b>13-G</b> Site 13-G is the intake point for Sunoco located on the West side of the Neches River approximately 3.25 miles North of Port Neches Park. Sunoco would need to be informed if a spill threatens this area. Economic Contacts: Chevron Pipeline Co. 409 722-3441. Sunoco Partners Marketing & Terminals L.P. (409) 727-2301.	14. Latitude From: <b>N 30°00'36.34"</b>	To:	
	15. Longitude From: <b>W 93°59'36.49"</b>	To:	

16. Closest Boat Ramp Port Neches Park	17. Distance From Ramp 3.25 Miles	18. Boat Type Flat Bottom Boat
---	--------------------------------------	-----------------------------------

19. Directions From Local Sector To reach Port Neches Park you would take Hwy 365 toward Port Neches. Take a Right on Hwy 366 and continue down to the first red light, which is Merriman. Take a Left on Merriman. Travel past Port Neches High School. The park is located at the end of Merriman.	20. Closest Airport Jefferson County Airport
	21. Closest Helo Spot Jefferson County Airport

22. Trustee/Contact Numbers	23. Resources at Risk	24. Width of inlet N/A in ft.
USCG: (409) 723-6509 RRC: (713)869-5001	Atlas Priority Not rated	25. Water depth in ft. 25 ft.
USCG DUTY: (409) 719-1597 TPWD: (409)892-8666	Environmental None	26. Current Fast
TGLO: (800) 832-8224 NRDA: (512) 463 -9309	Economic Commercial/Industrial area	27. No. of Personnel <b>4-6</b>
TCEQ: (409)781-9330 USFWS: (281) 286-8282		

25. Booming Strategy Recommendation
-------------------------------------

AERIAL PHOTO

ON SITE PHOTO



29. Prepared By:	30. Reviewed by (PSC)	31. Reviewed by (OSC):
Assignment List	ICS 204 OS (Geographic Response Plan)	Project Updated:

"Response strategies may need to be modified to account for changes due to seasonality, weather conditions, spill characteristics, tides and any other considerations."