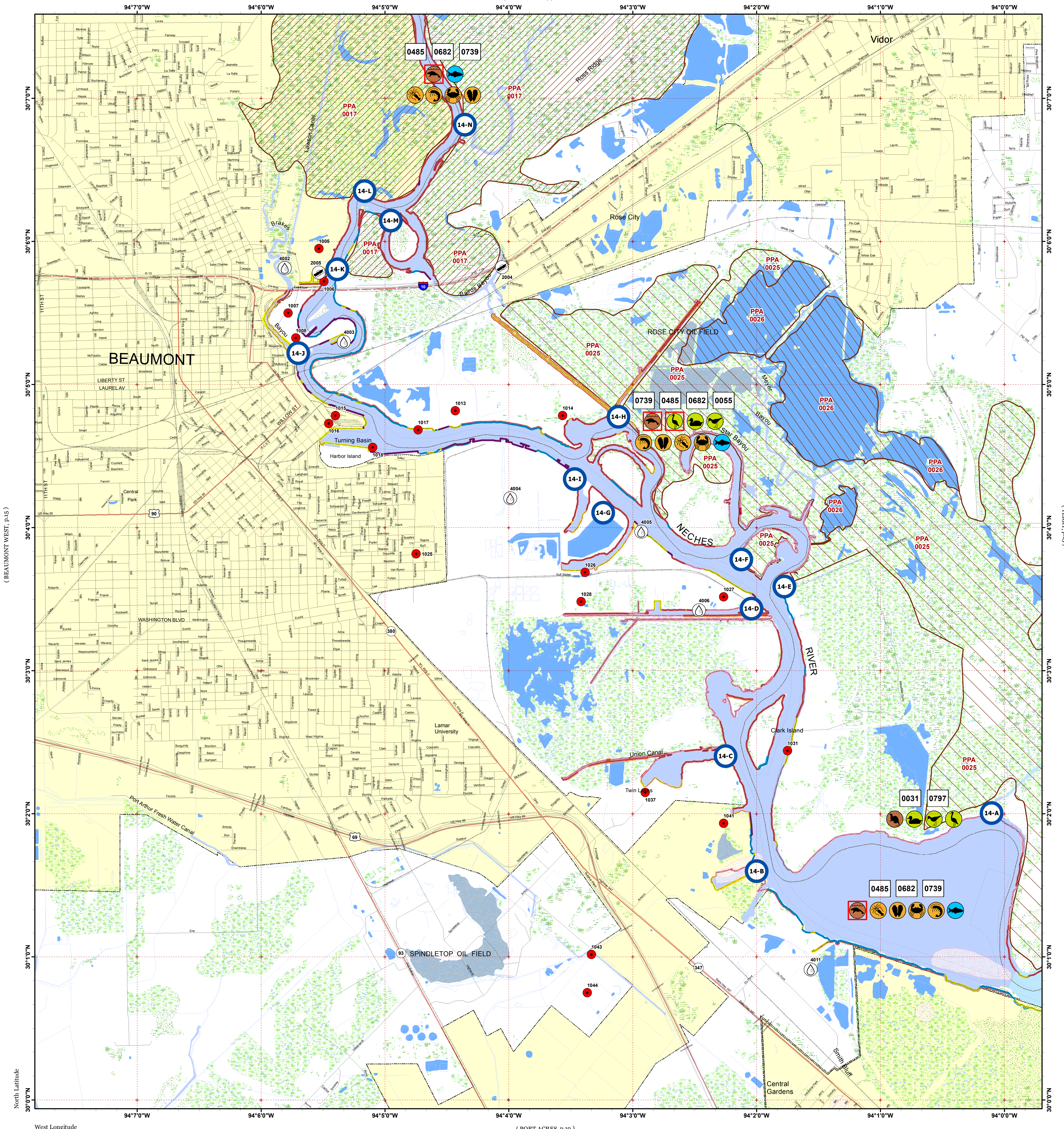


# BEAUMONT EAST

(PINE FOREST, p.9)

Click Here or Scroll Down for Associated Map Data

Click on the Geographic Response Plan Target to View the ICS Form



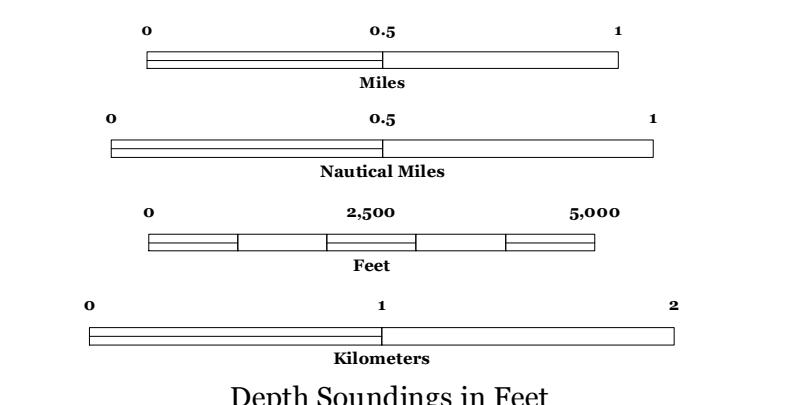
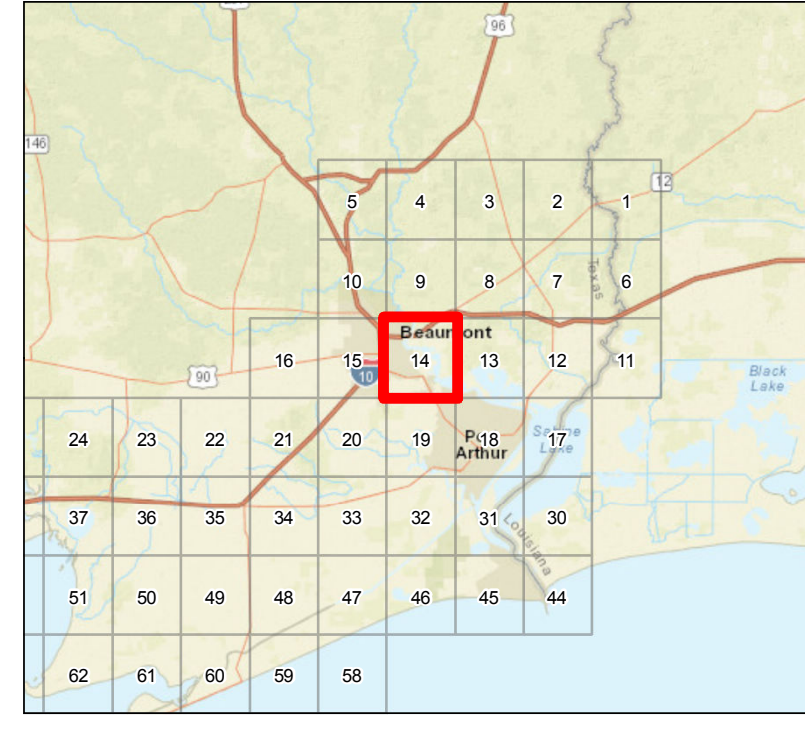
West Longitude

(PORT ACRES, p.19)



Oil Spill Planning and Response Atlas 2016

The Texas General Land Office makes no representations or warranties regarding the accuracy or completeness of the information depicted on this map or the data from which it was produced. This map is not suitable for navigational purposes and does not purport to depict boundaries of private and public land.



### Human Use Features

- Boat Ramp
- Facility
- Water Intake
- Geographic Response Plan

### Map Base Layers

- Interstate Highway
- State Highway
- US Highway
- Railroads
- Road
- GIWW
- Exposed Lake Shore
- Freshwater Marshes
- Swamps and Flooded Woodlands
- Willow Thickets
- Lake / Pond
- Perennial River
- Intermittent River
- County Boundary
- City Limits

### Priority Protection Areas

- HIGH
- MEDIUM
- LOW

### Species Icons Within Map Quad

- Benthic Marine
- Small Mammal
- Shorebird
- Wading
- Wading Endangered
- Waterfowl
- Mammal T/E

### ENVIRONMENTAL SENSITIVITY INDEX

- 10D Mangroves and Woody Vegetation
- 10C Freshwater Swamps
- 10B Freshwater Marshes
- 10A Salt and Brackish Water Marshes
- 9 Sheltered Tidal Flats
- 8C Sheltered Rocky/Karst Shores
- 8D Sheltered Scarps
- 8B Sheltered Riprap Structures
- 8A Sheltered Solid Manmade Structures
- 7 Exposed Tidal Flats
- 6B Exposed Riprap Structures
- 6A Gravel or Shell Beaches
- 5 Mixed Sand and Gravel or Shell Beaches
- 4 Coarse-Grained Sand Beaches
- 3B Scraps and Steep Slopes in Sand
- 3A Fine-Grained Sand Beaches
- 2B Wave-Cut Clay Platforms
- 2A Scraps and Steep Slopes in Clay
- 1 Exposed Walls and Other Solid Structures



# Quadrant: BEAUMONT EAST

Map # :14

Biological Information for this quadrant represents known concentration areas of occurrence.

## Habitat Priority Protection Areas

| PPA ID  | PRIORITY | POLY DESCRIPTION                         | BIRDS RANK | BIRDS DESCRIPTION                  | FISH RANK | FISH DESCRIPTION   | WETLANDS RANK | WETLANDS DESCRIPTION  |
|---------|----------|--|------------|------------------------------------|-----------|--|---------------|---|
| PPA0017 | HIGH     | Cypress-tupelo stands along Neches River |            |                                    |           |  | HIGH          | Cypress swamps  |
| PPA0025 | LOW      | Rose City marsh and adjacent marshes     |            | Wading birds, waterfowl, osprey    |           |  | HIGH          | Fresh marsh (California bulrush, cattails, arrowheads), some cypress stands |
| PPA0026 | MEDIUM   | Open water of Rose City marsh            | LOW        | Wading birds, waterfowl and osprey | MEDIUM    | Freshwater (bass, catfish, gar, shad) and saltwater (red drum, flounder) species | MEDIUM        | Cypress stands in open water  |

## Biological Resources

### Bird

| RARNUM | NAME               | S | F | T | E | CONC | J | F | M | A | M | J | J | A | S | O | N | D | Nesting | Migrating | Molting |
|--------|--------------------|---|---|---|---|------|---|---|---|---|---|---|---|---|---|---|---|---|---------|-----------|---------|
| 0031   | Black-necked stilt |   |   |   |   | 10S  |   | X | X | X | X | X | X | X | X | X |   |   | -       | -         | -       |
|        | Dowitchers         |   |   |   |   | 100S | X | X | X | X | X |   |   | X | X | X | X | X | -       | JUL-MAY*  | -       |
|        | Dunlin             |   |   |   |   | 100S | X | X | X | X | X |   |   |   | X | X | X | X | -       | -         | -       |
|        | Killdeer           |   |   |   |   | 100S | X | X | X | X | X | X |   | X | X | X | X | X | -       | DEC-MAR   | -       |
|        | Shorebirds         |   |   |   |   | 100S | X | X | X | X | X |   |   | X | X | X | X | X | -       | -         | -       |
|        | Western sandpiper  |   |   |   |   | 100S | X | X | X | X | X | X |   | X | X | X | X | X | -       | JUL-MAY*  | -       |
|        | Willet             |   |   |   |   | 100S | X | X | X | X | X | X |   | X | X | X | X | X | -       | AUG-APR*  | -       |
|        | Yellowlegs         |   |   |   |   | 10S  | X | X | X | X | X |   |   | X | X | X | X | X | -       | JUL-MAY*  | -       |
|        | Marsh birds        |   |   |   |   | -    |   | X | X | X | X | X | X |   | X | X | X | X | -       | -         | -       |
|        | Wading birds       |   |   |   |   | -    |   | X | X | X | X | X | X |   | X | X | X | X | -       | -         | -       |
|        | Mottled duck       |   |   |   |   | -    |   | X | X | X | X | X | X |   | X | X | X | X | FEB-AUG | -         | JUN-AUG |
|        | Waterfowl          |   |   |   |   | -    |   | X | X | X | X | X | X |   | X | X | X | X | -       | -         | -       |
| 0055   | Shorebirds         |   |   |   |   | -    | X | X | X | X | X |   |   | X | X | X | X | X | -       | -         | -       |
|        | Marsh birds        |   |   |   |   | -    | X | X | X | X | X | X |   | X | X | X | X | X | -       | -         | -       |
|        | Wading birds       |   |   |   |   | -    | X | X | X | X | X | X |   | X | X | X | X | X | -       | -         | -       |
|        | Wood stork         | S |   | T |   | -    |   |   |   |   |   | X | X | X | X | X |   |   | -       | -         | -       |
|        | Waterfowl          |   |   |   |   | -    | X | X | X | X | X | X |   | X | X | X | X | X | -       | -         | -       |

### Fish

| RARNUM | NAME                | S | F | T | E | CONC            | J | F | M | A | M | J | J | A | S | O | N | D | Spawning | Eggs    | Larvae  | Juveniles | Adults  |         |
|--------|---------------------|---|---|---|---|-----------------|---|---|---|---|---|---|---|---|---|---|---|---|----------|---------|---------|-----------|---------|---------|
| 0485   | Gizzard shad        |   |   |   |   | ABUNDANT        | X | X | X | X | X | X | X | X | X | X | X | X | -        | -       | -       | -         | JAN-DEC |         |
|        | Atlantic croaker    |   |   |   |   | HIGHLY-ABUNDANT | X | X | X | X | X | X | X | X | X | X | X | X | -        | -       | JAN-JUN | JAN-DEC   | JAN-DEC |         |
|        | Bay anchovy         |   |   |   |   | COMMON          | X | X | X | X | X | X | X | X | X | X | X | X | MAR-NOV  | MAR-NOV | MAR-NOV | JAN-DEC   | JAN-DEC |         |
|        | Black drum          |   |   |   |   | COMMON          | X | X | X | X | X | X | X | X | X | X | X | X | -        | -       | -       | JAN-DEC   | JAN-DEC |         |
|        | Bull shark          |   |   |   |   | RARE            | X | X | X | X | X | X | X | X | X | X | X | X | X        | -       | MAY-AUG | MAY-AUG   | APR-NOV | JAN-DEC |
|        | Gafftopsail catfish |   |   |   |   | ABUNDANT        |   |   |   | X | X | X | X | X | X | X |   |   |          | APR-MAY | -       | -         | APR-OCT | APR-OCT |
|        | Gulf menhaden       |   |   |   |   | ABUNDANT        | X | X | X | X | X | X | X | X | X | X | X | X | X        | -       | -       | -         | JAN-DEC | APR-DEC |
|        | Hardhead catfish    |   |   |   |   | ABUNDANT        | X | X | X | X | X | X | X | X | X | X | X | X | X        | MAY-AUG | MAY-SEP | MAY-SEP   | JUN-SEP | JAN-DEC |
|        | Pinfish             |   |   |   |   | RARE            |   |   |   | X | X | X | X | X | X | X |   |   |          | -       | -       | -         | APR-OCT | APR-OCT |
|        | Red drum            |   |   |   |   | COMMON          | X | X | X | X | X | X | X | X | X | X | X | X | X        | -       | -       | -         | JAN-DEC | JAN-DEC |
|        | Sand seatrout       |   |   |   |   | COMMON          | X | X | X | X | X | X | X | X | X | X | X | X | X        | -       | -       | -         | JAN-DEC | JAN-DEC |
|        | Sheepshead          |   |   |   |   | COMMON          | X | X | X | X | X | X | X | X | X | X | X | X | X        | -       | -       | -         | DEC-FEB | JAN-DEC |
|        | Southern flounder   |   |   |   |   | COMMON          | X | X | X | X | X | X | X | X | X | X | X | X | X        | -       | -       | -         | JAN-DEC | JAN-DEC |
|        | Spot                |   |   |   |   | HIGHLY-ABUNDANT |   | X | X | X | X | X | X | X | X | X | X | X | X        | -       | -       | -         | MAR-OCT | MAR-NOV |
|        | Spotted seatrout    |   |   |   |   | COMMON          | X | X | X | X | X | X | X | X | X | X | X | X | X        | APR-OCT | APR-OCT | APR-OCT   | OCT-NOV | JAN-DEC |
|        | Star drum           |   |   |   |   | -               | X | X | X | X | X | X | X | X | X | X | X | X | X        | -       | -       | -         | -       | -       |
|        | Striped mullet      |   |   |   |   | COMMON          | X | X | X | X | X | X | X | X | X | X | X | X | X        | -       | -       | -         | JAN-DEC | JAN-DEC |
|        | Tarpon              |   |   |   |   | RARE            |   | X | X | X | X | X | X | X | X | X |   |   |          | -       | -       | -         | MAR-NOV | -       |
|        | White mullet        |   |   |   |   | COMMON          |   |   |   |   | X | X | X | X |   |   |   |   |          | -       | -       | -         | JUN-SEP | -       |
|        | Gulf killifish      |   |   |   |   | COMMON          | X | X | X | X | X | X | X | X | X | X | X | X | X        | MAR-SEP | MAR-SEP | MAR-OCT   | JAN-DEC | JAN-DEC |
|        | Silver perch        |   |   |   |   | RARE            | X | X | X | X | X | X | X | X | X | X | X | X | X        | MAY-SEP | MAY-SEP | MAY-SEP   | OCT-NOV | JAN-DEC |
|        | Silversides         |   |   |   |   | COMMON          | X | X | X | X | X | X | X | X | X | X | X | X | X        | MAR-AUG | MAR-AUG | MAR-AUG   | JAN-DEC | JAN-DEC |
|        | Alligator gar       |   |   |   |   | COMMON          | X | X | X | X | X | X | X | X | X | X | X | X | X        | -       | -       | -         | JAN-DEC | JAN-DEC |
|        | Spotted gar         |   |   |   |   | ABUNDANT        | X | X | X | X | X | X | X | X | X | X | X | X | X        | APR-MAY | APR-MAY | -         | JAN-DEC | JAN-DEC |
|        | Atlantic spadefish  |   |   |   |   | RARE            |   |   |   |   |   | X | X | X | X |   |   |   |          | -       | -       | -         | JUL-OCT | -       |
|        | Bay whiff           |   |   |   |   | RARE            | X | X | X | X | X | X | X | X | X | X | X | X | X        | -       | -       | -         | JUL-AUG | JAN-DEC |
|        | Spotfin mojarra     |   |   |   |   | RARE            |   |   |   |   |   |   | X | X |   |   |   |   |          | -       | -       | -         | -       | -       |
|        | Atlantic bumper     |   |   |   |   | RARE            |   |   |   |   |   | X | X |   |   |   |   |   |          | -       | -       | -         | -       | AUG-SEP |
|        | Crevalle jack       |   |   |   |   | COMMON          |   |   |   |   | X | X | X |   |   |   |   |   |          | -       | -       | -         | JUN-AUG | -       |
|        | Spanish mackerel    |   |   |   |   | COMMON          |   |   |   |   |   |   | X | X |   |   |   |   |          | -       | -       | -         | SEP-OCT | SEP-OCT |

### Invertebrate

| RARNUM | NAME            | S | F | T | E | CONC            | J | F | M | A | M | J | J | A | S | O | N | D | Spawning | Eggs    | Larvae  | Juveniles | Adults  |
|--------|-----------------|---|---|---|---|-----------------|---|---|---|---|---|---|---|---|---|---|---|---|----------|---------|---------|-----------|---------|
| 0682   | Atlantic rangia |   |   |   |   | ABUNDANT        | X | X | X | X | X | X | X | X | X | X | X | X | MAR-OCT  | -       | MAR-OCT | JAN-DEC   | JAN-DEC |
|        | Blue crab       |   |   |   |   | ABUNDANT        | X | X | X | X | X | X | X | X | X | X | X | X | MAR-NOV  | -       | MAR-NOV | JAN-DEC   | JAN-DEC |
|        | Brown shrimp    |   |   |   |   | ABUNDANT        |   | X | X | X | X | X | X | X | X | X | X | X | -        | -       | MAR-APR | APR-DEC   | -       |
|        | Grass shrimp    |   |   |   |   | COMMON          | X | X | X | X | X | X | X | X | X | X | X | X | JAN-DEC  | JAN-DEC | JAN-DEC | JAN-DEC   | JAN-DEC |
|        | White shrimp    |   |   |   |   | HIGHLY-ABUNDANT | X | X | X | X | X | X | X | X | X | X | X | X | X        | -       | -       | MAY-JUN   | APR-DEC |

### Marine Mammal

| RARNUM | NAME                | S   | F | T   | E | CONC      | J | F | M | A | M | J | J | A | S | O | N | D | Mating | Calving | Pupping | Molting |
|--------|---------------------|-----|---|-----|---|-----------|---|---|---|---|---|---|---|---|---|---|---|---|--------|---------|---------|---------|
| 0739   | West Indian manatee | S/F |   | E/E |   | VERY-RARE |   |   |   |   |   | X | X | X |   |   |   |   | -      | -       | -       | -       |

# Terrestrial Mammal

| RARNUM | NAME                 | S F | T E | CONC | J | F | M | A | M | J | J | A | S | O | N | D | Nesting |
|--------|----------------------|-----|-----|------|---|---|---|---|---|---|---|---|---|---|---|---|---------|
| 0797   | Northern river otter |     |     | -    | X | X | X | X | X | X | X | X | X | X | X | X | N/A     |

## Human Use Resources

| Boat Ramp    | RARNUM | NAME   | CONTACT         | CONTACT INFO              |
|--------------|--------|--|-----------------|---------------------------|
|              | 2004   | Freeway Boulevard  |                 |                           |
|              | 2005   | Beaumont Yacht Club  |                 | jeffersonneches@yachtclub |
| Facility     | RARNUM | NAME   | CONTACT         | CONTACT INFO              |
|              | 1005   | Beaumont Emergency Services Training Complex (BEST)              | Chris Lamson    | 409-718-6513              |
|              | 1006   | Beaumont Yacht Club, Inc.  | Paul Morgan     | (409) 433-2055            |
|              | 1007   | APAC Pine Street Asphalt Facility                                | Mike Rowell     | 409-284-3632              |
|              | 1008   | Island Park Fabrication Plant                                    | Lee Gros        | 409-833-7091              |
|              | 1013   | Gerdau Ameristeel Beaumont                                       | Dean Peery      | 409-768-1211              |
|              | 1014   | ExxonMobil Oil Corporation Beaumont Chemical Plant               | Robert Johnston | 409-757-3367              |
|              | 1015   | P. C. Pfeiffer Co, Inc.  | Jim Flanagan    | 409-781-9058              |
|              | 1016   | Port of Beaumont Navigational District of Jefferson County Texas | Bill Carpenter  | 409-832-1546              |
|              | 1017   | Jefferson Railport Terminal 1 (Texas), LLC                       | Jay Whiteman    | 409-783-9191              |
|              | 1018   | Jefferson County Sheriff's Office                                | Ron Hobbs       | 409-832-1546              |
|              | 1025   | ExxonMobil Oil Corp-Beaumont Refinery                            | Gerald Frey     | (409) 833-9411            |
|              | 1026   | Sabine Ship Services, Inc  | Mark Lacouture  | 409-833-9288              |
|              | 1027   | Martin Operating Partnership, LP (Neches Terminal)               | Joel Herrington | 800-421-4738              |
|              | 1028   | Arkema, Inc.   | Didier Auber    | 409-951-5230              |
|              | 1031   | Beaumont Marine Terminal   | Steve Bowlin    | 800-530-1050              |
|              | 1037   | Martin Operating Partnership, LLC (Stanolind Facility)           | James Aflord    | 800-421-4738              |
|              | 1041   | Enterprise Beaumont Marine West                                  | Brent Campbell  | 409-225-9177              |
|              | 1043   | Marathon Pipeline-Bmt (centennial) Station                       | John Hunt       | 800-537-6644              |
|              | 1044   | Enterprises Beaumont Area Pipelines                              | Steve Bowlin    | 800-530-1050              |
| Water Intake | RARNUM | NAME   | CONTACT         | CONTACT INFO              |
|              | 4002   |  |                 |                           |
|              | 4003   | TRINITY INDUSTRIES INC.  |                 |                           |
|              | 4004   | MOBIL OIL CORP.  |                 |                           |
|              | 4005   | GULF STATES UTILITIES  |                 |                           |
|              | 4006   | PD GLYCOL LIMITED PARTNERSHIP                                    |                 |                           |
|              | 4011   | LUCITE BEAUMONT SITE   |                 |                           |

|                  |                                   |                            |
|------------------|-----------------------------------|----------------------------|
| 1. Incident Name | 2. Operational Period (Date/Time) | Assignment List ICS 204-OS |
|------------------|-----------------------------------|----------------------------|

|           |                   |
|-----------|-------------------|
| 3. Branch | 4. Division/Group |
|-----------|-------------------|

|                           |       |
|---------------------------|-------|
| 5. Operations Personnel   |       |
| Operations Section Chief  | _____ |
| Branch Director           | _____ |
| Division/Group Supervisor | _____ |

| 6. Resources Assigned This Period |        |                |              |                              |  | "X" Indicates 204a attachment with special instructions |
|-----------------------------------|--------|----------------|--------------|------------------------------|--|---|
| Resource Identifier               | Leader | Contact Info # | # of Persons | Reporting Info/Notes/Remarks |  |   |
|                                   |        |                |              |                              |  |   |
|                                   |        |                |              |                              |  |   |
|                                   |        |                |              |                              |  |   |
|                                   |        |                |              |                              |  |   |
|                                   |        |                |              |                              |  |   |
|                                   |        |                |              |                              |  |   |

|                |
|----------------|
| 7. Assignments |
|----------------|

**SAFETY NOTE:** All personnel need to contact the MARAD office before entering the site, shallow, reptiles in area

|                         |                               |                           |                            |                      |
|-------------------------|-------------------------------|---------------------------|----------------------------|----------------------|
| 8. Site Number:<br>14-A | 9. Quad Name<br>Beaumont East | 10. NOAA Chart #<br>11343 | 11. GLO Atlas Page #<br>14 | 12. County<br>Orange |
|-------------------------|-------------------------------|---------------------------|----------------------------|----------------------|

|   |  |     |  |
|---|--|-----|--|
| 13. Site Information: <b>14-A</b><br>Site 14-A is Anderson Gully, which is located approximately 5 miles North of Port Neches Park on the East bank of the Neches River. This site is located on the Northeast bank of the US Dept. of Transportation MARAD/Beaumont Reserve Fleet Anchorage. This Anchorage is secure and any personnel entering should contact the MARAD office first. There is road access to Anderson Gully by traveling IH10 to FM 105 West in Vidor. FM 105 crosses Anderson Gully approximately 3/4 of a mile East of Mansfield Ferry Rd. There is a tidal wash over located 1/2 mile East of Anderson Gully. A green PVC pipe identifies this wash over. Economic Contacts: MARAD Fleet 409-722-3433. | 14. Latitude From:<br><b>N 30°01'58.44"</b>  | To: |  |
|   | 15. Longitude From:<br><b>W 94°00'05.02"</b> | To: |  |

|   |                                |                                   |
|---|--------------------------------|-----------------------------------|
| 16. Closest Boat Ramp<br>Port Neches Park | 17. Distance From Ramp<br>5 mi | 18. Boat Type<br>Flat Bottom Boat |
|---|--------------------------------|-----------------------------------|

|  |   |
|--|---|
| 19. Directions From Local Sector<br>Directions From MSU Port Arthur: To reach Port Neches Park you would take Hwy 365 toward Port Neches. Take a Right on Hwy 366 and continue down to the first red light, which is Merriman. Take a Left on Merriman. Travel past Port Neches High School. The park is located at the end of Merriman. | 20. Closest Airport<br>Jefferson County Airport   |
|  | 21. Closest Helo Spot<br>Jefferson County Airport |

|   |   |                                     |
|---|---|-------------------------------------|
| 22. Trustee/Contact Numbers                   | 23. Resources at Risk   | 24. Width of inlet 80 ft.<br>in ft. |
| USCG: (409) 723-6509 RRC: (713)869-5001       | Atlas Priority  | 25. Water depth in ft. 2-3 ft.      |
| USCG DUTY: (409) 719-1597 TPWD: (409)892-8666 | Environmental Brackish marsh habitat for threatened osprey, river otter, wading birds, shore birds. | 26. Current Medium                  |
| TGLO: (800) 832-8224 NRDA: (512) 463 -9309    | Economic MARAD Fleet and Agriculture  | 27. No. of Personnel 4              |
| TCEQ: (409)781-9330 USFWS: (281) 286-8282     |   |                                     |

|  |
|--|
| 25. Booming Strategy Recommendation<br>Boom should be configured in an exclusion pattern as to prevent oil from entering cuts. Bring sufficient anchors and rope to accomplish task. |
|--|



|                  |                                       |                        |
|------------------|---------------------------------------|------------------------|
| 29. Prepared By: | 30. Reviewed by (PSC)                 | 31. Reviewed by (OSC): |
| Assignment List  | ICS 204 OS (Geographic Response Plan) | Project Updated:       |

"Response strategies may need to be modified to account for changes due to seasonality, weather conditions, spill characteristics, tides and any other considerations."

|                  |                                   |                            |
|------------------|-----------------------------------|----------------------------|
| 1. Incident Name | 2. Operational Period (Date/Time) | Assignment List ICS 204-OS |
|------------------|-----------------------------------|----------------------------|

|           |                   |
|-----------|-------------------|
| 3. Branch | 4. Division/Group |
|-----------|-------------------|

|                           |       |
|---------------------------|-------|
| 5. Operations Personnel   |       |
| Operations Section Chief  | _____ |
| Branch Director           | _____ |
| Division/Group Supervisor | _____ |

6. Resources Assigned This Period "X" Indicates 204a attachment with special instructions

| Resource Identifier | Leader | Contact Info # | # of Persons | Reporting Info/Notes/Remarks |
|---------------------|--------|----------------|--------------|------------------------------|
|                     |        |                |              |                              |
|                     |        |                |              |                              |
|                     |        |                |              |                              |
|                     |        |                |              |                              |
|                     |        |                |              |                              |
|                     |        |                |              |                              |

|                |
|----------------|
| 7. Assignments |
|----------------|

**SAFETY NOTE:** All personnel need to contact the MARAD office before entering the site.

|                         |                               |                           |                            |                         |
|-------------------------|-------------------------------|---------------------------|----------------------------|-------------------------|
| 8. Site Number:<br>14-B | 9. Quad Name<br>Beaumont East | 10. NOAA Chart #<br>11343 | 11. GLO Atlas Page #<br>14 | 12. County<br>Jefferson |
|-------------------------|-------------------------------|---------------------------|----------------------------|-------------------------|

|  |   |     |  |
|--|---|-----|--|
| 13. Site Information: <b>14-B</b><br>Site 14-B is the US Dept. of Transportation MARAD/Beaumont Reserve Fleet Office Boat Slip and Oiltanking Beaumont Barge dock facilities and a small inlet just south of the main inlet. These two inlets are located on the West bank of the Neches River approximately 3.75 miles South of the GSU Channel Ramp. The southern inlet leads to a small marsh area located just South of the US Dept. of Transportation MARAD/Beaumont Reserve Fleet Office. Economic Contacts: MARAD Fleet 409-722-3433. | 14. Latitude From:<br><b>N 30°01'31"</b>  | To: |  |
|  | 15. Longitude From:<br><b>W 94°01'56"</b> | To: |  |

|   |                                   |                                   |
|---|-----------------------------------|-----------------------------------|
| 16. Closest Boat Ramp<br>GSU Channel Ramp | 17. Distance From Ramp<br>3.75 mi | 18. Boat Type<br>Flat Bottom Boat |
|---|-----------------------------------|-----------------------------------|

|  |   |
|--|---|
| 19. Directions From Local Sector<br>To reach the GSU Canal boat launch you would take Hwy 69/96 North to MLK Pkwy exit. Take MLK Pkwy North towards IH10. Turn Left on Washington and then turn Right onto Irving. Turn Right on Madison and travel to the first stop sign, which is Sycamore, and turn Right. You will pass over one set of railroad tracks. The road will make a 90-degree turn to the Left. Follow this road almost to the Old GSU Plant. | 20. Closest Airport<br>Jefferson County Airport   |
|  | 21. Closest Helo Spot<br>Jefferson County Airport |

|  |   |  |
|--|---|--|
| 22. Trustee/Contact Numbers<br>USCG: (409) 723-6509    RRC: (713)869-5001<br>USCG DUTY: (409) 719-1597    TPWD: (409)892-8666<br>TGLO: (800) 832-8224    NRDA: (512) 463 -9309<br>TCEQ: (409)781-9330    USFWS: (281) 286-8282 | 23. Resources at Risk<br>Atlas Priority<br><br>Environmental    Small brackish marsh habitat<br><br>Economic    MARAD Fleet, Commercial | 24. Width of inlet    400 ft. in ft.<br>25. Water depth in ft.    12 ft.<br>26. Current    Medium<br>27. No. of Personnel    4 |
|--|---|--|

|  |
|--|
| 25. Booming Strategy Recommendation<br>Boom should be configured in an exclusion and or deflection pattern as to prevent oil from entering cuts. Bring sufficient anchors and rope to accomplish task. |
|--|

AERIAL PHOTO

ON SITE PHOTO



|                  |                                       |                        |
|------------------|---------------------------------------|------------------------|
| 29. Prepared By: | 30. Reviewed by (PSC)                 | 31. Reviewed by (OSC): |
| Assignment List  | ICS 204 OS (Geographic Response Plan) | Project Updated:       |

"Response strategies may need to be modified to account for changes due to seasonality, weather conditions, spill characteristics, tides and any other considerations."

|                  |                                   |                            |
|------------------|-----------------------------------|----------------------------|
| 1. Incident Name | 2. Operational Period (Date/Time) | Assignment List ICS 204-OS |
|------------------|-----------------------------------|----------------------------|

|           |                   |
|-----------|-------------------|
| 3. Branch | 4. Division/Group |
|-----------|-------------------|

|                           |       |
|---------------------------|-------|
| 5. Operations Personnel   |       |
| Operations Section Chief  | _____ |
| Branch Director           | _____ |
| Division/Group Supervisor | _____ |

6. Resources Assigned This Period "X" Indicates 204a attachment with special instructions

| Resource Identifier | Leader | Contact Info # | # of Persons | Reporting Info/Notes/Remarks |
|---------------------|--------|----------------|--------------|------------------------------|
|                     |        |                |              |                              |
|                     |        |                |              |                              |
|                     |        |                |              |                              |
|                     |        |                |              |                              |
|                     |        |                |              |                              |
|                     |        |                |              |                              |

7. Assignments

**SAFETY NOTE:** Shallow with reptiles in area.

|                         |                               |                           |                            |                         |
|-------------------------|-------------------------------|---------------------------|----------------------------|-------------------------|
| 8. Site Number:<br>14-C | 9. Quad Name<br>Beaumont East | 10. NOAA Chart #<br>11343 | 11. GLO Atlas Page #<br>14 | 12. County<br>Jefferson |
|-------------------------|-------------------------------|---------------------------|----------------------------|-------------------------|

|  |  |     |  |
|--|--|-----|--|
| 13. Site Information: <b>14-C</b><br>Site 14-C is Union Canal , Twin Lakes and Martin Operating Partnership, LLC Standind facility. This site is located approximately 3 miles South of the <b>GSU Canal on the West bank of the Neches River. Union Canal's South bank consists of a very narrow strip of land that forms an island during low tides.</b> Economic Contacts: Martin Operating 800-421-4738. | 14. Latitude From:<br><b>N 30°02'24.70"</b>  | To: |  |
|  | 15. Longitude From:<br><b>W 94°02'12.37"</b> | To: |  |

|  |                                |                                   |
|--|--------------------------------|-----------------------------------|
| 16. Closest Boat Ramp<br>GSU Canal boat launch | 17. Distance From Ramp<br>3 mi | 18. Boat Type<br>Flat Bottom Boat |
|--|--------------------------------|-----------------------------------|

|  |   |
|--|---|
| 19. Directions From Local Sector<br>To reach the GSU Canal boat launch you would take Hwy 69/96 North to MLK Pkwy exit. Take MLK Pkwy North towards IH10. Turn Left on Washington and then turn Right onto Irving. Turn Right on Madison and travel to the first stop sign, which is Sycamore, and turn Right. You will pass over one set of railroad tracks. The road will make a 90-degree turn to the Left. Follow this road almost to the Old GSU Plant. | 20. Closest Airport<br>Jefferson County Airport   |
|  | 21. Closest Helo Spot<br>Jefferson County Airport |

|   |  |                                   |
|---|--|-----------------------------------|
| 22. Trustee/Contact Numbers                   | 23. Resources at Risk  | 24. Width of inlet 950 ft. in ft. |
| USCG: (409) 723-6509 RRC: (713)869-5001       | Atlas Priority   | 25. Water depth in ft. 25 ft.     |
| USCG DUTY: (409) 719-1597 TPWD: (409)892-8666 | Environmental Brackish water and marsh ecosystem in union Canal with wading birds. | 26. Current Medium                |
| TGLO: (800) 832-8224 NRDA: (512) 463 -9309    | Economic Commercial/Industrial   | 27. No. of Personnel 4            |
| TCEQ: (409)781-9330 USFWS: (281) 286-8282     |  |                                   |

25. Booming Strategy Recommendation  
Boom should be configured in an exclusion and or deflection pattern as to prevent oil from entering cuts. Bring sufficient anchors and rope to accomplish task.

AERIAL PHOTO

ON SITE PHOTO



|                  |                                       |                        |
|------------------|---------------------------------------|------------------------|
| 29. Prepared By: | 30. Reviewed by (PSC)                 | 31. Reviewed by (OSC): |
| Assignment List  | ICS 204 OS (Geographic Response Plan) | Project Updated:       |

"Response strategies may need to be modified to account for changes due to seasonality, weather conditions, spill characteristics, tides and any other considerations."



|                  |                                   |                            |
|------------------|-----------------------------------|----------------------------|
| 1. Incident Name | 2. Operational Period (Date/Time) | Assignment List ICS 204-OS |
|------------------|-----------------------------------|----------------------------|

|           |                   |
|-----------|-------------------|
| 3. Branch | 4. Division/Group |
|-----------|-------------------|

|                           |       |
|---------------------------|-------|
| 5. Operations Personnel   |       |
| Operations Section Chief  | _____ |
| Branch Director           | _____ |
| Division/Group Supervisor | _____ |

| 6. Resources Assigned This Period |        |                |              |                              |  | "X" Indicates 204a attachment with special instructions |
|-----------------------------------|--------|----------------|--------------|------------------------------|--|---|
| Resource Identifier               | Leader | Contact Info # | # of Persons | Reporting Info/Notes/Remarks |  |   |
|                                   |        |                |              |                              |  |   |
|                                   |        |                |              |                              |  |   |
|                                   |        |                |              |                              |  |   |
|                                   |        |                |              |                              |  |   |
|                                   |        |                |              |                              |  |   |
|                                   |        |                |              |                              |  |   |

|                |
|----------------|
| 7. Assignments |
|----------------|

**SAFETY NOTE:** Shallow with multiple pipeline crossings.

|                         |                               |                           |                            |                         |
|-------------------------|-------------------------------|---------------------------|----------------------------|-------------------------|
| 8. Site Number:<br>14-D | 9. Quad Name<br>Beaumont East | 10. NOAA Chart #<br>11343 | 11. GLO Atlas Page #<br>14 | 12. County<br>Jefferson |
|-------------------------|-------------------------------|---------------------------|----------------------------|-------------------------|

|   |  |  |     |
|---|--|--|-----|
| 13. Site Information: <b>14-D</b><br>Site 14-D is the Equistar Chemicals, LP Intake Canal. It is located on the West bank of the Neches River approximately 1.5 miles South of the GSU canal boat launch. This site consists of three inlets that merge to form one canal that is the intake point for PD Glycol. This canal feeds a small spoil bank area that is habitat for waterfowl and wading birds. Economic Contacts: Equistar Chemicals, LP 409-617-8980. Martin Operating 800-421-4738. |  | 14. Latitude From:<br><b>N 30°03'25.38"</b>  | To: |
|   |  | 15. Longitude From:<br><b>W 94°01'53.65"</b> | To: |

|  |                                  |                                   |
|--|----------------------------------|-----------------------------------|
| 16. Closest Boat Ramp<br>GSU Canal boat launch | 17. Distance From Ramp<br>1.5 mi | 18. Boat Type<br>Flat Bottom Boat |
|--|----------------------------------|-----------------------------------|

|  |   |
|--|---|
| 19. Directions From Local Sector<br>To reach the GSU Canal boat launch you would take Hwy 69/96 North to MLK Pkwy exit. Take MLK Pkwy North towards IH10. Turn Left on Washington and then turn Right onto Irving. Turn Right on Madison and travel to the first stop sign, which is Sycamore, and turn Right. You will pass over one set of railroad tracks. The road will make a 90-degree turn to the Left. Follow this road almost to the Old GSU Plant. | 20. Closest Airport<br>Jefferson County Airport   |
|  | 21. Closest Helo Spot<br>Jefferson County Airport |

|   |  |                                    |
|---|--|------------------------------------|
| 22. Trustee/Contact Numbers                   | 23. Resources at Risk  | 24. Width of inlet 1300 ft. in ft. |
| USCG: (409) 723-6509 RRC: (713)869-5001       | Atlas Priority   | 25. Water depth in ft. 12 ft.      |
| USCG DUTY: (409) 719-1597 TPWD: (409)892-8666 | Environmental Brackish water marsh ecosystem in canals with wading birds | 26. Current Medium                 |
| TGLO: (800) 832-8224 NRDA: (512) 463 -9309    | Economic Industrial  | 27. No. of Personnel 4             |
| TCEQ: (409)781-9330 USFWS: (281) 286-8282     |  |                                    |

|  |
|--|
| 25. Booming Strategy Recommendation<br>Boom should be configured in an exclusion and or deflection pattern as to prevent oil from entering cuts. Bring sufficient anchors and rope to accomplish task. |
|--|



|                  |                                       |                        |
|------------------|---------------------------------------|------------------------|
| 29. Prepared By: | 30. Reviewed by (PSC)                 | 31. Reviewed by (OSC): |
| Assignment List  | ICS 204 OS (Geographic Response Plan) | Project Updated:       |

"Response strategies may need to be modified to account for changes due to seasonality, weather conditions, spill characteristics, tides and any other considerations."

|                  |                                   |                            |
|------------------|-----------------------------------|----------------------------|
| 1. Incident Name | 2. Operational Period (Date/Time) | Assignment List ICS 204-OS |
|------------------|-----------------------------------|----------------------------|

|           |                   |
|-----------|-------------------|
| 3. Branch | 4. Division/Group |
|-----------|-------------------|

|                           |       |
|---------------------------|-------|
| 5. Operations Personnel   |       |
| Operations Section Chief  | _____ |
| Branch Director           | _____ |
| Division/Group Supervisor | _____ |

6. Resources Assigned This Period "X" Indicates 204a attachment with special instructions

| Resource Identifier | Leader | Contact Info # | # of Persons | Reporting Info/Notes/Remarks |
|---------------------|--------|----------------|--------------|------------------------------|
|                     |        |                |              |                              |
|                     |        |                |              |                              |
|                     |        |                |              |                              |
|                     |        |                |              |                              |
|                     |        |                |              |                              |
|                     |        |                |              |                              |

|                |
|----------------|
| 7. Assignments |
|----------------|

**SAFETY NOTE:** Shallow, reptiles in area.

|                         |                               |                           |                            |                      |
|-------------------------|-------------------------------|---------------------------|----------------------------|----------------------|
| 8. Site Number:<br>14-E | 9. Quad Name<br>Beaumont East | 10. NOAA Chart #<br>11343 | 11. GLO Atlas Page #<br>14 | 12. County<br>Orange |
|-------------------------|-------------------------------|---------------------------|----------------------------|----------------------|

|  |                                    |     |  |
|--|------------------------------------|-----|--|
| 13. Site Information: <b>14-E</b><br>Site 14-E is an unnamed inlet located on the East bank of the Neches River approximately 1.5 miles South of GSU canal boat launch. This inlet leads to a sensitive marsh Southeast of Rose City Oil Field. This inlet is directly across the Neches River from PD Glycol's intake canal (14-D). Economic Contacts: Martin Operating (800)-421-4738. | 14. Latitude From:<br>N 30°03'33"  | To: |  |
|  | 15. Longitude From:<br>W 94°01'48" | To: |  |

|  |                                  |                                   |
|--|----------------------------------|-----------------------------------|
| 16. Closest Boat Ramp<br>GSU Canal boat launch | 17. Distance From Ramp<br>1.5 mi | 18. Boat Type<br>Flat Bottom Boat |
|--|----------------------------------|-----------------------------------|

|   |   |   |
|---|---|---|
| 19. Directions From Local Sector<br>To reach the GSU Canal boat launch you would take Hwy 69/96 North to MLK Pkwy exit. Take MLK Pkwy North towards IH10. Turn Left on Washington and then turn Right onto Irving. Turn Right on Madison and travel to the first stop sign, which is Sycamore, and turn Right. You will pass over one set of railroad tracks. The road will make a 90-degree turn to the Left. Follow this road almost to the Old GSU Plant. The GSU Canal boat launch will be on the Left-hand side of the road. | 20. Closest Airport<br>Jefferson County | 21. Closest Helo Spot<br>Jefferson County |
|---|---|---|

|  |  |   |
|--|--|---|
| 22. Trustee/Contact Numbers<br>USCG: (409) 723-6509    RRC: (713)869-5001<br>USCG DUTY: (409) 719-1597    TPWD: (409)892-8666<br>TGLO: (800) 832-8224    NRDA: (512) 463 -9309<br>TCEQ: (409)781-9330    USFWS: (281) 286-8282 | 23. Resources at Risk<br>Atlas Priority<br><br>Environmental    Brackish marsh habitat for threatened osprey, river otter, wading birds, shore birds.<br><br>Economic    Commercial/Industrial | 24. Width of inlet    160 ft. in ft.<br>25. Water depth in ft.    5 ft.<br>26. Current    Medium<br>27. No. of Personnel    4 |
|--|--|---|

|  |
|--|
| 25. Booming Strategy Recommendation<br>Boom should be configured in an exclusion pattern as to prevent oil from entering cuts. Bring sufficient anchors and rope to accomplish task. |
|--|



|                  |                                       |                        |
|------------------|---------------------------------------|------------------------|
| 29. Prepared By: | 30. Reviewed by (PSC)                 | 31. Reviewed by (OSC): |
| Assignment List  | ICS 204 OS (Geographic Response Plan) | Project Updated:       |

"Response strategies may need to be modified to account for changes due to seasonality, weather conditions, spill characteristics, tides and any other considerations."



|                  |                                   |                            |
|------------------|-----------------------------------|----------------------------|
| 1. Incident Name | 2. Operational Period (Date/Time) | Assignment List ICS 204-OS |
|------------------|-----------------------------------|----------------------------|

|           |                   |
|-----------|-------------------|
| 3. Branch | 4. Division/Group |
|-----------|-------------------|

|                           |       |
|---------------------------|-------|
| 5. Operations Personnel   |       |
| Operations Section Chief  | _____ |
| Branch Director           | _____ |
| Division/Group Supervisor | _____ |

6. Resources Assigned This Period "X" Indicates 204a attachment with special instructions

| Resource Identifier | Leader | Contact Info # | # of Persons | Reporting Info/Notes/Remarks |
|---------------------|--------|----------------|--------------|------------------------------|
|                     |        |                |              |                              |
|                     |        |                |              |                              |
|                     |        |                |              |                              |
|                     |        |                |              |                              |
|                     |        |                |              |                              |
|                     |        |                |              |                              |

7. Assignments

**SAFETY NOTE:** Shallow with stumps and reptiles

|                         |                               |                           |                            |                      |
|-------------------------|-------------------------------|---------------------------|----------------------------|----------------------|
| 8. Site Number:<br>14-F | 9. Quad Name<br>Beaumont East | 10. NOAA Chart #<br>11343 | 11. GLO Atlas Page #<br>14 | 12. County<br>Orange |
|-------------------------|-------------------------------|---------------------------|----------------------------|----------------------|

|  |   |     |  |   |     |
|--|---|-----|--|---|-----|
| 13. Site Information: <b>14-F</b><br>Site 14-F is a series of six inlets located within an oxbow/anchorage on the East bank of the Neches River. Star Bayou and Meyer Bayou are the major inlets of this site. This oxbow/anchorage is located approximately 5.5 miles South of IH10. The inlets off of this oxbow/anchorage are wide with fresh/brackish marsh shores and lead to the sensitive Rose City Marsh. <b>Martin Operating (800)-421-4738</b> | 14. Latitude From:<br><b>N 30°03'42.46"</b> | To: |  | 15. Longitude From:<br><b>W 94°02'4.57"</b> | To: |
|--|---|-----|--|---|-----|

|  |                                   |                                   |
|--|-----------------------------------|-----------------------------------|
| 16. Closest Boat Ramp<br>GSU canal boat launch | 17. Distance From Ramp<br>1.25 mi | 18. Boat Type<br>Flat Bottom Boat |
|--|-----------------------------------|-----------------------------------|

|   |   |   |
|---|---|---|
| 19. Directions From Local Sector<br>To reach the GSU Canal boat launch you would take Hwy 69/96 North to MLK Pkwy exit. Take MLK Pkwy North towards IH10. Turn Left on Washington and then turn Right onto Irving. Turn Right on Madison and travel to the first stop sign, which is Sycamore, and turn Right. You will pass over one set of railroad tracks. The road will make a 90-degree turn to the Left. Follow this road almost to the Old GSU Plant. The GSU Canal boat launch will be on the Left-hand side of the road. | 20. Closest Airport<br>Jefferson County | 21. Closest Helo Spot<br>Jefferson County |
|---|---|---|

|  |  |  |
|--|--|--|
| 22. Trustee/Contact Numbers<br>USCG: (409) 723-6509    RRC: (713)869-5001<br>USCG DUTY: (409) 719-1597    TPWD: (409)892-8666<br>TGLO: (800) 832-8224    NRDA: (512) 463 -9309<br>TCEQ: (409)781-9330    USFWS: (281) 286-8282 | 23. Resources at Risk<br>Atlas Priority<br><br>Environmental    Brackish marsh habitat for threatened osprey, river otter, wading birds, shore birds.<br><br>Economic    N/A | 24. Width of inlet Starting north clockwise: 690', 560', 790', 270', 160', 50', 60' and in ft.<br>25. Water depth in ft. 7 ft.<br>26. Current Medium<br>27. No. of Personnel 4 |
|--|--|--|

25. Booming Strategy Recommendation  
 Boom should be configured in an exclusion and or deflection pattern as to prevent oil from entering cuts. Bring sufficient anchors and rope to accomplish task.

AERIAL PHOTO



ON SITE PHOTO

|                  |                       |                        |
|------------------|-----------------------|------------------------|
| 29. Prepared By: | 30. Reviewed by (PSC) | 31. Reviewed by (OSC): |
|------------------|-----------------------|------------------------|

|                 |                                       |                  |
|-----------------|---------------------------------------|------------------|
| Assignment List | ICS 204 OS (Geographic Response Plan) | Project Updated: |
|-----------------|---------------------------------------|------------------|

"Response strategies may need to be modified to account for changes due to seasonality, weather conditions, spill characteristics, tides and any other considerations."



|                  |                                   |                            |
|------------------|-----------------------------------|----------------------------|
| 1. Incident Name | 2. Operational Period (Date/Time) | Assignment List ICS 204-OS |
|------------------|-----------------------------------|----------------------------|

|           |                   |
|-----------|-------------------|
| 3. Branch | 4. Division/Group |
|-----------|-------------------|

|                           |       |
|---------------------------|-------|
| 5. Operations Personnel   |       |
| Operations Section Chief  | _____ |
| Branch Director           | _____ |
| Division/Group Supervisor | _____ |

6. Resources Assigned This Period "X" Indicates 204a attachment with special instructions

| Resource Identifier | Leader | Contact Info # | # of Persons | Reporting Info/Notes/Remarks |
|---------------------|--------|----------------|--------------|------------------------------|
|                     |        |                |              |                              |
|                     |        |                |              |                              |
|                     |        |                |              |                              |
|                     |        |                |              |                              |
|                     |        |                |              |                              |
|                     |        |                |              |                              |

|                |
|----------------|
| 7. Assignments |
|----------------|

**SAFETY NOTE:** Shallow along banks

|                         |                               |                           |                            |                         |
|-------------------------|-------------------------------|---------------------------|----------------------------|-------------------------|
| 8. Site Number:<br>14-G | 9. Quad Name<br>Beaumont East | 10. NOAA Chart #<br>11343 | 11. GLO Atlas Page #<br>14 | 12. County<br>Jefferson |
|-------------------------|-------------------------------|---------------------------|----------------------------|-------------------------|

|   |  |  |     |
|---|--|--|-----|
| 13. Site Information: <b>14-G</b><br>Site 14-G is the Old GSU Power Plant Canal located on the West bank of the Neches River. This canal is located approximately 4.5 miles South of IH10. There is a small boat launch located on this canal. The banks consist of steep bulkhead and a few low wooded areas. Economic Contacts: Sabine ship Services, Inc (409) 833-9288. Arkema Delaware, Inc. (409) 951-5230. |  | 14. Latitude From:<br><b>N 30°04'03.13"</b>  | To: |
|   |  | 15. Longitude From:<br><b>W 94°03'00.61"</b> | To: |

|  |                                   |                                   |
|--|-----------------------------------|-----------------------------------|
| 16. Closest Boat Ramp<br>GSU Canal boat launch | 17. Distance From Ramp<br>On site | 18. Boat Type<br>Flat Bottom Boat |
|--|-----------------------------------|-----------------------------------|

|   |   |
|---|---|
| 19. Directions From Local Sector<br>To reach the GSU Canal boat launch you would take Hwy 69/96 North to MLK Pkwy exit. Take MLK Pkwy North towards IH10. Turn Left on Washington and then turn Right onto Irving. Turn Right on Madison and travel to the first stop sign, which is Sycamore, and turn Right. You will pass over one set of railroad tracks. The road will make a 90-degree turn to the Left. Follow this road almost to the Old GSU Plant. The GSU Canal boat launch will be on the Left-hand side of the road. | 20. Closest Airport<br>Jefferson County   |
|   | 21. Closest Helo Spot<br>Jefferson County |

|   |                                |                                      |
|---|--------------------------------|--------------------------------------|
| 22. Trustee/Contact Numbers                   | 23. Resources at Risk          | 24. Width of inlet 440 ft.<br>in ft. |
| USCG: (409) 723-6509 RRC: (713)869-5001       | Atlas Priority                 | 25. Water depth in ft. 18 ft.        |
| USCG DUTY: (409) 719-1597 TPWD: (409)892-8666 | Environmental N/A              | 26. Current Medium                   |
| TGLO: (800) 832-8224 NRDA: (512) 463 -9309    | Economic Commercial/Industrial | 27. No. of Personnel 4               |
| TCEQ: (409)781-9330 USFWS: (281) 286-8282     |                                |                                      |

|   |
|---|
| 25. Booming Strategy Recommendation<br>Boom should be configured in an exclusion and or deflection pattern as to prevent oil from entering cuts. Bring sufficient anchors and rope to accomplish task |
|---|

AERIAL PHOTO



ON SITE PHOTO

|                  |                                       |                        |
|------------------|---------------------------------------|------------------------|
| 29. Prepared By: | 30. Reviewed by (PSC)                 | 31. Reviewed by (OSC): |
| Assignment List  | ICS 204 OS (Geographic Response Plan) | Project Updated:       |

"Response strategies may need to be modified to account for changes due to seasonality, weather conditions, spill characteristics, tides and any other considerations."



|                         |  |                                   |
|-------------------------|--|-----------------------------------|
| <b>1. Incident Name</b> | <b>2. Operational Period (Date/Time)</b> | <b>Assignment List ICS 204-OS</b> |
|-------------------------|--|-----------------------------------|

|                  |                          |
|------------------|--------------------------|
| <b>3. Branch</b> | <b>4. Division/Group</b> |
|------------------|--------------------------|

|                                |       |
|--------------------------------|-------|
| <b>5. Operations Personnel</b> |       |
| Operations Section Chief       | _____ |
| Branch Director                | _____ |
| Division/Group Supervisor      | _____ |

**6. Resources Assigned This Period** "X" Indicates 204a attachment with special instructions

| Resource Identifier | Leader | Contact Info # | # of Persons | Reporting Info/Notes/Remarks |
|---------------------|--------|----------------|--------------|------------------------------|
|                     |        |                |              |                              |
|                     |        |                |              |                              |
|                     |        |                |              |                              |
|                     |        |                |              |                              |
|                     |        |                |              |                              |
|                     |        |                |              |                              |

**7. Assignments**

**SAFETY NOTE:** Shallow, reptiles in area

|                                |                                      |                                  |                                   |                             |
|--------------------------------|--------------------------------------|----------------------------------|-----------------------------------|-----------------------------|
| <b>8. Site Number:</b><br>14-H | <b>9. Quad Name</b><br>Beaumont East | <b>10. NOAA Chart #</b><br>11343 | <b>11. GLO Atlas Page #</b><br>14 | <b>12. County</b><br>Orange |
|--------------------------------|--------------------------------------|----------------------------------|-----------------------------------|-----------------------------|

|   |  |            |   |            |
|---|--|------------|---|------------|
| <b>13. Site Information:</b> 14-H<br>Site 14-H is the Rose City Oil Field Canals (3 inlets), which are located within an oxbow that is on the East bank of the Neches River. This oxbow is approximately 1.5 miles north of the GSU Canal. This oxbow is almost directly across the Neches River from the GSU boat launch canal. The Rose City Oil Field Canals form a 90 degree angle on the North bank of this oxbow. The canals have high wooded banks and low brackish marsh banks. These 3 inlets feed the sensitive Rose City Oil Field Marsh. Economic Contacts: Kirby Inland Marine 713-435-1000. | <b>14. Latitude From:</b><br>N 30°04'46" | <b>To:</b> | <b>15. Longitude From:</b><br>W 94°03'07" | <b>To:</b> |
|---|--|------------|---|------------|

|   |   |  |
|---|---|--|
| <b>16. Closest Boat Ramp</b><br>GSU Canal boat launch | <b>17. Distance From Ramp</b><br>1.5 mi | <b>18. Boat Type</b><br>Flat Bottom Boat |
|---|---|--|

|  |  |  |
|--|--|--|
| <b>19. Directions From Local Sector</b><br>To reach the GSU Canal boat launch you would take Hwy 69/96 North to MLK Pkwy exit. Take MLK Pkwy North towards IH10. Turn Left on Washington and then turn Right onto Irving. Turn Right on Madison and travel to the first stop sign, which is Sycamore, and turn Right. You will pass over one set of railroad tracks. The road will make a 90-degree turn to the Left. Follow this road almost to the Old GSU Plant. The GSU Canal boat launch will be on the Left-hand side of the road. | <b>20. Closest Airport</b><br>Jefferson County | <b>21. Closest Helo Spot</b><br>Jefferson County |
|--|--|--|

|   |  |   |
|---|--|---|
| <b>22. Trustee/Contact Numbers</b>                | <b>23. Resources at Risk</b>                   | <b>24. Width of inlet</b> Clockwise for top. 120 ft., 120 ft., and 70 ft. |
| USCG: (409) 723-6509    RRC: (713) 869-5001       | <b>Atlas Priority</b>                          | <b>25. Water depth in ft.</b> 13 ft.                                      |
| USCG DUTY: (409) 719-1597    TPWD: (409) 892-8666 | <b>Environmental</b> Brackish marsh habitat    | <b>26. Current</b> Medium   |
| TGLO: (800) 832-8224    NRDA: (512) 463-9309      | <b>Economic</b> Commercial and Recreational tr | <b>27. No. of Personnel</b> 4   |
| TCEQ: (409) 781-9330    USFWS: (281) 286-8282     |  |   |

**25. Booming Strategy Recommendation**  
Boom should be configured in an exclusion and or deflection pattern as to prevent oil from entering cuts. Bring sufficient anchors and rope to accomplish task.



|                         |  |                               |
|-------------------------|--|-------------------------------|
| <b>29. Prepared By:</b> | <b>30. Reviewed by (PSC)</b>                 | <b>31. Reviewed by (OSC):</b> |
| <b>Assignment List</b>  | <b>ICS 204 OS (Geographic Response Plan)</b> | <b>Project Updated:</b>       |

"Response strategies may need to be modified to account for changes due to seasonality, weather conditions, spill characteristics, tides and any other considerations."



|                  |                                   |                            |
|------------------|-----------------------------------|----------------------------|
| 1. Incident Name | 2. Operational Period (Date/Time) | Assignment List ICS 204-OS |
|------------------|-----------------------------------|----------------------------|

|           |                   |
|-----------|-------------------|
| 3. Branch | 4. Division/Group |
|-----------|-------------------|

|                           |       |
|---------------------------|-------|
| 5. Operations Personnel   |       |
| Operations Section Chief  | _____ |
| Branch Director           | _____ |
| Division/Group Supervisor | _____ |

| 6. Resources Assigned This Period |        |                |              |                              |  | "X" Indicates 204a attachment with special instructions |
|-----------------------------------|--------|----------------|--------------|------------------------------|--|---|
| Resource Identifier               | Leader | Contact Info # | # of Persons | Reporting Info/Notes/Remarks |  |   |
|                                   |        |                |              |                              |  |   |
|                                   |        |                |              |                              |  |   |
|                                   |        |                |              |                              |  |   |
|                                   |        |                |              |                              |  |   |
|                                   |        |                |              |                              |  |   |
|                                   |        |                |              |                              |  |   |

|                |
|----------------|
| 7. Assignments |
|----------------|

**SAFETY NOTE:** Shallow near banks. Contact Exxon Mobil before working in this area.

|                         |                               |                           |                            |                         |
|-------------------------|-------------------------------|---------------------------|----------------------------|-------------------------|
| 8. Site Number:<br>14-I | 9. Quad Name<br>Beaumont East | 10. NOAA Chart #<br>11343 | 11. GLO Atlas Page #<br>14 | 12. County<br>Jefferson |
|-------------------------|-------------------------------|---------------------------|----------------------------|-------------------------|

|  |  |  |     |
|--|--|--|-----|
| 13. Site Information: <b>14-I</b><br>Site 14-I is the canal just South of the Exxon Mobil docks located on the West bank of the Neches River. This site is approximately 0.5 miles North of the Old GSU Canal ExxonMobil has two section of containment boom deployed at the end of the canal at all times. Economic Contacts: Exxon Mobil Oil Corp. (409) 833-9411. |  | 14. Latitude From:<br><b>N 30°04'19.79"</b>  | To: |
|  |  | 15. Longitude From:<br><b>W 94°03'23.18"</b> | To: |

|  |                                  |                                   |
|--|----------------------------------|-----------------------------------|
| 16. Closest Boat Ramp<br>GSU Canal boat launch | 17. Distance From Ramp<br>0.5 mi | 18. Boat Type<br>Flat Bottom Boat |
|--|----------------------------------|-----------------------------------|

|   |   |
|---|---|
| 19. Directions From Local Sector<br>To reach the GSU Canal boat launch you would take Hwy 69/96 North to MLK Pkwy exit. Take MLK Pkwy North towards IH10. Turn Left on Washington and then turn Right onto Irving. Turn Right on Madison and travel to the first stop sign, which is Sycamore, and turn Right. You will pass over one set of railroad tracks. The road will make a 90-degree turn to the Left. Follow this road almost to the Old GSU Plant. The GSU Canal boat launch will be on the Left-hand side of the road. | 20. Closest Airport<br>Jefferson County   |
|   | 21. Closest Helo Spot<br>Jefferson County |

|   |                                 |                                   |
|---|---------------------------------|-----------------------------------|
| 22. Trustee/Contact Numbers                   | 23. Resources at Risk           | 24. Width of inlet 870 ft. in ft. |
| USCG: (409) 723-6509 RRC: (713)869-5001       | Atlas Priority                  | 25. Water depth in ft. 27 ft.     |
| USCG DUTY: (409) 719-1597 TPWD: (409)892-8666 | Environmental N/A               | 26. Current Medium                |
| TGLO: (800) 832-8224 NRDA: (512) 463 -9309    | Economic Commercial/ Industrial | 27. No. of Personnel 4            |
| TCEQ: (409)781-9330 USFWS: (281) 286-8282     |                                 |                                   |

|  |
|--|
| 25. Booming Strategy Recommendation<br>Boom should be configured in an exclusion and or deflection pattern as to prevent oil from entering cuts. Bring sufficient anchors and rope to accomplish task. |
|--|

AERIAL PHOTO

ON SITE PHOTO



|                  |                                       |                        |
|------------------|---------------------------------------|------------------------|
| 29. Prepared By: | 30. Reviewed by (PSC)                 | 31. Reviewed by (OSC): |
| Assignment List  | ICS 204 OS (Geographic Response Plan) | Project Updated:       |

"Response strategies may need to be modified to account for changes due to seasonality, weather conditions, spill characteristics, tides and any other considerations."



|                  |                                   |                            |
|------------------|-----------------------------------|----------------------------|
| 1. Incident Name | 2. Operational Period (Date/Time) | Assignment List ICS 204-OS |
|------------------|-----------------------------------|----------------------------|

|           |                   |
|-----------|-------------------|
| 3. Branch | 4. Division/Group |
|-----------|-------------------|

|                           |       |
|---------------------------|-------|
| 5. Operations Personnel   |       |
| Operations Section Chief  | _____ |
| Branch Director           | _____ |
| Division/Group Supervisor | _____ |

| 6. Resources Assigned This Period |        |                |              |                              |  | "X" Indicates 204a attachment with special instructions |
|-----------------------------------|--------|----------------|--------------|------------------------------|--|---|
| Resource Identifier               | Leader | Contact Info # | # of Persons | Reporting Info/Notes/Remarks |  |   |
|                                   |        |                |              |                              |  |   |
|                                   |        |                |              |                              |  |   |
|                                   |        |                |              |                              |  |   |
|                                   |        |                |              |                              |  |   |
|                                   |        |                |              |                              |  |   |
|                                   |        |                |              |                              |  |   |

|                |
|----------------|
| 7. Assignments |
|----------------|

**SAFETY NOTE:** Shallow area with stumps

|                         |                               |                           |                            |                         |
|-------------------------|-------------------------------|---------------------------|----------------------------|-------------------------|
| 8. Site Number:<br>14-J | 9. Quad Name<br>Beaumont East | 10. NOAA Chart #<br>11343 | 11. GLO Atlas Page #<br>14 | 12. County<br>Jefferson |
|-------------------------|-------------------------------|---------------------------|----------------------------|-------------------------|

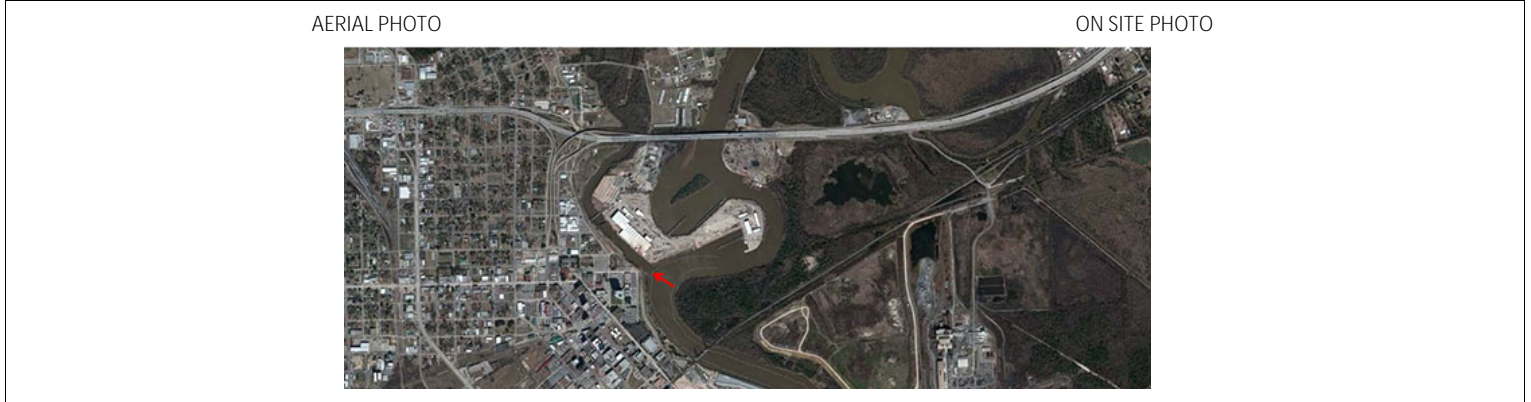
|   |  |     |  |     |
|---|--|-----|--|-----|
| 13. Site Information: <b>14-J</b><br>Site 14-J is Brakes Bayou, which is located on the West bank of the Neches River approximately 1 mile South of IH10. The Beaumont Yacht club has a boat launch within 1 mile, however arrangements must be made to gain access through the gate. Economic Contacts: CB & I (409) 833-7091. Beaumont Yacht Club 409-832-1456. | 14. Latitude From:<br><b>N 30°05'12.5"</b> | To: | 15. Longitude From:<br><b>W 94°05'41.86"</b> | To: |
|---|--|-----|--|-----|

|  |                                |                                   |
|--|--------------------------------|-----------------------------------|
| 16. Closest Boat Ramp<br>Beaumont Yacht Club | 17. Distance From Ramp<br>1 mi | 18. Boat Type<br>Flat Bottom Boat |
|--|--------------------------------|-----------------------------------|

|   |   |
|---|---|
| 19. Directions From Local Sector<br>To reach the Beaumont Yacht Club you would take Hwy 69/96 South to Hwy 73 East. Take Hwy 73 East to Hwy 62 North/Hwy 73 East towards IH10. Take IH10 West towards Beaumont. Take the Pine St./Magnolia St. exit after you cross over the Neches River on IH10. Turn Right onto Pine St. and then a Right on Marina Dr. Follow the signs to the Beaumont Yacht Club. | 20. Closest Airport<br>Jefferson County   |
|   | 21. Closest Helo Spot<br>Jefferson County |

|  |                                 |                                   |
|--|---------------------------------|-----------------------------------|
| 22. Trustee/Contact Numbers                    | 23. Resources at Risk           | 24. Width of inlet 300 ft. in ft. |
| USCG: (409) 723-6509 RRC: (713) 869-5001       | Atlas Priority                  | 25. Water depth in ft. 11 ft.     |
| USCG DUTY: (409) 719-1597 TPWD: (409) 892-8666 | Environmental N/A               | 26. Current Slow                  |
| TGLO: (800) 832-8224 NRDA: (512) 463-9309      | Economic Commercial/ Industrial | 27. No. of Personnel 4            |
| TCEQ: (409) 781-9330 USFWS: (281) 286-8282     |                                 |                                   |

|  |
|--|
| 25. Booming Strategy Recommendation<br>Boom should be configured in an exclusion pattern as to prevent oil from entering cuts. Bring sufficient anchors and rope to accomplish task. |
|--|



|                  |                                       |                        |
|------------------|---------------------------------------|------------------------|
| 29. Prepared By: | 30. Reviewed by (PSC)                 | 31. Reviewed by (OSC): |
| Assignment List  | ICS 204 OS (Geographic Response Plan) | Project Updated:       |

"Response strategies may need to be modified to account for changes due to seasonality, weather conditions, spill characteristics, tides and any other considerations."



|                  |                                   |                            |
|------------------|-----------------------------------|----------------------------|
| 1. Incident Name | 2. Operational Period (Date/Time) | Assignment List ICS 204-OS |
|------------------|-----------------------------------|----------------------------|

|           |                   |
|-----------|-------------------|
| 3. Branch | 4. Division/Group |
|-----------|-------------------|

|                           |                                |
|---------------------------|--------------------------------|
| 5. Operations Personnel   | Operations Section Chief _____ |
| Branch Director           | _____                          |
| Division/Group Supervisor | _____                          |

6. Resources Assigned This Period "X" Indicates 204a attachment with special instructions

| Resource Identifier | Leader | Contact Info # | # of Persons | Reporting Info/Notes/Remarks |
|---------------------|--------|----------------|--------------|------------------------------|
|                     |        |                |              |                              |
|                     |        |                |              |                              |
|                     |        |                |              |                              |
|                     |        |                |              |                              |
|                     |        |                |              |                              |
|                     |        |                |              |                              |

7. Assignments

**SAFETY NOTE:** Rip-rap is submerged in the Neches River along banks of the Beaumont Yacht Club

|                         |                               |                           |                            |                         |
|-------------------------|-------------------------------|---------------------------|----------------------------|-------------------------|
| 8. Site Number:<br>14-K | 9. Quad Name<br>Beaumont East | 10. NOAA Chart #<br>11343 | 11. GLO Atlas Page #<br>14 | 12. County<br>Jefferson |
|-------------------------|-------------------------------|---------------------------|----------------------------|-------------------------|

|   |   |     |  |     |
|---|---|-----|--|-----|
| 13. Site Information: <b>14-K</b><br>Site 14-K is the Beaumont Yacht Club. This site is located on the West bank of the Neches River approximately 0.1 of a mile North of IH10. The Yacht Club is not accessible to the public after hours and on certain days. Personnel should call before trying to access the boat launch. There is also a small inlet immediately North of this site. This small inlet could serve as a staging area or containment area. Economic Contacts: Beaumont Yacht Club 409-832-1456. | 14. Latitude From:<br><b>N 30°05'42.53"</b> | To: | 15. Longitude From:<br><b>W 94°05'30.13"</b> | To: |
|---|---|-----|--|-----|

|  |                                   |                                   |
|--|-----------------------------------|-----------------------------------|
| 16. Closest Boat Ramp<br>Beaumont Yacht Club | 17. Distance From Ramp<br>On Site | 18. Boat Type<br>Flat Bottom Boat |
|--|-----------------------------------|-----------------------------------|

|   |   |
|---|---|
| 19. Directions From Local Sector<br>To reach the Beaumont Yacht Club you would take Hwy 69/96 South to Hwy 73 East. Take Hwy 73 East to Hwy 62 North/Hwy 73 East towards IH10. Take IH10 West towards Beaumont. Take the Pine St./Magnolia St. exit after you cross over the Neches River on IH10. Turn Right onto Pine St. and then a Right on Marina Dr. Follow the signs to the Beaumont Yacht Club. | 20. Closest Airport<br>Jefferson County   |
|   | 21. Closest Helo Spot<br>Jefferson County |

|  |   |  |
|--|---|--|
| 22. Trustee/Contact Numbers<br>USCG: (409) 723-6509 RRC: (713)869-5001<br>USCG DUTY: (409) 719-1597 TPWD: (409)892-8666<br>TGLO: (800) 832-8224 NRDA: (512) 463 -9309<br>TCEQ: (409)781-9330 USFWS: (281) 286-8282 | 23. Resources at Risk<br>Atlas Priority<br>Environmental N/A<br>Economic Recreational | 24. Width of inlet 130 ft. in ft.<br>25. Water depth in ft. 10 ft.<br>26. Current Slow<br>27. No. of Personnel 4 |
|--|---|--|

25. Booming Strategy Recommendation  
Boom should be configured in an exclusion pattern as to prevent oil from entering cut. Bring sufficient anchors and rope to accomplish task.

AERIAL PHOTO



ON SITE PHOTO

|                  |                                       |                        |
|------------------|---------------------------------------|------------------------|
| 29. Prepared By: | 30. Reviewed by (PSC)                 | 31. Reviewed by (OSC): |
| Assignment List  | ICS 204 OS (Geographic Response Plan) | Project Updated:       |

"Response strategies may need to be modified to account for changes due to seasonality, weather conditions, spill characteristics, tides and any other considerations."



|                  |                                   |                            |
|------------------|-----------------------------------|----------------------------|
| 1. Incident Name | 2. Operational Period (Date/Time) | Assignment List ICS 204-OS |
|------------------|-----------------------------------|----------------------------|

|           |                   |
|-----------|-------------------|
| 3. Branch | 4. Division/Group |
|-----------|-------------------|

|   |  |
|---|--|
| 5. Operations Personnel<br>Operations Section Chief _____<br>Branch Director _____<br>Division/Group Supervisor _____ |  |
|---|--|

6. Resources Assigned This Period "X" Indicates 204a attachment with special instructions

| Resource Identifier | Leader | Contact Info # | # of Persons | Reporting Info/Notes/Remarks |
|---------------------|--------|----------------|--------------|------------------------------|
|                     |        |                |              |                              |
|                     |        |                |              |                              |
|                     |        |                |              |                              |
|                     |        |                |              |                              |
|                     |        |                |              |                              |
|                     |        |                |              |                              |

|                |
|----------------|
| 7. Assignments |
|----------------|

**SAFETY NOTE:** Submerged trees and logs, recreational traffic

|                         |                               |                           |                            |                         |
|-------------------------|-------------------------------|---------------------------|----------------------------|-------------------------|
| 8. Site Number:<br>14-L | 9. Quad Name<br>Beaumont East | 10. NOAA Chart #<br>11343 | 11. GLO Atlas Page #<br>14 | 12. County<br>Jefferson |
|-------------------------|-------------------------------|---------------------------|----------------------------|-------------------------|

|  |  |  |     |
|--|--|--|-----|
| 13. Site Information: <b>14-L</b><br>Site 14-L is the first inlet North of the Beaumont Yacht Club. This inlet is located on the West bank of the Neches River approximately 0.75 of a mile North of IH10. The banks of this inlet are wooded with a sand substrate. The banks of the Neches River drop off quickly just a few feet from shore. The Yacht Club gates are locked after hours and on certain days. Personnel should call before trying to access the boat launch. Economic Contacts: Beaumont Yacht Club 409-832-1456. Lower Neches Valley Authority (409) 892-1805. | 14. Latitude From:<br><b>N 30°06'19.77"</b>  |  | To: |
|  | 15. Longitude From:<br><b>W 94°05'09.70"</b> |  | To: |

|  |                                   |                                   |
|--|-----------------------------------|-----------------------------------|
| 16. Closest Boat Ramp<br>Beaumont Yacht Club | 17. Distance From Ramp<br>0.75 mi | 18. Boat Type<br>Flat Bottom Boat |
|--|-----------------------------------|-----------------------------------|

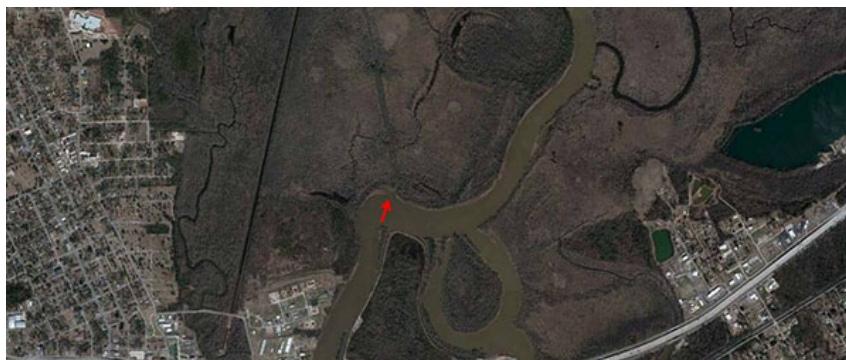
|   |   |
|---|---|
| 19. Directions From Local Sector<br>To reach the Beaumont Yacht Club you would take Hwy 69/96 South to Hwy 73 East. Take Hwy 73 East to Hwy 62 North/Hwy 73 East towards IH10. Take IH10 West towards Beaumont. Take the Pine St./Magnolia St. exit after you cross over the Neches River on IH10. Turn Right onto Pine St. and then a Right on Marina Dr. Follow the signs to the Beaumont Yacht Club. | 20. Closest Airport<br>Jefferson County           |
|   | 21. Closest Helo Spot<br>Jefferson County Airport |

|  |  |  |
|--|--|--|
| 22. Trustee/Contact Numbers<br>USCG: (409) 723-6509 RRC: (713)869-5001<br>USCG DUTY: (409) 719-1597 TPWD: (409)892-8666<br>TGLO: (800) 832-8224 NRDA: (512) 463 -9309<br>TCEQ: (409)781-9330 USFWS: (281) 286-8282 | 23. Resources at Risk<br>Atlas Priority Not rated<br>Environmental Freshwater swamp/marsh habitat<br>Economic Recreational | 24. Width of inlet 120 ft. in ft.<br>25. Water depth in ft. 10 ft.<br>26. Current Slow<br>27. No. of Personnel 4 |
|--|--|--|

|   |
|---|
| 25. Booming Strategy Recommendation<br>Boom should be configured in an exclusion and or deflection pattern as to prevent oil from entering cuts. Bring sufficient anchors and rope to accomplish task |
|---|

AERIAL PHOTO

ON SITE PHOTO



|                  |                       |                        |
|------------------|-----------------------|------------------------|
| 29. Prepared By: | 30. Reviewed by (PSC) | 31. Reviewed by (OSC): |
|------------------|-----------------------|------------------------|

|                 |                                       |                  |
|-----------------|---------------------------------------|------------------|
| Assignment List | ICS 204 OS (Geographic Response Plan) | Project Updated: |
|-----------------|---------------------------------------|------------------|

"Response strategies may need to be modified to account for changes due to seasonality, weather conditions, spill characteristics, tides and any other considerations."

|                  |                                   |                            |
|------------------|-----------------------------------|----------------------------|
| 1. Incident Name | 2. Operational Period (Date/Time) | Assignment List ICS 204-OS |
|------------------|-----------------------------------|----------------------------|

|           |                   |
|-----------|-------------------|
| 3. Branch | 4. Division/Group |
|-----------|-------------------|

|                           |       |
|---------------------------|-------|
| 5. Operations Personnel   | _____ |
| Operations Section Chief  | _____ |
| Branch Director           | _____ |
| Division/Group Supervisor | _____ |

| 6. Resources Assigned This Period |        |                |              |                              |  | "X" Indicates 204a attachment with special instructions |
|-----------------------------------|--------|----------------|--------------|------------------------------|--|---|
| Resource Identifier               | Leader | Contact Info # | # of Persons | Reporting Info/Notes/Remarks |  |   |
|                                   |        |                |              |                              |  |   |
|                                   |        |                |              |                              |  |   |
|                                   |        |                |              |                              |  |   |
|                                   |        |                |              |                              |  |   |
|                                   |        |                |              |                              |  |   |
|                                   |        |                |              |                              |  |   |

|                |
|----------------|
| 7. Assignments |
|----------------|

**SAFETY NOTE:** Submerged trees/ logs, shallow near banks, reptiles in area

|                         |                               |                           |                            |                      |
|-------------------------|-------------------------------|---------------------------|----------------------------|----------------------|
| 8. Site Number:<br>14-M | 9. Quad Name<br>Beaumont East | 10. NOAA Chart #<br>11343 | 11. GLO Atlas Page #<br>14 | 12. County<br>Orange |
|-------------------------|-------------------------------|---------------------------|----------------------------|----------------------|

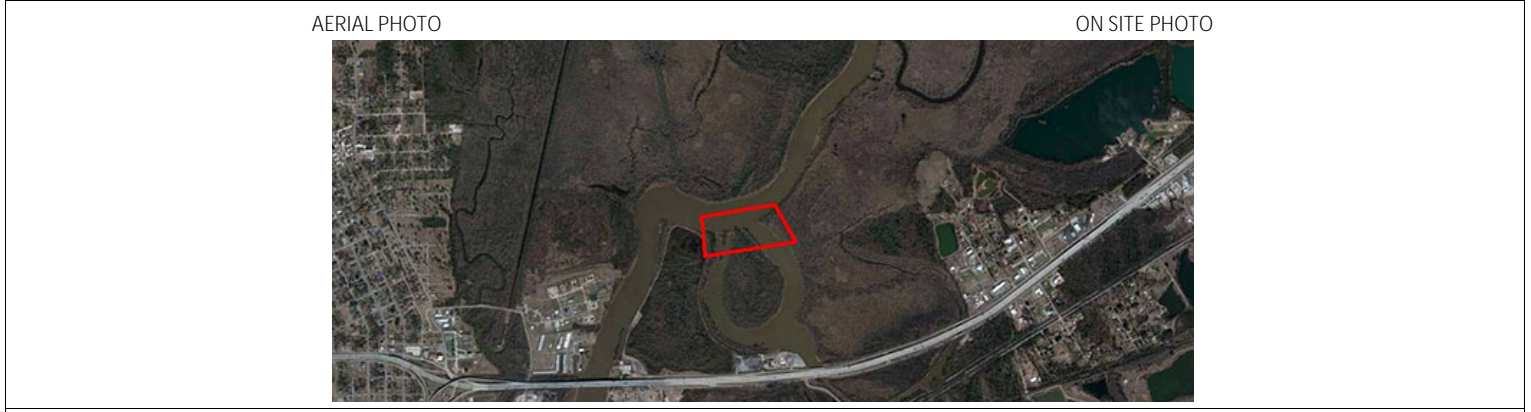
|   |  |     |  |
|---|--|-----|--|
| 13. Site Information: <b>14-M</b><br>Site 14-M consists of two inlets and is located on the East bank of the Neches River approximately 1 mile North of IH10. The inlets form an oxbow that leads to Bairds Bayou, which crosses under IH10 near Vidor. Bairds Bayou leads to Apac-Texas, Inc. facility. The shore is wooded with sandy banks. The banks of the river drop off very quickly just a few feet from shore. Due to the thick vegetation and lack of road access, this site would be difficult to clean if oil was allowed to enter the inlets. <b>Lower Neches Valley Authority (409) 892-1805. APAC-Texas Inc. (409) 866-1444.</b> | 14. Latitude From:<br><b>N 30°06'12.24"</b>  | To: |  |
|   | 15. Longitude From:<br><b>W 94°04'53.29"</b> | To: |  |

|  |                                |                                   |
|--|--------------------------------|-----------------------------------|
| 16. Closest Boat Ramp<br>Beaumont Yacht Club | 17. Distance From Ramp<br>1 mi | 18. Boat Type<br>Flat Bottom Boat |
|--|--------------------------------|-----------------------------------|

|   |  |
|---|--|
| 19. Directions From Local Sector<br>To reach the Beaumont Yacht Club you would take Hwy 69/96 South to Hwy 73 East. Take Hwy 73 East to Hwy 62 North/Hwy 73 East towards IH10. Take IH10 West towards Beaumont. Take the Pine St./Magnolia St. exit after you cross over the Neches River on IH10. Turn Right onto Pine St. and then a Right on Marina Dr. Follow the signs to the Beaumont Yacht Club. | 20. Closest Airport<br>Jefferson County<br><br>21. Closest Helo Spot<br>Jefferson County |
|---|--|

|  |  |   |
|--|--|---|
| 22. Trustee/Contact Numbers<br>USCG: (409) 723-6509    RRC: (713)869-5001<br>USCG DUTY: (409) 719-1597    TPWD: (409)892-8666<br>TGLO: (800) 832-8224    NRDA: (512) 463 -9309<br>TCEQ: (409)781-9330    USFWS: (281) 286-8282 | 23. Resources at Risk<br>Atlas Priority    Not rated<br><br>Environmental    Freshwater swamp/marsh habitat<br><br>Economic    Commercial/Industrial | 24. Width of inlet    90 ft. and 270 ft. in ft.<br>25. Water depth in ft.    18 ft.<br>26. Current    Slow<br>27. No. of Personnel    4 |
|--|--|---|

|  |
|--|
| 25. Booming Strategy Recommendation<br>Boom should be configured in an exclusion and or deflection pattern as to prevent oil from entering cuts. Bring sufficient anchors and rope to accomplish task. |
|--|



|                  |                                       |                        |
|------------------|---------------------------------------|------------------------|
| 29. Prepared By: | 30. Reviewed by (PSC)                 | 31. Reviewed by (OSC): |
| Assignment List  | ICS 204 OS (Geographic Response Plan) | Project Updated:       |

"Response strategies may need to be modified to account for changes due to seasonality, weather conditions, spill characteristics, tides and any other considerations."



|                  |                                   |                            |
|------------------|-----------------------------------|----------------------------|
| 1. Incident Name | 2. Operational Period (Date/Time) | Assignment List ICS 204-OS |
|------------------|-----------------------------------|----------------------------|

|           |                   |
|-----------|-------------------|
| 3. Branch | 4. Division/Group |
|-----------|-------------------|

|                           |       |
|---------------------------|-------|
| 5. Operations Personnel   | _____ |
| Operations Section Chief  | _____ |
| Branch Director           | _____ |
| Division/Group Supervisor | _____ |

| 6. Resources Assigned This Period |        |                |              |                              |  | "X" Indicates 204a attachment with special instructions |
|-----------------------------------|--------|----------------|--------------|------------------------------|--|---|
| Resource Identifier               | Leader | Contact Info # | # of Persons | Reporting Info/Notes/Remarks |  |   |
|                                   |        |                |              |                              |  |   |
|                                   |        |                |              |                              |  |   |
|                                   |        |                |              |                              |  |   |
|                                   |        |                |              |                              |  |   |
|                                   |        |                |              |                              |  |   |
|                                   |        |                |              |                              |  |   |

|                |
|----------------|
| 7. Assignments |
|----------------|

**SAFETY NOTE:** Submerged logs, reptiles, recreational traffic

|                         |                               |                           |                            |                      |
|-------------------------|-------------------------------|---------------------------|----------------------------|----------------------|
| 8. Site Number:<br>14-N | 9. Quad Name<br>Beaumont East | 10. NOAA Chart #<br>11343 | 11. GLO Atlas Page #<br>14 | 12. County<br>Orange |
|-------------------------|-------------------------------|---------------------------|----------------------------|----------------------|

|  |   |     |  |     |
|--|---|-----|--|-----|
| 13. Site Information: <b>14-N</b><br>Site 14-N is an inlet located approximately 1.75 miles North of IH10 on the East bank of the Neches River. The banks of the inlet are wooded with sand substrate. This inlet eventually leads to Ross Ridge, which is a sensitive freshwater swamp habitat. Economic Contacts: Lower Neches Valley Authority(409) 892-1805. Beaumont Yacht Club 409-832-1456. | 14. Latitude From:<br><b>N 30°06'49.80"</b> | To: | 15. Longitude From:<br><b>W 94°04'22.74"</b> | To: |
|--|---|-----|--|-----|

|  |                                   |                                   |
|--|-----------------------------------|-----------------------------------|
| 16. Closest Boat Ramp<br>Beaumont Yacht Club | 17. Distance From Ramp<br>1.75 mi | 18. Boat Type<br>Flat Bottom Boat |
|--|-----------------------------------|-----------------------------------|

|   |   |
|---|---|
| 19. Directions From Local Sector<br>To reach the Beaumont Yacht Club you would take Hwy 69/96 South to Hwy 73 East. Take Hwy 73 East to Hwy 62 North/Hwy 73 East towards IH10. Take IH10 West towards Beaumont. Take the Pine St./Magnolia St. exit after you cross over the Neches River on IH10. Turn Right onto Pine St. and then a Right on Marina Dr. Follow the signs to the Beaumont Yacht Club. | 20. Closest Airport<br>Jefferson County   |
|   | 21. Closest Helo Spot<br>Jefferson County |

|  |  |  |
|--|--|--|
| 22. Trustee/Contact Numbers<br>USCG: (409) 723-6509 RRC: (713)869-5001<br>USCG DUTY: (409) 719-1597 TPWD: (409)892-8666<br>TGLO: (800) 832-8224 NRDA: (512) 463 -9309<br>TCEQ: (409)781-9330 USFWS: (281) 286-8282 | 23. Resources at Risk<br>Atlas Priority Not rated<br>Environmental Freshwater marsh/swamp habitat<br>Economic Recreational | 24. Width of inlet 170 ft. in ft.<br>25. Water depth in ft. 10 ft.<br>26. Current Slow<br>27. No. of Personnel 4 |
|--|--|--|

|   |
|---|
| 25. Booming Strategy Recommendation<br>Boom should be configured in an exclusion and or deflection pattern as to prevent oil from entering cuts. Bring sufficient anchors and rope to accomplish task |
|---|



|                  |                                       |                        |
|------------------|---------------------------------------|------------------------|
| 29. Prepared By: | 30. Reviewed by (PSC)                 | 31. Reviewed by (OSC): |
| Assignment List  | ICS 204 OS (Geographic Response Plan) | Project Updated:       |

"Response strategies may need to be modified to account for changes due to seasonality, weather conditions, spill characteristics, tides and any other considerations."