





# Quadrant: WEST OF GREENS BAYOU

Map # :17

Biological Information for this quadrant represents known concentration areas of occurrence.

## Habitat Priority Protection Areas

PPA ID	PRIORITY	POLY DESCRIPTION	BIRDS RANK	BIRDS DESCRIPTION	FISH RANK	FISH DESCRIPTION	WETLANDS RANK	WETLANDS DESCRIPTION
PPA0051	HIGH	Bessie Heights Marsh (largely submerged)	HIGH	Feeding area for wading birds, waterfowl; nesting by moorhen, rails, wading birds; river otter	HIGH	Abundant red drum, sheephead, juvenile blue crab; high priority fishing area, commercial crabbing	HIGH	Formerly vegetated marsh, but now primarily open water
PPA0075	MEDIUM	Marsh west of Bridge City	HIGH				HIGH	
PPA0086	HIGH	Marsh between Sabine River and Black Bayou; accessible to boats from both	HIGH		MEDIUM	Nursery	MEDIUM	
PPA0087	LOW	Marsh west of Sabine River	HIGH				LOW	
PPA0096	HIGH	South shore of Black Bayou, east shore of East Pass	MEDIUM	Alligator, river otter	HIGH	High priority nursery; some freshwater fishing; shrimping and crabbing	HIGH	
PPA0099	HIGH	Marsh south of Black Bayou, mostly in Sabine NWR	HIGH		HIGH	High priority nursery, moderate recreational fishing	HIGH	Intermediate to brackish marsh
PPA0100	MEDIUM	Little West Pass, mouth of Hickory River	HIGH				HIGH	
PPA0104	HIGH	Old River Bayou and adjacent marsh; part of Lower Neches WMA	HIGH	Brackish marsh used by waterfowl (gadwall, teal, etc.), nesting rails, wading birds, alligator	HIGH	High quality nursery for fish, shrimp	HIGH	Marshhay cordgrass; some leveed areas
PPA0113	MEDIUM	South shore of Sabine Island	MEDIUM		LOW	Nursery	MEDIUM	Tidal marsh, some spoil, Chinese tallow
PPA0131	HIGH	Sabine Lake shore, part of Sabine NWR	MEDIUM	Feeding by shorebirds at low tide	HIGH	Nursery	HIGH	
PPA0136	MEDIUM	Leveed area east of ICW	HIGH	Deep water ducks (e.g. canvasback, bufflehead, goldeneye, scaup), some dabbling ducks, large concentration of wintering common loon; white pelican, terns			MEDIUM	
PPA0166	LOW	Sabine Neches Ship Channel			HIGH	Recreational fishing, commercial crabbing, shrimping		

## Biological Resources

### Bird

RARNUM	NAME	S	F	T	E	CONC	J	F	M	A	M	J	J	A	S	O	N	D	Nesting	Migrating	Molting
0015	Osprey					-	X	X	X	X	X				X	X	X	X	-	-	-
	Wading birds					-	X	X	X	X	X	X	X	X	X	X	X	X	-	-	-
	Dabbling ducks					-	X	X	X	X	X				X	X	X	X	-	-	-
	Waterfowl					-	X	X	X	X	X	X	X	X	X	X	X	X	-	-	-
0031	Black-necked stilt					10S		X	X	X	X	X	X	X	X	X			-	-	-
	Dowitchers					100S	X	X	X	X	X		X	X	X	X	X	X	-	JUL-MAY*	-
	Dunlin					100S	X	X	X	X	X				X	X	X	X	-	-	-
	Killdeer					100S	X	X	X	X	X	X	X	X	X	X	X	X	-	DEC-MAR	-
	Shorebirds					100S	X	X	X	X	X		X	X	X	X	X	X	-	-	-
	Western sandpiper					100S	X	X	X	X	X	X	X	X	X	X	X	X	-	JUL-MAY*	-
	Willet					100S	X	X	X	X	X	X	X	X	X	X	X	X	-	AUG-APR*	-
	Yellowlegs					10S	X	X	X	X	X		X	X	X	X	X	X	-	JUL-MAY*	-
	Marsh birds					-	X	X	X	X	X	X	X	X	X	X	X	X	-	-	-
	Wading birds					-	X	X	X	X	X	X	X	X	X	X	X	X	-	-	-
	Mottled duck					-	X	X	X	X	X	X	X	X	X	X	X	X	FEB-AUG	-	JUN-AUG
Waterfowl					-	X	X	X	X	X	X	X	X	X	X	X	X	-	-	-	
0083	Shorebirds					-	X	X	X	X	X	X	X	X	X	X	X	X	-	-	-
	Wading birds					-	X	X	X	X	X	X	X	X	X	X	X	X	-	-	-
	Mottled duck					-	X	X	X	X	X	X	X	X	X	X	X	X	FEB-AUG	-	JUN-AUG
	Waterfowl					-	X	X	X	X	X	X	X	X	X	X	X	X	-	-	-
0084	American white pelican					-	X	X	X							X	X	X	-	-	-
	Common loon					HIGH	X	X	X	X	X					X	X	X	-	-	-
	Terns					-	X	X	X	X	X	X	X	X	X	X	X	X	-	-	-
	Bufflehead					-	X	X	X								X	X	-	-	-
	Canvasback					-	X	X	X							X	X	X	-	-	-
	Common goldeneye					-	X	X	X	X							X	X	-	-	-
	Dabbling ducks					-	X	X	X	X	X				X	X	X	X	-	-	-
	Diving ducks					-	X	X	X	X	X					X	X	X	-	-	-
0117	Scaup					-	X	X	X	X	X				X	X	X	-	-	-	
	Diving birds					-	X	X	X	X	X	X	X	X	X	X	X	X	-	-	-
	Diving ducks					-	X	X	X	X	X					X	X	X	-	-	-
0245	Diving birds					-	X	X	X	X	X	X	X	X	X	X	X	X	-	-	-
	Osprey					-	X	X	X	X	X				X	X	X	X	-	-	-
	Wading birds					-	X	X	X	X	X	X	X	X	X	X	X	X	-	-	-
	Dabbling ducks					-	X	X	X	X	X				X	X	X	X	-	-	-
	Diving ducks					-	X	X	X	X	X					X	X	X	-	-	-
	Waterfowl					-	X	X	X	X	X	X	X	X	X	X	X	X	-	-	-

### Fish

RARNUM	NAME	S	F	T	E	CONC	J	F	M	A	M	J	J	A	S	O	N	D	Spawning	Eggs	Larvae	Juveniles	Adults
0485	Gizzard shad					ABUNDANT	X	X	X	X	X	X	X	X	X	X	X	X	-	-	-	-	JAN-DEC
	Atlantic croaker					HIGHLY-ABUNDANT	X	X	X	X	X	X	X	X	X	X	X	X	-	-	JAN-JUN	JAN-DEC	JAN-DEC
	Bay anchovy					COMMON	X	X	X	X	X	X	X	X	X	X	X	X	MAR-NOV	MAR-NOV	MAR-NOV	JAN-DEC	JAN-DEC
	Black drum					COMMON	X	X	X	X	X	X	X	X	X	X	X	X	-	-	-	JAN-DEC	JAN-DEC
	Bull shark					RARE	X	X	X	X	X	X	X	X	X	X	X	X	-	MAY-AUG	MAY-AUG	APR-NOV	JAN-DEC
	Gafftopsail catfish					ABUNDANT				X	X	X	X	X	X	X			APR-MAY	-	-	APR-OCT	APR-OCT
	Gulf menhaden					ABUNDANT	X	X	X	X	X	X	X	X	X	X	X	X	-	-	-	JAN-DEC	APR-DEC
	Hardhead catfish					ABUNDANT	X	X	X	X	X	X	X	X	X	X	X	X	MAY-AUG	MAY-SEP	MAY-SEP	JUN-SEP	JAN-DEC

## Fish

RARNUM	NAME	S F	T E	CONC	J	F	M	A	M	J	J	A	S	O	N	D	Spawning	Eggs	Larvae	Juveniles	Adults
	Pinfish			RARE				X	X	X	X	X	X	X			-	-	-	APR-OCT	APR-OCT
	Red drum			COMMON	X	X	X	X	X	X	X	X	X	X	X	X	-	-	-	JAN-DEC	JAN-DEC
	Sand seatrout			COMMON	X	X	X	X	X	X	X	X	X	X	X	X	-	-	-	JAN-DEC	JAN-DEC
	Sheepshead			COMMON	X	X	X	X	X	X	X	X	X	X	X	X	-	-	-	DEC-FEB	JAN-DEC
	Southern flounder			COMMON	X	X	X	X	X	X	X	X	X	X	X	X	-	-	-	JAN-DEC	JAN-DEC
	Spot			HIGHLY-ABUNDANT			X	X	X	X	X	X	X	X	X		-	-	-	MAR-OCT	MAR-NOV
	Spotted seatrout			COMMON	X	X	X	X	X	X	X	X	X	X	X	X	APR-OCT	APR-OCT	APR-OCT	OCT-NOV	JAN-DEC
	Star drum			-	X	X	X	X	X	X	X	X	X	X	X	X	-	-	-	-	-
	Striped mullet			COMMON	X	X	X	X	X	X	X	X	X	X	X	X	-	-	-	JAN-DEC	JAN-DEC
	Tarpon			RARE			X	X	X	X	X	X	X	X	X		-	-	-	MAR-NOV	-
	White mullet			COMMON						X	X	X	X				-	-	-	JUN-SEP	-
	Gulf killifish			COMMON	X	X	X	X	X	X	X	X	X	X	X	X	MAR-SEP	MAR-SEP	MAR-OCT	JAN-DEC	JAN-DEC
	Silver perch			RARE	X	X	X	X	X	X	X	X	X	X	X	X	MAY-SEP	MAY-SEP	MAY-SEP	OCT-NOV	JAN-DEC
	Silversides			COMMON	X	X	X	X	X	X	X	X	X	X	X	X	MAR-AUG	MAR-AUG	MAR-AUG	JAN-DEC	JAN-DEC
	Alligator gar			COMMON	X	X	X	X	X	X	X	X	X	X	X	X	-	-	-	JAN-DEC	JAN-DEC
	Spotted gar			ABUNDANT	X	X	X	X	X	X	X	X	X	X	X	X	APR-MAY	APR-MAY	-	JAN-DEC	JAN-DEC
	Atlantic spadefish			RARE							X	X	X	X			-	-	-	JUL-OCT	-
	Bay whiff			RARE	X	X	X	X	X	X	X	X	X	X	X	X	-	-	-	JUL-AUG	JAN-DEC
	Spotfin mojarra			RARE								X	X				-	-	-	-	-
	Atlantic bumper			RARE								X	X				-	-	-	-	AUG-SEP
	Creville jack			COMMON						X	X	X					-	-	-	JUN-AUG	-
	Spanish mackerel			COMMON									X	X			-	-	-	SEP-OCT	SEP-OCT
0489	Gizzard shad			ABUNDANT	X	X	X	X	X	X	X	X	X	X	X	X	-	-	-	-	JAN-DEC
	Atlantic croaker			HIGHLY-ABUNDANT	X	X	X	X	X	X	X	X	X	X	X	X	-	-	JAN-JUN	JAN-DEC	JAN-DEC
	Bay anchovy			COMMON	X	X	X	X	X	X	X	X	X	X	X	X	MAR-NOV	MAR-NOV	MAR-NOV	JAN-DEC	JAN-DEC
	Black drum			COMMON	X	X	X	X	X	X	X	X	X	X	X	X	-	-	-	JAN-DEC	JAN-DEC
	Bull shark			COMMON	X	X	X	X	X	X	X	X	X	X	X	X	-	MAY-AUG	MAY-AUG	APR-NOV	JAN-DEC
	Gafftopsail catfish			ABUNDANT				X	X	X	X	X	X	X			APR-MAY	-	-	APR-OCT	APR-OCT
	Gulf menhaden			ABUNDANT	X	X	X	X	X	X	X	X	X	X	X	X	-	-	-	JAN-DEC	APR-DEC
	Hardhead catfish			ABUNDANT	X	X	X	X	X	X	X	X	X	X	X	X	MAY-AUG	MAY-SEP	MAY-SEP	JUN-SEP	JAN-DEC
	Pinfish			RARE				X	X	X	X	X	X	X			-	-	-	APR-OCT	APR-OCT
	Red drum			COMMON	X	X	X	X	X	X	X	X	X	X	X	X	-	-	-	JAN-DEC	JAN-DEC
	Sand seatrout			COMMON	X	X	X	X	X	X	X	X	X	X	X	X	-	-	-	JAN-DEC	JAN-DEC
	Sheepshead			COMMON	X	X	X	X	X	X	X	X	X	X	X	X	-	-	-	DEC-FEB	JAN-DEC
	Southern flounder			COMMON	X	X	X	X	X	X	X	X	X	X	X	X	-	-	-	JAN-DEC	JAN-DEC
	Spot			HIGHLY-ABUNDANT			X	X	X	X	X	X	X	X	X		-	-	-	MAR-OCT	MAR-NOV
	Spotted seatrout			COMMON	X	X	X	X	X	X	X	X	X	X	X	X	APR-OCT	APR-OCT	APR-OCT	OCT-NOV	JAN-DEC
	Star drum			-	X	X	X	X	X	X	X	X	X	X	X	X	-	-	-	-	-
	Striped mullet			COMMON	X	X	X	X	X	X	X	X	X	X	X	X	-	-	-	JAN-DEC	JAN-DEC
	Tarpon			RARE			X	X	X	X	X	X	X	X	X		-	-	-	MAR-NOV	-
	White mullet			COMMON						X	X	X	X				-	-	-	JUN-SEP	-
	Gulf killifish			COMMON	X	X	X	X	X	X	X	X	X	X	X	X	MAR-SEP	MAR-SEP	MAR-OCT	JAN-DEC	JAN-DEC
	Silver perch			RARE	X	X	X	X	X	X	X	X	X	X	X	X	MAY-SEP	MAY-SEP	MAY-SEP	OCT-NOV	JAN-DEC
	Silversides			COMMON	X	X	X	X	X	X	X	X	X	X	X	X	MAR-AUG	MAR-AUG	MAR-AUG	JAN-DEC	JAN-DEC
	Alligator gar			COMMON	X	X	X	X	X	X	X	X	X	X	X	X	-	-	-	JAN-DEC	JAN-DEC
	Spotted gar			ABUNDANT	X	X	X	X	X	X	X	X	X	X	X	X	APR-MAY	APR-MAY	-	JAN-DEC	JAN-DEC
	Atlantic spadefish			RARE							X	X	X	X			-	-	-	JUL-OCT	-
	Bay whiff			RARE	X	X	X	X	X	X	X	X	X	X	X	X	-	-	-	JUL-AUG	JAN-DEC
	Spotfin mojarra			RARE								X	X				-	-	-	-	-
	Atlantic bumper			RARE								X	X				-	-	-	-	AUG-SEP
	Creville jack			COMMON						X	X	X					-	-	-	JUN-AUG	-
	Spanish mackerel			COMMON									X	X			-	-	-	SEP-OCT	SEP-OCT

## Invertebrate

RARNUM	NAME	S F	T E	CONC	J	F	M	A	M	J	J	A	S	O	N	D	Spawning	Eggs	Larvae	Juveniles	Adults
0682	Atlantic rangia			ABUNDANT	X	X	X	X	X	X	X	X	X	X	X	X	MAR-OCT	-	MAR-OCT	JAN-DEC	JAN-DEC
	Blue crab			ABUNDANT	X	X	X	X	X	X	X	X	X	X	X	X	MAR-NOV	-	MAR-NOV	JAN-DEC	JAN-DEC
	Brown shrimp			ABUNDANT			X	X	X	X	X	X	X	X	X	X	-	-	MAR-APR	APR-DEC	-
	Grass shrimp			COMMON	X	X	X	X	X	X	X	X	X	X	X	X	JAN-DEC	JAN-DEC	JAN-DEC	JAN-DEC	JAN-DEC
	White shrimp			HIGHLY-ABUNDANT	X	X	X	X	X	X	X	X	X	X	X	X	-	-	MAY-JUN	APR-DEC	MAR-JAN

## Marine Mammal

RARNUM	NAME	S F	T E	CONC	J	F	M	A	M	J	J	A	S	O	N	D	Mating	Calving	Pupping	Molting
0739	West Indian manatee	S/F	E/E	VERY-RARE						X	X	X					-	-	-	-

## Reptile

RARNUM	NAME	S F	T E	CONC	J	F	M	A	M	J	J	A	S	O	N	D	Nesting	Hatching	Interesting	Juveniles	Adults
0761	Kemp's ridley sea turtle	S/F	E/E	COMMON				X	X	X	X	X	X	X	X		-	-	-	APR-NOV	-

## Terrestrial Mammal

RARNUM	NAME	S F	T E	CONC	J	F	M	A	M	J	J	A	S	O	N	D	Nesting
0797	Northern river otter			-			X	X	X	X	X	X	X	X	X	X	N/A
0802	Northern river otter			-			X	X	X	X	X	X	X	X	X	X	N/A

## Human Use Resources

Boat Ramp	RARNUM	NAME	CONTACT	CONTACT I NFO
	2013	Bailey's Fish Camp		orangeneches@baileys
	2014	Rainbow Marina		jeffersonneches@rainbowmarina
Facility	RARNUM	NAME	CONTACT	CONTACT I NFO
	1058	SeaTex Marine Services, Inc	Ryan Ancelet	409-724-7288
	1059	Carotex, Inc.	Ricky Bell	409-962-0251
	1061	Marine Fueling Service, Inc.	Christopher Bean	409-962-8424
	1062	Reagent Chemical & Research	Brian Skeuse	1-800-231-1807
	1064	Ecoserv, LLC-Port Arthur	Byron Parsley	409-963-3509
	1065	Tubal-Cain Gas Free Services, Inc & Tubal-Cain Marine Services, Inc	Randy Cooper	409-962-8800
Water Intake	RARNUM	NAME	CONTACT	CONTACT I NFO
	4017	GULF STATES UTILITIES CO.		

1. Incident Name	2. Operational Period (Date/Time)	Assignment List ICS 204-OS
------------------	-----------------------------------	----------------------------

3. Branch	4. Division/Group
-----------	-------------------

5. Operations Personnel	Operations Section Chief _____
Branch Director	_____
Division/Group Supervisor	_____

6. Resources Assigned This Period "X" Indicates 204a attachment with special instructions

Resource Identifier	Leader	Contact Info #	# of Persons	Reporting Info/Notes/Remarks

7. Assignments
----------------

**SAFETY NOTE:** Submerged structures next to bridge.

8. Site Number: 17-A	9. Quad Name West Of Greens Bayou	10. NOAA Chart # 11343	11. GLO Atlas Page # 17	12. County Jefferson
-------------------------	--------------------------------------	---------------------------	----------------------------	-------------------------

13. Site Information: <b>17-A</b> Site 17-A is the canal that leads to Rainbow Marina. This canal is located at the base of the South end of the Rainbow Bridge on the West bank of the Neches River. This site is approximately 1.25 miles from the point where the Neches River empties into Sabine Lake. Recreational boats, shrimp vessels and waterfront homes are located at this site. Ancelet Marina 409-962-5098. Total Petrochemical, Inc. 409-963-6800.	14. Latitude From: <b>N 29°58'39.73"</b>	To:	15. Longitude From: <b>W 93°52'20.61"</b>	To:
---	---	-----	--	-----

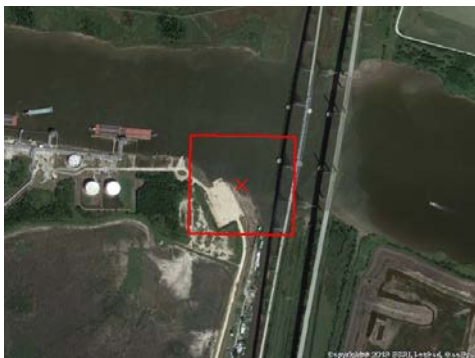
16. Closest Boat Ramp Rainbow Marina	17. Distance From Ramp 0.5 mi	18. Boat Type Flat Bottom Boat
---	----------------------------------	-----------------------------------

19. Directions From Local Sector To reach Rainbow Marina you would take Hwy 69/96 South to Hwy 73 East. Exit off Hwy 73 East, to the Right, immediately before you reach the <b>Veteran's Memorial Bridge. Travel underneath the Veteran's Memorial Bridge. Rainbow Marina is located near the base of the Rainbow Bridge on Hwy 73 West.</b>	20. Closest Airport Jefferson County	21. Closest Helo Spot Jefferson County
--	---	---

22. Trustee/Contact Numbers USCG: (409) 723-6509 RRC: (713)869-5001 USCG DUTY: (409) 719-1597 TPWD: (409)892-8666 TGLO: (800) 832-8224 NRDA: (512) 463 -9309 TCEQ: (409)781-9330 USFWS: (281) 286-8282	23. Resources at Risk Atlas Priority Low Environmental N/A Economic Recreational and Commercial	24. Width of inlet 250 ft. in ft. 25. Water depth in ft. 10 ft. 26. Current Medium 27. No. of Personnel 4
--	--	--

25. Booming Strategy Recommendation Boom should be configured in an exclusion pattern as to prevent oil from entering cuts. Bring sufficient anchors and rope to accomplish task.
--

AERIAL PHOTO



ON SITE PHOTO



29. Prepared By:	30. Reviewed by (PSC)	31. Reviewed by (OSC):
Assignment List	ICS 204 OS (Geographic Response Plan)	Project Updated:

"Response strategies may need to be modified to account for changes due to seasonality, weather conditions, spill characteristics, tides and any other considerations."

1. Incident Name	2. Operational Period (Date/Time)	Assignment List ICS 204-OS
------------------	-----------------------------------	----------------------------

3. Branch	4. Division/Group
-----------	-------------------

5. Operations Personnel	
Operations Section Chief	_____
Branch Director	_____
Division/Group Supervisor	_____

6. Resources Assigned This Period "X" Indicates 204a attachment with special instructions

Resource Identifier	Leader	Contact Info #	# of Persons	Reporting Info/Notes/Remarks

7. Assignments
----------------

**SAFETY NOTE:** Strong currents are present in this area, shallow near bridge, submerged structures present

8. Site Number: 17-B	9. Quad Name West Of Greens Bayou	10. NOAA Chart # 11343	11. GLO Atlas Page # 17	12. County Orange
-------------------------	--------------------------------------	---------------------------	----------------------------	----------------------

13. Site Information: <b>17-B</b> Site 17-B is the canal that runs parallel to the North side of the Rainbow Bridge and is located on the East bank of the Neches River. This site is approximately 1.25 miles North of where the Neches River empties into Sabine Lake. This canal leads to a shallow marsh surrounding the bridge. The East bank of this marsh is part of the Lower Neches Wildlife Management Area. Ancelet Marina 409-962-5098. Total Petrochemical, Inc. 409-963-6800.	14. Latitude From: <b>N 29°58'56.97"</b>	To:	15. Longitude From: <b>W 93°52'17.97"</b>	To:
--	---	-----	--	-----

16. Closest Boat Ramp Rainbow Marina	17. Distance From Ramp 0.75 mi	18. Boat Type Flat Bottom Boat
---	-----------------------------------	-----------------------------------

19. Directions From Local Sector <b>To reach Rainbow Marina take Hwy 69/96 South to Hwy 73 East. Exit off Hwy 73 East, to the Right, immediately before you reach the Veteran's Memorial Bridge. Travel underneath the Veteran's Memorial Bridge. Rainbow Marina is located near the base of the Rainbow Bridge on Hwy 73 West</b>	20. Closest Airport Jefferson County	21. Closest Helo Spot Jefferson County
---	---	---

22. Trustee/Contact Numbers USCG: (409) 723-6509 RRC: (713)869-5001 USCG DUTY: (409) 719-1597 TPWD: (409)892-8666 TGLO: (800) 832-8224 NRDA: (512) 463 -9309 TCEQ: (409)781-9330 USFWS: (281) 286-8282	23. Resources at Risk Atlas Priority High Environmental Habitat for wading birds, waterfowl, alligator, fish, crab and shrimp. Economic Recreational and Commercial	24. Width of inlet 300 ft. in ft. 25. Water depth in ft. 5 ft. 26. Current Fast 27. No. of Personnel 4
--	--	---

25. Booming Strategy Recommendation Boom should be configured in an exclusion pattern as to prevent oil from entering cuts. Bring sufficient anchors and rope to accomplish task.
--



29. Prepared By:	30. Reviewed by (PSC)	31. Reviewed by (OSC):
Assignment List	ICS 204 OS (Geographic Response Plan)	Project Updated:

"Response strategies may need to be modified to account for changes due to seasonality, weather conditions, spill characteristics, tides and any other considerations."



1. Incident Name	2. Operational Period (Date/Time)	Assignment List ICS 204-OS
------------------	-----------------------------------	----------------------------

3. Branch	4. Division/Group
-----------	-------------------

5. Operations Personnel	
Operations Section Chief	_____
Branch Director	_____
Division/Group Supervisor	_____

6. Resources Assigned This Period "X" Indicates 204a attachment with special instructions

Resource Identifier	Leader	Contact Info #	# of Persons	Reporting Info/Notes/Remarks

7. Assignments

**SAFETY NOTE:** Shallow, unmarked submerged objects

8. Site Number: 17-C	9. Quad Name West Of Greens Bayou	10. NOAA Chart # 11342	11. GLO Atlas Page # 17	12. County Orange
-------------------------	--------------------------------------	---------------------------	----------------------------	----------------------

13. Site Information: <b>17-C</b> Site 17-C is a shallow inlet inside Old River Cove and on the Northeast side of Humble Island. This inlet leads to a culvert located approximately 100 yards East of the Veteran's Memorial Bridge. Lower Neches Wildlife Management Area signs are posted at the mouth of this inlet. There is road access to this site from Hwy 73. Heading toward Bridge City you would take the first Right turn immediately after the Veteran's Memorial Bridge. Ancelet Marina 409-962-5098. Total Petrochemical, Inc. 409-963-6800. EntergyTexas 409-734-3204.	14. Latitude From: <b>N 29°59'24.89"</b>	To:	15. Longitude From: <b>W 93°51'59.20"</b>	To:
--	---	-----	--	-----

16. Closest Boat Ramp Rainbow Marina	17. Distance From Ramp 4.75 mi	18. Boat Type Flat Bottom Boat
---	-----------------------------------	-----------------------------------

19. Directions From Local Sector To reach Rainbow Marina you would take Hwy 69/96 South to Hwy 73 East. Exit off Hwy 73 East, to the Right, immediately before you reach the Veteran's Memorial Bridge. Travel underneath the Veteran's Memorial Bridge. Rainbow Marina is located near the base of the Rainbow Bridge on Hwy 73 West.	20. Closest Airport Jefferson County	21. Closest Helo Spot Jefferson County
---	---	---

22. Trustee/Contact Numbers USCG: (409) 723-6509    RRC: (713)869-5001 USCG DUTY: (409) 719-1597    TPWD: (409)892-8666 TGLO: (800) 832-8224    NRDA: (512) 463 -9309 TCEQ: (409)781-9330    USFWS: (281) 286-8282	23. Resources at Risk Atlas Priority    Medium  Environmental    Wetlands, habitat for wading birds, waterfowl, alligator, fish, crab and shrimp  Economic    Commercial and Recreational	24. Width of inlet    300 ft. in ft. 25. Water depth in ft.    2 ft. 26. Current    Medium 27. No. of Personnel    2
--	--	---

25. Booming Strategy Recommendation  
 Boom should be configured in an exclusion pattern as to prevent oil from entering cuts. Bring sufficient anchors and rope to accomplish task.



29. Prepared By:	30. Reviewed by (PSC)	31. Reviewed by (OSC):
Assignment List	ICS 204 OS (Geographic Response Plan)	Project Updated:

"Response strategies may need to be modified to account for changes due to seasonality, weather conditions, spill characteristics, tides and any other considerations."

1. Incident Name	2. Operational Period (Date/Time)	Assignment List ICS 204-OS
------------------	-----------------------------------	----------------------------

3. Branch	4. Division/Group
-----------	-------------------

5. Operations Personnel	
Operations Section Chief	_____
Branch Director	_____
Division/Group Supervisor	_____

6. Resources Assigned This Period "X" Indicates 204a attachment with special instructions

Resource Identifier	Leader	Contact Info #	# of Persons	Reporting Info/Notes/Remarks

7. Assignments
----------------

**SAFETY NOTE:** Shallow, unmarked submerged objects

8. Site Number: 17-D	9. Quad Name West Of Greens Bayou	10. NOAA Chart # 11342	11. GLO Atlas Page # 17	12. County Orange
-------------------------	--------------------------------------	---------------------------	----------------------------	----------------------

13. Site Information: <b>17-D</b> Site 17-D is the Entergy intake canal. It is located at the North end of Old River Cove. The Northeast bank of the canal is the Lower Neches Wildlife Management Area. There is a levee road on the Wildlife Management Area that could provide possible access to the canal. Entergy Texas 409-734-3204.	14. Latitude From: <b>N 29°59'25</b>	To:	
	15. Longitude From: <b>W 93°51'25</b>	To:	

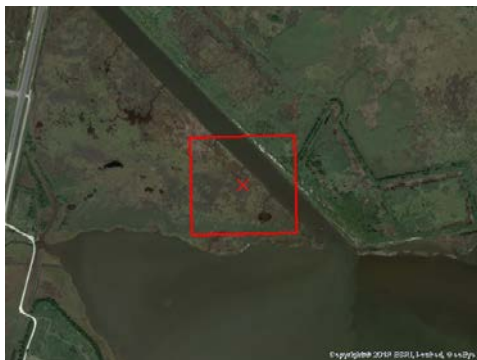
16. Closest Boat Ramp Rainbow Marina	17. Distance From Ramp 4.25 mi	18. Boat Type Flat Bottom Boat
---	-----------------------------------	-----------------------------------

19. Directions From Local Sector To reach Rainbow Marina you would take Hwy 69/96 South to Hwy 73 East. Exit off Hwy 73 East, to the Right, immediately before you reach the <b>Veteran's Memorial Bridge. Travel underneath the Veteran's Memorial Bridge. Rainbow Marina is located near the base of the Rainbow Bridge on Hwy 73 West.</b>	20. Closest Airport Jefferson County
	21. Closest Helo Spot Jefferson County

22. Trustee/Contact Numbers	23. Resources at Risk	24. Width of inlet 300 ft. in ft.
USCG: (409) 723-6509 RRC: (713) 869-5001	Atlas Priority High	25. Water depth in ft. 2 ft.
USCG DUTY: (409) 719-1597 TPWD: (409) 892-8666	Environmental Wetlands, habitat for wading birds, waterfowl, alligator, fish, crab and shrimp	26. Current Fast
TGLO: (800) 832-8224 NRDA: (512) 463 -9309	Economic Commercial and Recreational	27. No. of Personnel 2
TCEQ: (409) 781-9330 USFWS: (281) 286-8282		

25. Booming Strategy Recommendation Boom should be configured in an exclusion pattern as to prevent oil from entering cuts. Bring sufficient anchors and rope to accomplish task.
--

AERIAL PHOTO



ON SITE PHOTO



29. Prepared By:	30. Reviewed by (PSC)	31. Reviewed by (OSC):
Assignment List	ICS 204 OS (Geographic Response Plan)	Project Updated:

"Response strategies may need to be modified to account for changes due to seasonality, weather conditions, spill characteristics, tides and any other considerations."



1. Incident Name	2. Operational Period (Date/Time)	Assignment List ICS 204-OS
------------------	-----------------------------------	----------------------------

3. Branch	4. Division/Group
-----------	-------------------

5. Operations Personnel	
Operations Section Chief	_____
Branch Director	_____
Division/Group Supervisor	_____

6. Resources Assigned This Period "X" Indicates 204a attachment with special instructions

Resource Identifier	Leader	Contact Info #	# of Persons	Reporting Info/Notes/Remarks

7. Assignments
----------------

**SAFETY NOTE:** Shallow, unmarked submerged objects.

8. Site Number: 17-E	9. Quad Name West Of Greens Bayou	10. NOAA Chart # 11342	11. GLO Atlas Page # 17	12. County Orange
-------------------------	--------------------------------------	---------------------------	----------------------------	----------------------

13. Site Information: <b>17-E</b> Site 17-E consists of one main canal and multi rip/rap lined inlets that merge together and form a canal leading into the Lower Neches Wildlife Management Area. This canal is on the North side of Old River Cove and runs parallel to the road to Bailey's Fish Camp (Lake Street). Entergy Texas 409-734-3204.	14. Latitude From: N 29°59'23.06"	To:	
	15. Longitude From: W 93°51'01.74"	To:	

16. Closest Boat Ramp Rainbow Marina	17. Distance From Ramp 4 mi	18. Boat Type Flat Bottom Boat
---	--------------------------------	-----------------------------------

19. Directions From Local Sector To reach Rainbow Marina you would take Hwy 69/96 South to Hwy 73 East. Exit off Hwy 73 East, to the Right, immediately before you reach the Veteran's Memorial Bridge. Travel underneath the Veteran's Memorial Bridge. Rainbow Marina is located near the base of the Rainbow Bridge on Hwy 73 West.	20. Closest Airport Jefferson County
	21. Closest Helo Spot Jefferson County

22. Trustee/Contact Numbers	23. Resources at Risk	24. Width of inlet Main 150' 50' for the others in ft.
USCG: (409) 723-6509 RRC: (713)869-5001	Atlas Priority High	25. Water depth in ft. 2 ft.
USCG DUTY: (409) 719-1597 TPWD: (409)892-8666	Environmental Wetlands, habitat for wading birds, waterfowl, alligator, fish, crab and shrimp	26. Current Medium
TGLO: (800) 832-8224 NRDA: (512) 463 -9309	Economic Recreational	27. No. of Personnel 2
TCEQ: (409)781-9330 USFWS: (281) 286-8282		

25. Booming Strategy Recommendation Boom should be configured in an exclusion pattern as to prevent oil from entering cuts. Bring sufficient anchors and rope to accomplish task.
--

AERIAL PHOTO



ON SITE PHOTO



29. Prepared By:	30. Reviewed by (PSC)	31. Reviewed by (OSC):
Assignment List	ICS 204 OS (Geographic Response Plan)	Project Updated:

"Response strategies may need to be modified to account for changes due to seasonality, weather conditions, spill characteristics, tides and any other considerations."

1. Incident Name	2. Operational Period (Date/Time)	Assignment List ICS 204-OS
------------------	-----------------------------------	----------------------------

3. Branch	4. Division/Group
-----------	-------------------

5. Operations Personnel	
Operations Section Chief	_____
Branch Director	_____
Division/Group Supervisor	_____

6. Resources Assigned This Period "X" Indicates 204a attachment with special instructions

Resource Identifier	Leader	Contact Info #	# of Persons	Reporting Info/Notes/Remarks

7. Assignments

**SAFETY NOTE:** Shallow, submerged objects not marked.

8. Site Number: 17-F	9. Quad Name West Of Greens Bayou	10. NOAA Chart # 11342	11. GLO Atlas Page # 17	12. County Orange
-------------------------	--------------------------------------	---------------------------	----------------------------	----------------------

13. Site Information: <b>17-F</b> Site 17-F is the mouth of Old River Bayou. This site is located on the Northeast side of Old River Cove. To get to site take Hwy 73 East into Bridge City. The first red light is Lake St. Take a Right on Lake St. and site is at the end of that road.		14. Latitude From: <b>N 29°59'14.74"</b>	To:
		15. Longitude From: <b>W 93°50'44.25"</b>	To:

16. Closest Boat Ramp Rainbow Marina	17. Distance From Ramp 3.75 mi	18. Boat Type Flat Bottom Boat
---	-----------------------------------	-----------------------------------

19. Directions From Local Sector To reach Rainbow Marina you would take Hwy 69/96 South to Hwy 73 East. Exit off Hwy 73 East, to the Right, immediately before you reach the <b>Veteran's Memorial Bridge. Travel underneath the Veteran's Memorial Bridge. Rainbow Marina is located near the base of the Rainbow Bridge on Hwy 73 West.</b>		20. Closest Airport Jefferson County	
		21. Closest Helo Spot Jefferson County	

22. Trustee/Contact Numbers	23. Resources at Risk	24. Width of inlet 300 ft. in ft.
USCG: (409) 723-6509 RRC: (713)869-5001	Atlas Priority High	25. Water depth in ft. 2 ft.
USCG DUTY: (409) 719-1597 TPWD: (409)892-8666	Environmental Wetlands, habitat for wading birds, waterfowl, alligator, fish, crab and shrimp.	
TGLO: (800) 832-8224 NRDA: (512) 463 -9309	Economic Recreational	26. Current Medium
TCEQ: (409)781-9330 USFWS: (281) 286-8282		27. No. of Personnel 2

25. Booming Strategy Recommendation  
Boom should be configured in an exclusion pattern as to prevent oil from entering cuts. Bring sufficient anchors and rope to accomplish task



29. Prepared By:	30. Reviewed by (PSC)	31. Reviewed by (OSC):
Assignment List	ICS 204 OS (Geographic Response Plan)	Project Updated:

"Response strategies may need to be modified to account for changes due to seasonality, weather conditions, spill characteristics, tides and any other considerations."



1. Incident Name	2. Operational Period (Date/Time)	Assignment List ICS 204-OS
------------------	-----------------------------------	----------------------------

3. Branch	4. Division/Group
-----------	-------------------

5. Operations Personnel	
Operations Section Chief	_____
Branch Director	_____
Division/Group Supervisor	_____

6. Resources Assigned This Period					"X" Indicates 204a attachment with special instructions
Resource Identifier	Leader	Contact Info #	# of Persons	Reporting Info/Notes/Remarks	

7. Assignments
----------------

**SAFETY NOTE:** Shallow, submerged objects not marked.

8. Site Number: 17-G	9. Quad Name West Of Greens Bayou	10. NOAA Chart # 11342	11. GLO Atlas Page # 17	12. County Orange
-------------------------	--------------------------------------	---------------------------	----------------------------	----------------------

13. Site Information: <b>17-G</b> Site 17-G is a long, winding inlet at the far end of Hickory Cove. A boathouse can be seen 150 yards inside of this inlet.		14. Latitude From: <b>N 29°59'55.22"</b>	To:
		15. Longitude From: <b>W 93°47'28.91"</b>	To:

16. Closest Boat Ramp Rainbow Marina	17. Distance From Ramp 6.5 mi	18. Boat Type Flat Bottom Boat
---	----------------------------------	-----------------------------------

19. Directions From Local Sector To reach Rainbow Marina you would take Hwy 69/96 South to Hwy 73 East. Exit off Hwy 73 East, to the Right, immediately before you reach the <b>Veteran's Memorial Bridge. Travel underneath the Veteran's Memorial Bridge. Rainbow Marina is located near the base of the Rainbow Bridge on Hwy 73 West.</b>		20. Closest Airport Jefferson County	
		21. Closest Helo Spot Jefferson County	

22. Trustee/Contact Numbers	23. Resources at Risk	24. Width of inlet 60 ft. in ft.
USCG: (409) 723-6509 RRC: (713)869-5001	Atlas Priority Medium	25. Water depth in ft. 2 ft.
USCG DUTY: (409) 719-1597 TPWD: (409)892-8666	Environmental Wetlands, habitat for wading birds, waterfowl, alligator, fish, crab and shrimp.	
TGLO: (800) 832-8224 NRDA: (512) 463 -9309	Economic Recreational	26. Current Medium
TCEQ: (409)781-9330 USFWS: (281) 286-8282		27. No. of Personnel 2

25. Booming Strategy Recommendation Boom should be configured in an exclusion pattern as to prevent oil from entering cuts. Bring sufficient anchors and rope to accomplish task
---

AERIAL PHOTO



ON SITE PHOTO



29. Prepared By:	30. Reviewed by (PSC)	31. Reviewed by (OSC):
Assignment List	ICS 204 OS (Geographic Response Plan)	Project Updated:

"Response strategies may need to be modified to account for changes due to seasonality, weather conditions, spill characteristics, tides and any other considerations."

1. Incident Name	2. Operational Period (Date/Time)	Assignment List ICS 204-OS
------------------	-----------------------------------	----------------------------

3. Branch	4. Division/Group
-----------	-------------------

5. Operations Personnel	
Operations Section Chief	_____
Branch Director	_____
Division/Group Supervisor	_____

6. Resources Assigned This Period "X" Indicates 204a attachment with special instructions

Resource Identifier	Leader	Contact Info #	# of Persons	Reporting Info/Notes/Remarks

7. Assignments

**SAFETY NOTE:** Shallow

8. Site Number: 17-H	9. Quad Name West Of Greens Bayou	10. NOAA Chart # 11342	11. GLO Atlas Page # 17	12. County Orange
-------------------------	--------------------------------------	---------------------------	----------------------------	----------------------

13. Site Information: 17-H Site 17-H is a small inlet at the very tip of Hickory Cove. This inlet feeds into a fairly sensitive area.	14. Latitude From: N 29°59'57.30"	To:
	15. Longitude From: W 93°47'23.57"	To:

16. Closest Boat Ramp Rainbow Marina	17. Distance From Ramp 6.5 mi	18. Boat Type Flat Bottom Boat
---	----------------------------------	-----------------------------------

19. Directions From Local Sector To reach Rainbow Marina take Hwy 69/96 South to Hwy 73 East. Exit off Hwy 73 East, to the Right, immediately before you reach the Veteran's Memorial Bridge. Travel underneath the Veteran's Memorial Bridge. Rainbow Marina is located near the base of the Rainbow Bridge on Hwy 73 West.	20. Closest Airport Jefferson County
	21. Closest Helo Spot Jefferson County

22. Trustee/Contact Numbers	23. Resources at Risk	24. Width of inlet 100 ft. in ft.
USCG: (409) 723-6509 RRC: (713)869-5001	Atlas Priority Medium	25. Water depth in ft. 2 ft.
USCG DUTY: (409) 719-1597 TPWD: (409)892-8666	Environmental Wetlands, habitat for wading birds, waterfowl, alligator, fish, crab and shrimp.	26. Current Medium
TGLO: (800) 832-8224 NRDA: (512) 463 -9309	Economic Recreational	27. No. of Personnel 2
TCEQ: (409)781-9330 USFWS: (281) 286-8282		

25. Booming Strategy Recommendation  
Boom should be configured in an exclusion pattern as to prevent oil from entering cuts. Bring sufficient anchors and rope to accomplish task.



29. Prepared By:	30. Reviewed by (PSC)	31. Reviewed by (OSC):
Assignment List	ICS 204 OS (Geographic Response Plan)	Project Updated:

"Response strategies may need to be modified to account for changes due to seasonality, weather conditions, spill characteristics, tides and any other considerations."



1. Incident Name	2. Operational Period (Date/Time)	Assignment List ICS 204-OS
------------------	-----------------------------------	----------------------------

3. Branch	4. Division/Group
-----------	-------------------

5. Operations Personnel	
Operations Section Chief	_____
Branch Director	_____
Division/Group Supervisor	_____

6. Resources Assigned This Period "X" Indicates 204a attachment with special instructions

Resource Identifier	Leader	Contact Info #	# of Persons	Reporting Info/Notes/Remarks

7. Assignments

**SAFETY NOTE:** Shallow, submerged objects not marked

8. Site Number: 17-1	9. Quad Name West Of Greens Bayou	10. NOAA Chart # 11342	11. GLO Atlas Page # 17	12. County Orange
-------------------------	--------------------------------------	---------------------------	----------------------------	----------------------

13. Site Information: <b>17-1</b> Site 17-1 is a small cove on the West side of Hickory Cove. The cove leads back to an open culvert that runs under a washed out road. A small pier is located a few hundred feet Northeast of this site. This road and pier can be accessed from the B.M. Odom Estate on East Round Bunch Rd in Bridge City.	14. Latitude From: <b>N 29°59'50.80"</b>	To:	
	15. Longitude From: <b>W 93°47'45.20"</b>	To:	

16. Closest Boat Ramp Rainbow Marina	17. Distance From Ramp 6.5 mi	18. Boat Type Flat Bottom Boat
---	----------------------------------	-----------------------------------

19. Directions From Local Sector <b>To reach Rainbow Marina take Hwy 69/96 South to Hwy 73 East. Exit off Hwy 73 East, to the Right, immediately before you reach the Veteran's Memorial Bridge. Travel underneath the Veteran's Memorial Bridge. Rainbow Marina is located near the base of the Rainbow Bridge on Hwy 73 West.</b>	20. Closest Airport Jefferson County
	21. Closest Helo Spot Jefferson County

22. Trustee/Contact Numbers USCG: (409) 723-6509    RRC: (713)869-5001 USCG DUTY: (409) 719-1597    TPWD: (409)892-8666 TGLO: (800) 832-8224    NRDA: (512) 463 -9309 TCEQ: (409)781-9330    USFWS: (281) 286-8282	23. Resources at Risk Atlas Priority High  Environmental Wetlands, habitat for wading birds, waterfowl, alligator, fish, crab and shrimp.  Economic Recreational	24. Width of inlet 30 ft in ft. 25. Water depth in ft. 2 ft. 26. Current Medium 27. No. of Personnel 2
--	---	---

25. Booming Strategy Recommendation  
 Boom should be configured in an exclusion pattern as to prevent oil from entering cuts. Bring sufficient anchors and rope to accomplish task.

AERIAL PHOTO



ON SITE PHOTO



29. Prepared By:	30. Reviewed by (PSC)	31. Reviewed by (OSC):
Assignment List	ICS 204 OS (Geographic Response Plan)	Project Updated:

"Response strategies may need to be modified to account for changes due to seasonality, weather conditions, spill characteristics, tides and any other considerations."

1. Incident Name	2. Operational Period (Date/Time)	Assignment List ICS 204-OS
------------------	-----------------------------------	----------------------------

3. Branch	4. Division/Group
-----------	-------------------

5. Operations Personnel Operations Section Chief _____ Branch Director _____ Division/Group Supervisor _____
---

6. Resources Assigned This Period <span style="float: right;">"X" Indicates 204a attachment with special instructions</span>					
Resource Identifier	Leader	Contact Info #	# of Persons	Reporting Info/Notes/Remarks	

7. Assignments
----------------

**SAFETY NOTE:** Shallow

8. Site Number: 17-J	9. Quad Name West Of Greens Bayou	10. NOAA Chart # 11342	11. GLO Atlas Page # 17	12. County Orange
-------------------------	--------------------------------------	---------------------------	----------------------------	----------------------

13. Site Information: 17-J Site 17-J is a fairly wide inlet that curves North and eventually leads into the inlet on Site 17-G. Site 17-J feeds a moderately sensitive marsh West of the Sabine River.	14. Latitude From: N 29°59'43.91"	To:	15. Longitude From: W 93°47'23.26"	To:
---	--------------------------------------	-----	---------------------------------------	-----

16. Closest Boat Ramp Rainbow Marina	17. Distance From Ramp 6.5 mi	18. Boat Type Flat Bottom Boat
---	----------------------------------	-----------------------------------

19. Directions From Local Sector To reach Rainbow Marina take Hwy 69/96 South to Hwy 73 East. Exit off Hwy 73 East, to the Right, immediately before you reach the Veteran's Memorial Bridge. Travel underneath the Veteran's Memorial Bridge. Rainbow Marina is located near the base of the Rainbow Bridge on Hwy 73 West	20. Closest Airport Jefferson County	21. Closest Helo Spot Jefferson County
--	---	---

22. Trustee/Contact Numbers USCG: (409) 723-6509 RRC: (713)869-5001 USCG DUTY: (409) 719-1597 TPWD: (409)892-8666 TGLO: (800) 832-8224 NRDA: (512) 463 -9309 TCEQ: (409)781-9330 USFWS: (281) 286-8282	23. Resources at Risk Atlas Priority Medium Environmental Wetlands, habitat for wading birds, waterfowl, alligator, fish, crab and shrimp Economic Recreational	24. Width of inlet 300 ft. in ft. 25. Water depth in ft. 2 ft. 26. Current Medium 27. No. of Personnel 2
--	--	---

25. Booming Strategy Recommendation Boom should be configured in an exclusion pattern as to prevent oil from entering cuts. Bring sufficient anchors and rope to accomplish task.
--

AERIAL PHOTO



ON SITE PHOTO



29. Prepared By:	30. Reviewed by (PSC)	31. Reviewed by (OSC):
Assignment List	ICS 204 OS (Geographic Response Plan)	Project Updated:

"Response strategies may need to be modified to account for changes due to seasonality, weather conditions, spill characteristics, tides and any other considerations."



1. Incident Name	2. Operational Period (Date/Time)	Assignment List ICS 204-OS
------------------	-----------------------------------	----------------------------

3. Branch	4. Division/Group
-----------	-------------------

5. Operations Personnel	
Operations Section Chief	_____
Branch Director	_____
Division/Group Supervisor	_____

6. Resources Assigned This Period						"X" Indicates 204a attachment with special instructions
Resource Identifier	Leader	Contact Info #	# of Persons	Reporting Info/Notes/Remarks		

7. Assignments
----------------

**SAFETY NOTE:** Shallow, submerged objects not marked.

8. Site Number: 17-K	9. Quad Name West Of Greens Bayou	10. NOAA Chart # 11342	11. GLO Atlas Page # 17	12. County Orange
-------------------------	--------------------------------------	---------------------------	----------------------------	----------------------

13. Site Information: <b>17-K</b> Site 17-K consists of several inlets located between Hickory Cove and the Sabine River. There are several small inlets and marsh islands within this site. The Hickory Cove side of Site 17-L on the Sabine River is included in this Site (Site 17-K). The tide level will influence how much of this site could be affected if a spill threatens this area.	14. Latitude From: <b>N 29°59'27.32"</b>	To:
	15. Longitude From: <b>W 93°47'39.71"</b>	To:

16. Closest Boat Ramp Rainbow Marina	17. Distance From Ramp 6.5 mi	18. Boat Type Flat Bottom Boat
---	----------------------------------	-----------------------------------

19. Directions From Local Sector <b>To reach Rainbow Marina take Hwy 69/96 South to Hwy 73 East. Exit off Hwy 73 East, to the Right, immediately before you reach the Veteran's Memorial Bridge. Travel underneath the Veteran's Memorial Bridge. Rainbow Marina is located near the base of the Rainbow Bridge on Hwy 73 West.</b>	20. Closest Airport Jefferson County
	21. Closest Helo Spot Jefferson County

22. Trustee/Contact Numbers	23. Resources at Risk	24. Width of inlet 150 ft. each (7 total) in ft.
USCG: (409) 723-6509 RRC: (713)869-5001	Atlas Priority Medium	25. Water depth in ft. 2 ft.
USCG DUTY: (409) 719-1597 TPWD: (409)892-8666	Environmental Wetlands, habitat for wading birds, waterfowl, alligator, fish, crab and shrimp.	26. Current Medium
TGLO: (800) 832-8224 NRDA: (512) 463 -9309	Economic Recreational	27. No. of Personnel 2
TCEQ: (409)781-9330 USFWS: (281) 286-8282		

25. Booming Strategy Recommendation Boom should be configured in an exclusion pattern as to prevent oil from entering cuts. Bring sufficient anchors and rope to accomplish task.
--



29. Prepared By:	30. Reviewed by (PSC)	31. Reviewed by (OSC):
Assignment List	ICS 204 OS (Geographic Response Plan)	Project Updated:

"Response strategies may need to be modified to account for changes due to seasonality, weather conditions, spill characteristics, tides and any other considerations."

1. Incident Name	2. Operational Period (Date/Time)	Assignment List ICS 204-OS
------------------	-----------------------------------	----------------------------

3. Branch	4. Division/Group
-----------	-------------------

5. Operations Personnel	
Operations Section Chief	_____
Branch Director	_____
Division/Group Supervisor	_____

6. Resources Assigned This Period "X" Indicates 204a attachment with special instructions

Resource Identifier	Leader	Contact Info #	# of Persons	Reporting Info/Notes/Remarks

7. Assignments
----------------

**SAFETY NOTE:** Shallow, submerged objects not marked

8. Site Number: 17-L	9. Quad Name West Of Greens Bayou	10. NOAA Chart # 11343	11. GLO Atlas Page # 17	12. County Orange
-------------------------	--------------------------------------	---------------------------	----------------------------	----------------------

13. Site Information: <b>17-L</b> Site 17-L is a narrow cut located on the West side of the Sabine River that Leads into Hickory Cove. The point Where this inlet opens into Hickory Cove is Site 17-K. This cut is located 0.5 miles from the Northeast tip of Goat Island. This cut feeds the brackish water marsh peninsula of Hickory Cove.	14. Latitude From: <b>N 29°59'38.45"</b>	To:	15. Longitude From: <b>W 93°47'06.74"</b>	To:
--	---	-----	--	-----

16. Closest Boat Ramp Rainbow Marina	17. Distance From Ramp 6.5 mi	18. Boat Type Flat Bottom Boat
---	----------------------------------	-----------------------------------

19. Directions From Local Sector <b>To reach Rainbow Marina take Hwy 69/96 South to Hwy 73 East. Exit off Hwy 73 East, to the Right, immediately before you reach the Veteran's Memorial Bridge. Travel underneath the Veteran's Memorial Bridge. Rainbow Marina is located near the base of the Rainbow Bridge on Hwy 73 West.</b>	20. Closest Airport Jefferson County
	21. Closest Helo Spot Jefferson County

22. Trustee/Contact Numbers USCG: (409) 723-6509 RRC: (713)869-5001 USCG DUTY: (409) 719-1597 TPWD: (409)892-8666 TGLO: (800) 832-8224 NRDA: (512) 463 -9309 TCEQ: (409)781-9330 USFWS: (281) 286-8282	23. Resources at Risk Atlas Priority Medium Environmental Wetlands. habitat for wading birds, waterfowl, alligator, fish, crab and shrimp Economic Recreational	24. Width of inlet 300 ft in ft. 25. Water depth in ft. 2 ft. 26. Current Medium 27. No. of Personnel 2
--	--	--

25. Booming Strategy Recommendation Boom should be configured in an exclusion pattern as to prevent oil from entering cuts. Bring sufficient anchors and rope to accomplish task.
--



29. Prepared By:	30. Reviewed by (PSC)	31. Reviewed by (OSC):
Assignment List	ICS 204 OS (Geographic Response Plan)	Project Updated:

"Response strategies may need to be modified to account for changes due to seasonality, weather conditions, spill characteristics, tides and any other considerations."



1. Incident Name	2. Operational Period (Date/Time)	Assignment List ICS 204-OS
------------------	-----------------------------------	----------------------------

3. Branch	4. Division/Group
-----------	-------------------

5. Operations Personnel	
Operations Section Chief	_____
Branch Director	_____
Division/Group Supervisor	_____

6. Resources Assigned This Period					"X" Indicates 204a attachment with special instructions
Resource Identifier	Leader	Contact Info #	# of Persons	Reporting Info/Notes/Remarks	

7. Assignments
----------------

**SAFETY NOTE:** This spoil culvert is a popular spot for recreational fishermen. Sabine Lake is very shallow near the culvert.

8. Site Number: 17-W	9. Quad Name West Of Greens Bayou	10. NOAA Chart # 11342	11. GLO Atlas Page # 17	12. County Jefferson
-------------------------	--------------------------------------	---------------------------	----------------------------	-------------------------

13. Site Information: <b>17-W</b> Site 17-W is the second spoil culvert on the North Revetment/Levee Road on Pleasure Island. This site consists of three culverts that lay side by side and are surrounded by a metal walkway or pier. This site allows water to flow to and from Sabine Lake to the North Pleasure Island marsh. Site is accessible by road.		14. Latitude From: <b>N 29°55'02.8</b>	To:
		15. Longitude From: <b>W 93°52'15.32</b>	To:

16. Closest Boat Ramp Pleasure Island Marina	17. Distance From Ramp 4.75 mi	18. Boat Type Flat Bottom Boat
---	-----------------------------------	-----------------------------------

19. Directions From Local Sector To reach Pleasure Island Marina boat launch take Hwy 69/96 South to Hwy 73 West. Exit Hwy 73 West to Hwy 82 East. Travel over the Martin Luther King Bridge to Pleasure Island. Take a Right at the stop sign onto TB Ellison Parkway. Continue through the 4-way stop sign. The Marina is on the right. Continue straight to a "T" intersection. Take a Right at the stop sign. Pleasure Island Marina boat launch is located at the end of the road.		20. Closest Airport Jefferson County	
		21. Closest Helo Spot Jefferson County	

22. Trustee/Contact Numbers	23. Resources at Risk	24. Width of inlet N/A in ft.
USCG: (409) 723-6509 RRC: (713)869-5001	Atlas Priority Medium	25. Water depth in ft. 2 ft.
USCG DUTY: (409) 719-1597 TPWD: (409)892-8666	Environmental Habitat for birds, fish, and crabs.	26. Current Medium
TGLO: (800) 832-8224 NRDA: (512) 463 -9309	Economic Recreational	27. No. of Personnel 2
TCEQ: (409)781-9330 USFWS: (281) 286-8282		

25. Booming Strategy Recommendation Damming off the 3 openings to this culvert with 2X6 boards placed into the slots provided on the metal structure and sorbent pads around the edges should insure that pollution does not enter this area.
--



29. Prepared By:	30. Reviewed by (PSC)	31. Reviewed by (OSC):
Assignment List	ICS 204 OS (Geographic Response Plan)	Project Updated:

"Response strategies may need to be modified to account for changes due to seasonality, weather conditions, spill characteristics, tides and any other considerations."