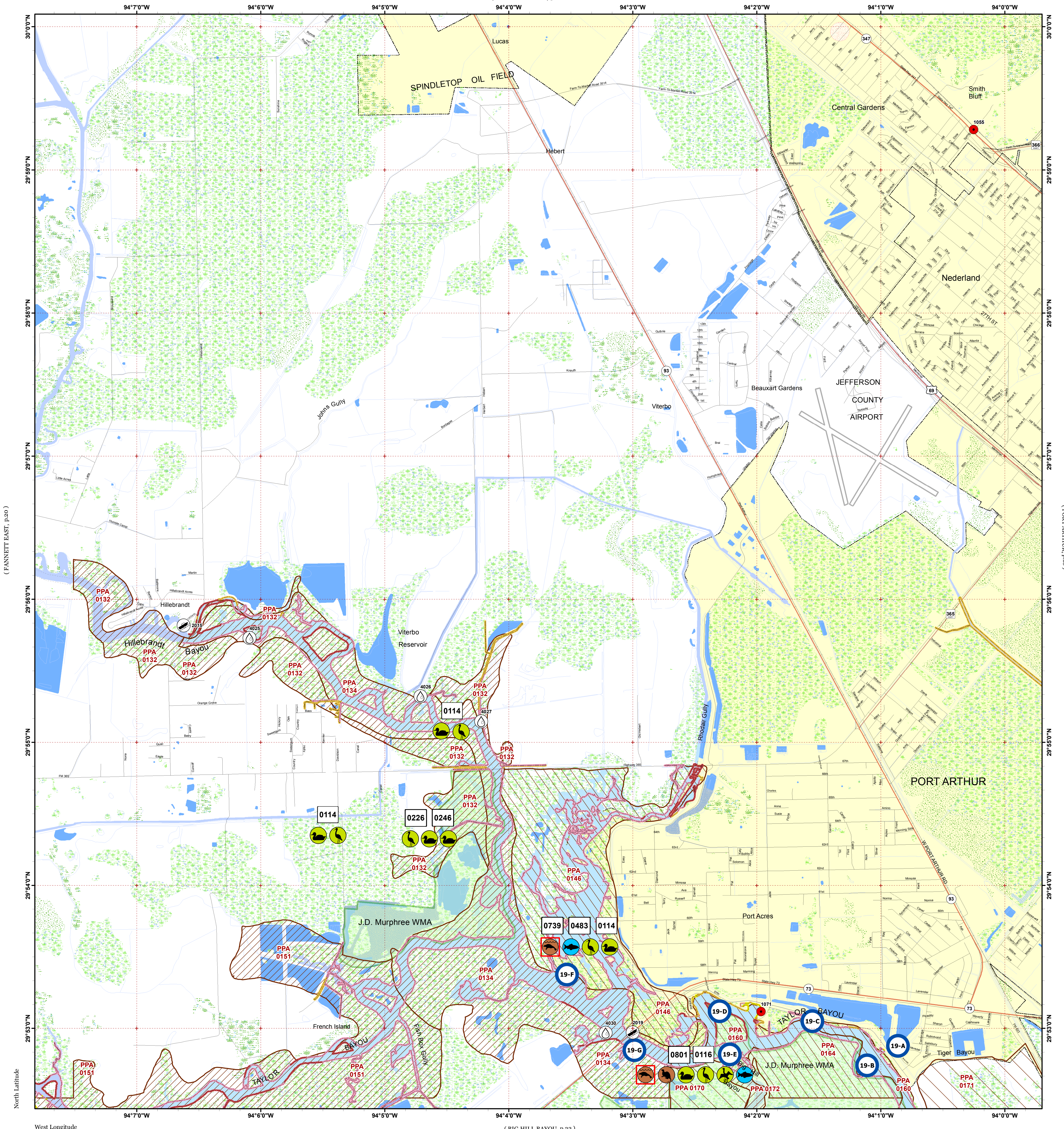


PORT ACRES

(BEAUMONT EAST, p.14)

Click Here or Scroll Down for Associated Map Data

Click on the Geographic Response Plan Target to View the ICS Form



(FANNETT EAST, p.20)

(PORT ARTHUR, p.18)

West Longitude

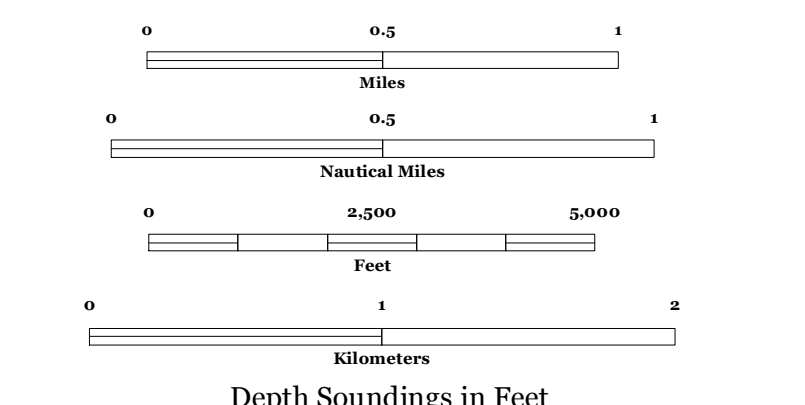
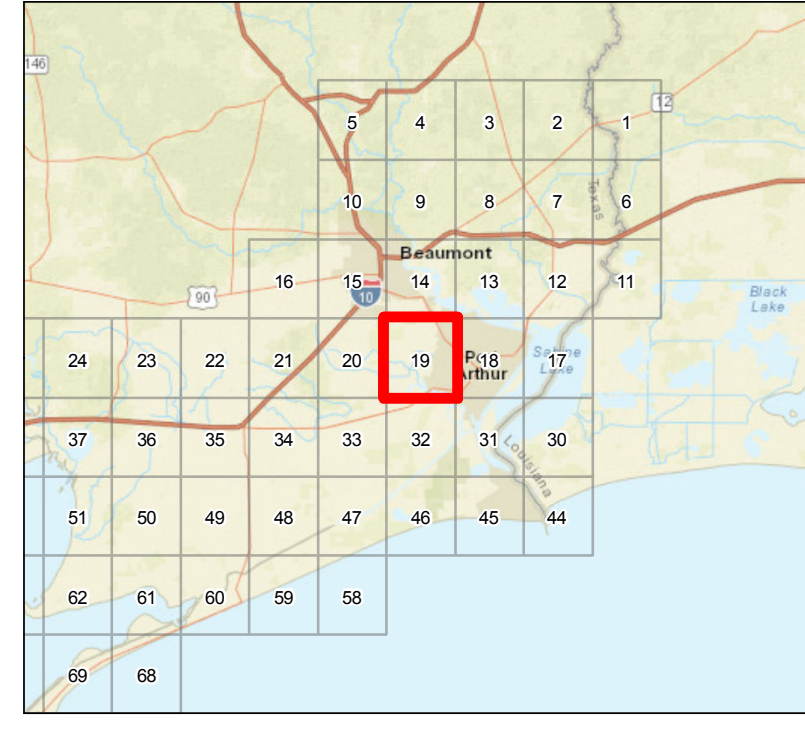
(BIG HILL BAYOU, p.32)



Oil Spill Planning and Response Atlas

2016

The Texas General Land Office makes no representations or warranties regarding the accuracy or completeness of the information depicted on this map or the data from which it was produced. This map is not suitable for navigational purposes and does not purport to depict boundaries of private and public land.



- ### Human Use Features
- Boat Ramp
 - Facility
 - Water Intake
 - Geographic Response Plan

- ### Priority Protection Areas
- HIGH
 - MEDIUM
 - LOW

- ### Map Base Layers
- County Road
 - State Highway
 - US Highway
 - Railroads
 - Airport Runways
 - Road
 - GIWW
 - State Parks/WMA's
 - Exposed Lake Shore
 - Freshwater Marshes
 - Swamps and Flooded Woodlands
 - Willow Thickets
 - Lake / Pond
 - Tidally Influenced River
 - Perennial River
 - Intermittent River
 - County Boundary
 - City Limits

- ### Species Icons Within Map Quad
- Fish
 - Diving Bird
 - Mammal T/E
 - Small Mammal
 - Wading
 - Waterfowl

- ### ENVIRONMENTAL SENSITIVITY INDEX
- 10D Mangroves and Woody Vegetation
 - 10C Freshwater Swamps
 - 10B Freshwater Marshes
 - 10A Salt and Brackish Water Marshes
 - 9 Sheltered Tidal Flats
 - 8C Sheltered Rocky/Karst Shores
 - 8D Sheltered Scarps
 - 8B Sheltered Riprap Structures
 - 8A Sheltered Solid Manmade Structures
 - 7 Exposed Tidal Flats
 - 6B Exposed Riprap Structures
 - 6A Gravel or Shell Beaches
 - 5 Mixed Sand and Gravel or Shell Beaches
 - 4 Coarse-Grained Sand Beaches
 - 3B Scarps and Steep Slopes in Sand
 - 3A Fine-Grained Sand Beaches
 - 2B Wave-Cut Clay Platforms
 - 2A Scarps and Steep Slopes in Clay
 - 1 Exposed Walls and Other Solid Structures

Quadrant: PORT ACRES

Map # :19

Biological Information for this quadrant represents known concentration areas of occurrence.

Habitat Priority Protection Areas

PPA ID	PRIORITY	POLY DESCRIPTION	BIRDS RANK	BIRDS DESCRIPTION	FISH RANK	FISH DESCRIPTION	WETLANDS RANK	WETLANDS DESCRIPTION
PPA0132	HIGH	Hillebrandt Bayou	MEDIUM	Alligator, otter	HIGH	Nursery		Bottomland hardwoods, cypress
PPA0134	HIGH	Confluence of Taylor and Hillebrandt Bayous	HIGH	Moorhen, rails, ducks, gallinules, wading birds	HIGH	Commercial trotling for catfish; recreational fishing (bass, crappie, white perch)	HIGH	Open freshwater marsh, grading into hardwood bottomland upstream
PPA0146	MEDIUM	Wetlands at confluence of Taylor and Hillebrandt Bayous	HIGH	Moorhen, rails, ducks, gallinules, wading birds	MEDIUM		HIGH	Open freshwater marsh, grading into hardwood bottomland upstream
PPA0151	HIGH	Taylor Bayou wetlands	HIGH	Moorhen, rails, ducks, gallinules, wading birds	HIGH	Commercial trotling for catfish; recreational fishing (bass, crappie, white perch)	HIGH	Open freshwater marsh, grading into hardwood bottomland upstream
PPA0160	MEDIUM	Taylor Bayou south of Port Arthur	HIGH				HIGH	
PPA0164	MEDIUM	Marsh south of Taylor Bayou	HIGH				HIGH	
PPA0170	LOW	J D Murphree Impoundment	HIGH				MEDIUM	
PPA0171	LOW	Big Hill Bayou marsh	LOW	Moorhen, mottled duck, waterfowl, herons			MEDIUM	Fresh marsh
PPA0172	HIGH	Big Hill Bayou drainage: Shallow Prong Lake, Coffee Bean Slough, Blind Lake, Cabin Lake, and Big Hill Bayou	HIGH	All species of waterfowl, wading birds, nesting mottled duck; mink, nutria, alligators	MEDIUM	Freshwater (largemouth bass, crappie)	HIGH	Largest area of freshwater marsh on Texas coast; American lotus, giant cutgrass, common reed, Maliciae, arrowheads, California bulrush

Biological Resources

Bird

RARNUM	NAME	S F	T E	CONC	J	F	M	A	M	J	J	A	S	O	N	D	Nesting	Migrating	Molting
0114	Marsh birds			-	X	X	X	X	X	X	X	X	X	X	X	X	-	-	-
	Rails			-	X	X	X	X	X	X	X	X	X	X	X	X	-	-	-
	Wading birds			-	X	X	X	X	X	X	X	X	X	X	X	X	-	-	-
	Common moorhen			-	X	X	X	X	X	X	X	X	X	X	X	X	MAR-OCT	-	-
	Dabbling ducks			-	X	X	X	X	X				X	X	X	X	-	-	-
	Purple gallinule			-				X	X	X	X	X	X				-	-	-
	Waterfowl			-	X	X	X	X	X	X	X	X	X	X	X	X	-	-	-
0116	Common loon			-	X	X	X	X	X					X	X	X	-	-	-
	Diving birds			-	X	X	X	X	X	X	X	X	X	X	X	X	-	-	-
	Wading birds			-	X	X	X	X	X	X	X	X	X	X	X	X	-	-	-
	Diving ducks			-	X	X	X	X	X				X	X	X		-	-	-
	Waterfowl			-	X	X	X	X	X	X	X	X	X	X	X	X	-	-	-
0226	Greater white-fronted goose			-	X	X	X	X						X	X	X	-	-	-
	Snow goose			-	X	X	X							X	X	X	-	-	-
0246	Marsh birds			-	X	X	X	X	X	X	X	X	X	X	X	X	-	-	-
	Rails			-	X	X	X	X	X	X	X	X	X	X	X	X	-	-	-
	Wading birds			-	X	X	X	X	X	X	X	X	X	X	X	X	-	-	-
	Common moorhen			-	X	X	X	X	X	X	X	X	X	X	X	X	MAR-OCT	-	-
	Dabbling ducks			-	X	X	X	X	X				X	X	X	X	-	-	-
	Greater white-fronted goose			-	X	X	X	X						X	X	X	-	-	-
	Purple gallinule			-				X	X	X	X	X	X				-	-	-
	Snow goose			-	X	X	X							X	X	X	-	-	-
	Waterfowl			-	X	X	X	X	X	X	X	X	X	X	X	X	-	-	-

Fish

RARNUM	NAME	S F	T E	CONC	J	F	M	A	M	J	J	A	S	O	N	D	Spawning	Eggs	Larvae	Juveniles	Adults
0483	Tarpon			RARE			X	X	X	X	X	X	X	X	X	X	-	-	-	MAR-NOV	-

Marine Mammal

RARNUM	NAME	S F	T E	CONC	J	F	M	A	M	J	J	A	S	O	N	D	Mating	Calving	Pupping	Molting
0739	West Indian manatee	S/F	E/E	VERY-RARE						X	X	X					-	-	-	-

Terrestrial Mammal

RARNUM	NAME	S F	T E	CONC	J	F	M	A	M	J	J	A	S	O	N	D	Nesting
0801	Northern river otter			-	X	X	X	X	X	X	X	X	X	X	X	X	N/A

Human Use Resources

Category	RARNUM	NAME	CONTACT	CONTACT INFO
Boat Ramp	2015	Bayou RV Park		jeffersonnechestrin@bayourvpark
	2019	SH 73 Ramp		jeffersonnechestrin@hwy73ramp
Facility	1055	Sunoco Logistics Nederland Marine Terminal	Gerald W. Turner	409-727-2301
	1071	Jacks Shrimp Docks	Jack Hemmenway	409-963-9882
Water Intake	4025	J E BROUSSARD II ETAL		
	4026	HARRY M HEBERT ETAL		
	4027	MARVIN DUDLEY		
	4030	CHEMICAL WASTE MANAGEMENT		

1. Incident Name	2. Operational Period (Date/Time)	Assignment List ICS 204-OS
------------------	-----------------------------------	----------------------------

3. Branch	4. Division/Group
-----------	-------------------

5. Operations Personnel	
Operations Section Chief	_____
Branch Director	_____
Division/Group Supervisor	_____

6. Resources Assigned This Period						"X" Indicates 204a attachment with special instructions
Resource Identifier	Leader	Contact Info #	# of Persons	Reporting Info/Notes/Remarks		

7. Assignments

SAFETY NOTE: Shallow near bank, submerged structures, and Reptiles.

8. Site Number: 19-A	9. Quad Name Port Acres	10. NOAA Chart # 11343	11. GLO Atlas Page # 19	12. County Jefferson
-------------------------	----------------------------	---------------------------	----------------------------	-------------------------

13. Site Information: 19-A Site 19-A is the pump station located on the East bank of Taylor Bayou approximately 2.25 miles Southeast of the Taylor Bayou/Hwy 73 Bridge. Economic contacts: Jefferson county DD#7 409-985-4369. Jacks Shrimp Docks 409-982-3216.			14. Latitude From: N 29°52'49.25"	To:
			15. Longitude From: W 94°01'0.68"	To:

16. Closest Boat Ramp Taylor Bayou/Hwy 73 Bridge	17. Distance From Ramp 2.25 miles	18. Boat Type Flat Bottom Boat
---	--------------------------------------	-----------------------------------

19. Directions From Local Sector To reach the Taylor Bayou/Hwy 73 Bridge take Hwy 69/96 South to Hwy 73 West. Continue on Hwy 73 West until you reach Taylor Bayou. Exit to the Right immediately before the bridge. The boat launch is located under the Taylor Bayou/Hwy 73 Bridge.		20. Closest Airport Jefferson County
		21. Closest Helo Spot Jefferson County

22. Trustee/Contact Numbers	23. Resources at Risk	24. Width of inlet 140 ft. in ft.
USCG: (409) 723-6509 RRC: (713)869-5001	Atlas Priority Medium	25. Water depth in ft. 15 ft.
USCG DUTY: (409) 719-1597 TPWD: (409)892-8666	Environmental Habitat for waterfowl, wading birds and Reptiles.	26. Current Medium
TGLO: (800) 832-8224 NRDA: (512) 463 -9309	Economic Recreational	27. No. of Personnel 4
TCEQ: (409)781-9330 USFWS: (281) 286-8282		

25. Booming Strategy Recommendation Boom should be configured in an exclusion pattern as to prevent oil from entering cuts. Bring sufficient anchors and rope to accomplish task.
--

AERIAL PHOTO

ON SITE PHOTO



29. Prepared By:	30. Reviewed by (PSC)	31. Reviewed by (OSC):
Assignment List	ICS 204 OS (Geographic Response Plan)	Project Updated:

"Response strategies may need to be modified to account for changes due to seasonality, weather conditions, spill characteristics, tides and any other considerations."

1. Incident Name	2. Operational Period (Date/Time)	Assignment List ICS 204-OS
------------------	-----------------------------------	----------------------------

3. Branch	4. Division/Group
-----------	-------------------

5. Operations Personnel	
Operations Section Chief	_____
Branch Director	_____
Division/Group Supervisor	_____

6. Resources Assigned This Period					"X" Indicates 204a attachment with special instructions
Resource Identifier	Leader	Contact Info #	# of Persons	Reporting Info/Notes/Remarks	

7. Assignments

SAFETY NOTE: Shallow at low tide, Reptiles.

8. Site Number: 19-B	9. Quad Name Port Acres	10. NOAA Chart # 11343	11. GLO Atlas Page # 19	12. County Jefferson
-------------------------	----------------------------	---------------------------	----------------------------	-------------------------

13. Site Information: 19-B Site 19-B is an oxbow located approximately 2 miles South of the Taylor Bayou/Hwy73 Bridge. J. D. Murphree Wildlife Management Area is located on the South and West banks. Economic contacts: Jefferson county DD#7 409-985-4369. Jacks Shrimp Docks 409-982-3216.		14. Latitude From: N 29°52'46"	To:
		15. Longitude From: W 94°01'05"	To:

16. Closest Boat Ramp Taylor Bayou/Hwy 73 Bridge	17. Distance From Ramp 2 Miles	18. Boat Type Flat Bottom Boat
---	-----------------------------------	-----------------------------------

19. Directions From Local Sector To reach the Taylor Bayou/Hwy 73 Bridge you would take Hwy 69/96 South to Hwy 73 West. Continue on Hwy 73 West until you reach Taylor Bayou. Exit to the Right immediately before the bridge. The boat launch is located under the Taylor Bayou/Hwy 73 Bridge.		20. Closest Airport Jefferson County	
		21. Closest Helo Spot Jefferson County	

22. Trustee/Contact Numbers	23. Resources at Risk	24. Width of inlet North side 710', South side 550' in ft.
USCG: (409) 723-6509 RRC: (713)869-5001	Atlas Priority Medium	25. Water depth in ft. 4 ft.
USCG DUTY: (409) 719-1597 TPWD: (409)892-8666	Environmental Habitat for waterfowl, wading birds and Reptiles	
TGLO: (800) 832-8224 NRDA: (512) 463 -9309	Economic Recreational	26. Current Medium
TCEQ: (409)781-9330 USFWS: (281) 286-8282		27. No. of Personnel 4

25. Booming Strategy Recommendation Boom should be configured in an exclusion and or deflection pattern as to prevent oil from entering cuts. Bring sufficient anchors and rope to accomplish task.
--



29. Prepared By:	30. Reviewed by (PSC)	31. Reviewed by (OSC):
Assignment List	ICS 204 OS (Geographic Response Plan)	Project Updated:

"Response strategies may need to be modified to account for changes due to seasonality, weather conditions, spill characteristics, tides and any other considerations."

1. Incident Name	2. Operational Period (Date/Time)	Assignment List ICS 204-OS
------------------	-----------------------------------	----------------------------

3. Branch	4. Division/Group
-----------	-------------------

5. Operations Personnel	
Operations Section Chief	_____
Branch Director	_____
Division/Group Supervisor	_____

6. Resources Assigned This Period "X" Indicates 204a attachment with special instructions

Resource Identifier	Leader	Contact Info #	# of Persons	Reporting Info/Notes/Remarks

7. Assignments

SAFETY NOTE: Shallow near banks, Reptiles.

8. Site Number: 19-C	9. Quad Name Port Acres	10. NOAA Chart # 11343	11. GLO Atlas Page # 19	12. County Jefferson
-------------------------	----------------------------	---------------------------	----------------------------	-------------------------

13. Site Information: 19-C Site 19-C is the Port Arthur Hunting Club and Marina, which is located on the East bank of Taylor Bayou. This site is approximately 1.5 miles East-Southeast of the Taylor Bayou/Hwy 73 Bridge. There is a small boat launch located at this site. Permission would have to be granted to utilize this launch. J. D. Murphree WMA is nearby and houses a higher quality boat launch. Economic Contacts: Jefferson county DD#7 409-985-4369. Jacks Shrimp Docks. 409-982-3216.		14. Latitude From: N 29°53'04"	To:
		15. Longitude From: W 94°01'37"	To:

16. Closest Boat Ramp Taylor Bayou/Hwy 73 Bridge	17. Distance From Ramp 1.5 Miles	18. Boat Type Flat Bottom Boat
---	-------------------------------------	-----------------------------------

19. Directions From Local Sector To reach the Taylor Bayou/Hwy 73 Bridge you would take Hwy 69/96 South to Hwy 73 West. Continue on Hwy 73 West until you reach Taylor Bayou. Exit to the Right immediately before the bridge. The boat launch is located under the Taylor Bayou/Hwy 73 Bridge.		20. Closest Airport Jefferson County	
		21. Closest Helo Spot Jefferson County	

22. Trustee/Contact Numbers	23. Resources at Risk	24. Width of inlet 100 ft. in ft.
USCG: (409) 723-6509 RRC: (713)869-5001	Atlas Priority Low	25. Water depth in ft. 8 ft.
USCG DUTY: (409) 719-1597 TPWD: (409)892-8666	Environmental Habitat for waterfowl, wading birds and reptiles.	
TGLO: (800) 832-8224 NRDA: (512) 463 -9309	Economic Recreational	26. Current Medium
TCEQ: (409)781-9330 USFWS: (281) 286-8282		27. No. of Personnel 4

25. Booming Strategy Recommendation
Boom should be configured in an exclusion pattern as to prevent oil from entering cuts. Bring sufficient anchors and rope to accomplish task

AERIAL PHOTO

ON SITE PHOTO



29. Prepared By:	30. Reviewed by (PSC)	31. Reviewed by (OSC):
Assignment List	ICS 204 OS (Geographic Response Plan)	Project Updated:

"Response strategies may need to be modified to account for changes due to seasonality, weather conditions, spill characteristics, tides and any other considerations."

1. Incident Name	2. Operational Period (Date/Time)	Assignment List ICS 204-OS
------------------	-----------------------------------	----------------------------

3. Branch	4. Division/Group
-----------	-------------------

5. Operations Personnel
Operations Section Chief _____
Branch Director _____
Division/Group Supervisor _____

6. Resources Assigned This Period "X" Indicates 204a attachment with special instructions

Resource Identifier	Leader	Contact Info #	# of Persons	Reporting Info/Notes/Remarks

7. Assignments

SAFETY NOTE: A high volume of recreational traffic can be in this area, and reptiles.

8. Site Number: 19-D	9. Quad Name Port Acres	10. NOAA Chart # 11343	11. GLO Atlas Page # 19	12. County Jefferson
-------------------------	----------------------------	---------------------------	----------------------------	-------------------------

13. Site Information: 19-D Site 19-D is an oxbow that is located approximately 0.75 of a mile Southeast of the Taylor Bayou/Hwy 73 Bridge on the East bank of Taylor Bayou. Jacks Shrimp Dock and J. D. Murphree Wildlife Management Area are located within this oxbow. Economic Contacts: Jefferson county DD#7 409-985-4369. Jacks Shrimp Docks. 409-982-3216.	14. Latitude From: N 29°53'54"	To:	15. Longitude From: W 94°02'12"	To:
---	--	-----	---	-----

16. Closest Boat Ramp Taylor's Bayou/Hwy 73 Bridge	17. Distance From Ramp 0.75	18. Boat Type Flat Bottom Boat
--	--------------------------------	-----------------------------------

19. Directions From Local Sector To reach the Taylor Bayou/Hwy 73 Bridge you would take Hwy 69/96 South to Hwy 73 West. Continue on Hwy 73 West until you reach Taylor Bayou. Exit to the Right immediately before the bridge. The boat launch is located under the Taylor Bayou/Hwy 73 Bridge.	20. Closest Airport Jefferson County
	21. Closest Helo Spot Jefferson County

22. Trustee/Contact Numbers	23. Resources at Risk	24. Width of inlet West Side 620', East Side 590' in ft.
USCG: (409) 723-6509 RRC: (713)869-5001	Atlas Priority Medium	25. Water depth in ft. 7 ft.
USCG DUTY: (409) 719-1597 TPWD: (409)892-8666	Environmental Habitat waterfowl and wading birds and reptiles	26. Current Medium
TGLO: (800) 832-8224 NRDA: (512) 463 -9309	Economic Recreational	27. No. of Personnel 4
TCEQ: (409)781-9330 USFWS: (281) 286-8282		

25. Booming Strategy Recommendation Boom should be configured in an exclusion and or deflection pattern as to prevent oil from entering cuts. Bring sufficient anchors and rope to accomplish task.
--

AERIAL PHOTO



ON SITE PHOTO



29. Prepared By:	30. Reviewed by (PSC)	31. Reviewed by (OSC):
Assignment List	ICS 204 OS (Geographic Response Plan)	Project Updated:

"Response strategies may need to be modified to account for changes due to seasonality, weather conditions, spill characteristics, tides and any other considerations."

1. Incident Name	2. Operational Period (Date/Time)	Assignment List ICS 204-OS
------------------	-----------------------------------	----------------------------

3. Branch	4. Division/Group
-----------	-------------------

5. Operations Personnel	
Operations Section Chief	_____
Branch Director	_____
Division/Group Supervisor	_____

6. Resources Assigned This Period "X" Indicates 204a attachment with special instructions

Resource Identifier	Leader	Contact Info #	# of Persons	Reporting Info/Notes/Remarks

7. Assignments

SAFETY NOTE: A high volume of recreational traffic is in this area and reptiles.

8. Site Number: 19-E	9. Quad Name Port Acres	10. NOAA Chart # 11343	11. GLO Atlas Page # 19	12. County Jefferson
-------------------------	----------------------------	---------------------------	----------------------------	-------------------------

13. Site Information: 19-E Site 19-E consists of three inlets that lead into Big Hill Bayou. Big Hill Bayou feeds into J. D. Murphree Wildlife Management Area, which is a sensitive marsh area. This site is located approximately 1 mile East-Southeast of the Taylor Bayou/Hwy 73 Bridge on the West bank of Taylor Bayou. Boom has been deployed across the mouth of each cut by TPW to protect marsh system from invasive water vegetation. This boom should not be confused as containment boom for response proposes. Economic contacts: Jefferson county DD#7 409-985-4369. Jacks Shrimp Docks. 409-982-3216.	14. Latitude From: N 29°52'48"	To:	15. Longitude From: W 94°02'03"	To:
---	--	-----	---	-----

16. Closest Boat Ramp Taylor Bayou/Hwy 73 Bridge	17. Distance From Ramp 1 Mile	18. Boat Type Flat Bottom Boat
---	----------------------------------	-----------------------------------

19. Directions From Local Sector To reach the Taylor Bayou/Hwy 73 Bridge you would take Hwy 69/96 South to Hwy 73 West. Continue on Hwy 73 West until you reach Taylor Bayou. Exit to the Right immediately before the bridge. The boat launch is located under the Taylor Bayou/Hwy 73 Bridge.	20. Closest Airport Jefferson County
	21. Closest Helo Spot Jefferson County

22. Trustee/Contact Numbers	23. Resources at Risk	24. Width of inlet East to West, 350', 130', 90' in ft.
USCG: (409) 723-6509 RRC: (713) 869-5001	Atlas Priority High	25. Water depth in ft. 8 ft.
USCG DUTY: (409) 719-1597 TPWD: (409) 892-8666	Environmental Habitat for waterfowl, wading birds and reptiles	26. Current Medium
TGLO: (800) 832-8224 NRDA: (512) 463 -9309	Economic Recreational	27. No. of Personnel 4
TCEQ: (409) 781-9330 USFWS: (281) 286-8282		

25. Booming Strategy Recommendation Boom should be configured in an exclusion and or deflection pattern as to prevent oil from entering cuts. Bring sufficient anchors and rope to accomplish task.
--



29. Prepared By:	30. Reviewed by (PSC)	31. Reviewed by (OSC):
Assignment List	ICS 204 OS (Geographic Response Plan)	Project Updated:

"Response strategies may need to be modified to account for changes due to seasonality, weather conditions, spill characteristics, tides and any other considerations."

1. Incident Name	2. Operational Period (Date/Time)	Assignment List ICS 204-OS
------------------	-----------------------------------	----------------------------

3. Branch	4. Division/Group
-----------	-------------------

5. Operations Personnel	
Operations Section Chief	_____
Branch Director	_____
Division/Group Supervisor	_____

6. Resources Assigned This Period "X" Indicates 204a attachment with special instructions

Resource Identifier	Leader	Contact Info #	# of Persons	Reporting Info/Notes/Remarks

7. Assignments

SAFETY NOTE: Recreational traffic, Very shallow, floating vegetation, reptiles.

8. Site Number: 19-F	9. Quad Name Port Acres	10. NOAA Chart # 11343	11. GLO Atlas Page # 19	12. County Jefferson
-------------------------	----------------------------	---------------------------	----------------------------	-------------------------

13. Site Information: 19-F Site 19-F consists of Taylor Bayou North of Highway 73 and Hillebrandt Bayou. There are many inlets and oxbows within this area. Both Bayous' are shallow beyond this point. Most of the area is best suited for a john boat or airboat. Even areas that are further out from shore may be less than 1 foot in depth. The shoreline on both Bayous' consists of highly sensitive marsh. Some homes and buildings are located on the West fork of Taylor Bayou. Economic Contacts: Jefferson county DD#7 409-985-4369. Jacks Shrimp Docks. 409-982-3216.	14. Latitude From: N 29°53'01"	To:	15. Longitude From: W 94°03'05"	To:
--	-----------------------------------	-----	------------------------------------	-----

16. Closest Boat Ramp Taylor Bayou/Hwy 73 Bridge	17. Distance From Ramp On site	18. Boat Type Flat Bottom Boat
---	-----------------------------------	-----------------------------------

19. Directions From Local Sector To reach the Taylor Bayou/Hwy 73 Bridge you would take Hwy 69/96 South to Hwy 73 West. Continue on Hwy 73 West until you reach Taylor Bayou. Exit to the Right immediately before the bridge. The boat launch is located under the Taylor Bayou/Hwy 73 Bridge.	20. Closest Airport Jefferson County
	21. Closest Helo Spot Jefferson County

22. Trustee/Contact Numbers USCG: (409) 723-6509 RRC: (713)869-5001 USCG DUTY: (409) 719-1597 TPWD: (409)892-8666 TGLO: (800) 832-8224 NRDA: (512) 463 -9309 TCEQ: (409)781-9330 USFWS: (281) 286-8282	23. Resources at Risk Atlas Priority High Environmental Taylor Bayou and Hillebrandt Bayou have highly sensitive shorelines with bottomland Economic Recreational	24. Width of inlet N/A in ft. 25. Water depth in ft. N/A 26. Current Medium 27. No. of Personnel 4
--	--	---

25. Booming Strategy Recommendation
Boom should be configured in an exclusion pattern as to prevent oil from entering cuts. Bring sufficient anchors and rope to accomplish task



29. Prepared By:	30. Reviewed by (PSC)	31. Reviewed by (OSC):
Assignment List	ICS 204 OS (Geographic Response Plan)	Project Updated:

"Response strategies may need to be modified to account for changes due to seasonality, weather conditions, spill characteristics, tides and any other considerations."

1. Incident Name	2. Operational Period (Date/Time)	Assignment List ICS 204-OS
------------------	-----------------------------------	----------------------------

3. Branch	4. Division/Group
-----------	-------------------

5. Operations Personnel	
Operations Section Chief	_____
Branch Director	_____
Division/Group Supervisor	_____

6. Resources Assigned This Period						"X" Indicates 204a attachment with special instructions
Resource Identifier	Leader	Contact Info #	# of Persons	Reporting Info/Notes/Remarks		

7. Assignments

SAFETY NOTE: A high volume of recreational traffic is in this area. Caution should be use near this site due to oddly placed telephone poles and reptiles.

8. Site Number: 19-G	9. Quad Name Port Acres	10. NOAA Chart # 11343	11. GLO Atlas Page # 19	12. County Jefferson
-------------------------	----------------------------	---------------------------	----------------------------	-------------------------

13. Site Information: 19-G Site 19-G is two inlets located on the West bank of Taylor Bayou, immediately South of Hwy 73. This site is easily recognized by the power-lines running overhead. This is a high flood prone area. Economic Contacts: Jefferson county DD#7 409-985-4369. Jacks Shrimp Docks. 409-982-3216.	14. Latitude From: N 29°52'52.93"	To:	15. Longitude From: W 94°03'03.04"	To:
---	---	-----	--	-----

16. Closest Boat Ramp Taylor Bayou/Hwy 73 Bridge	17. Distance From Ramp On Site	18. Boat Type Flat Bottom Boat
---	-----------------------------------	-----------------------------------

19. Directions From Local Sector To reach the Taylor Bayou/Hwy 73 Bridge you would take Hwy 69/96 South to Hwy 73 West. Continue on Hwy 73 West until you reach Taylor Bayou. Exit to the Right immediately before the bridge. The boat launch is located under the Taylor Bayou/Hwy 73 Bridge.	20. Closest Airport Jefferson County
	21. Closest Helo Spot Jefferson County

22. Trustee/Contact Numbers	23. Resources at Risk	24. Width of inlet 370' in ft.
USCG: (409) 723-6509 RRC: (713)869-5001	Atlas Priority High	25. Water depth in ft. 4'
USCG DUTY: (409) 719-1597 TPWD: (409)892-8666	Environmental Habitat for waterfowl, wading birds and Reptiles.	26. Current Medium
TGLO: (800) 832-8224 NRDA: (512) 463 -9309	Economic Recreational	27. No. of Personnel 4
TCEQ: (409)781-9330 USFWS: (281) 286-8282		

25. Booming Strategy Recommendation Boom should be configured in an exclusion and or deflection pattern as to prevent oil from entering cuts. Bring sufficient anchors and rope to accomplish task



29. Prepared By:	30. Reviewed by (PSC)	31. Reviewed by (OSC):
Assignment List	ICS 204 OS (Geographic Response Plan)	Project Updated:

"Response strategies may need to be modified to account for changes due to seasonality, weather conditions, spill characteristics, tides and any other considerations."