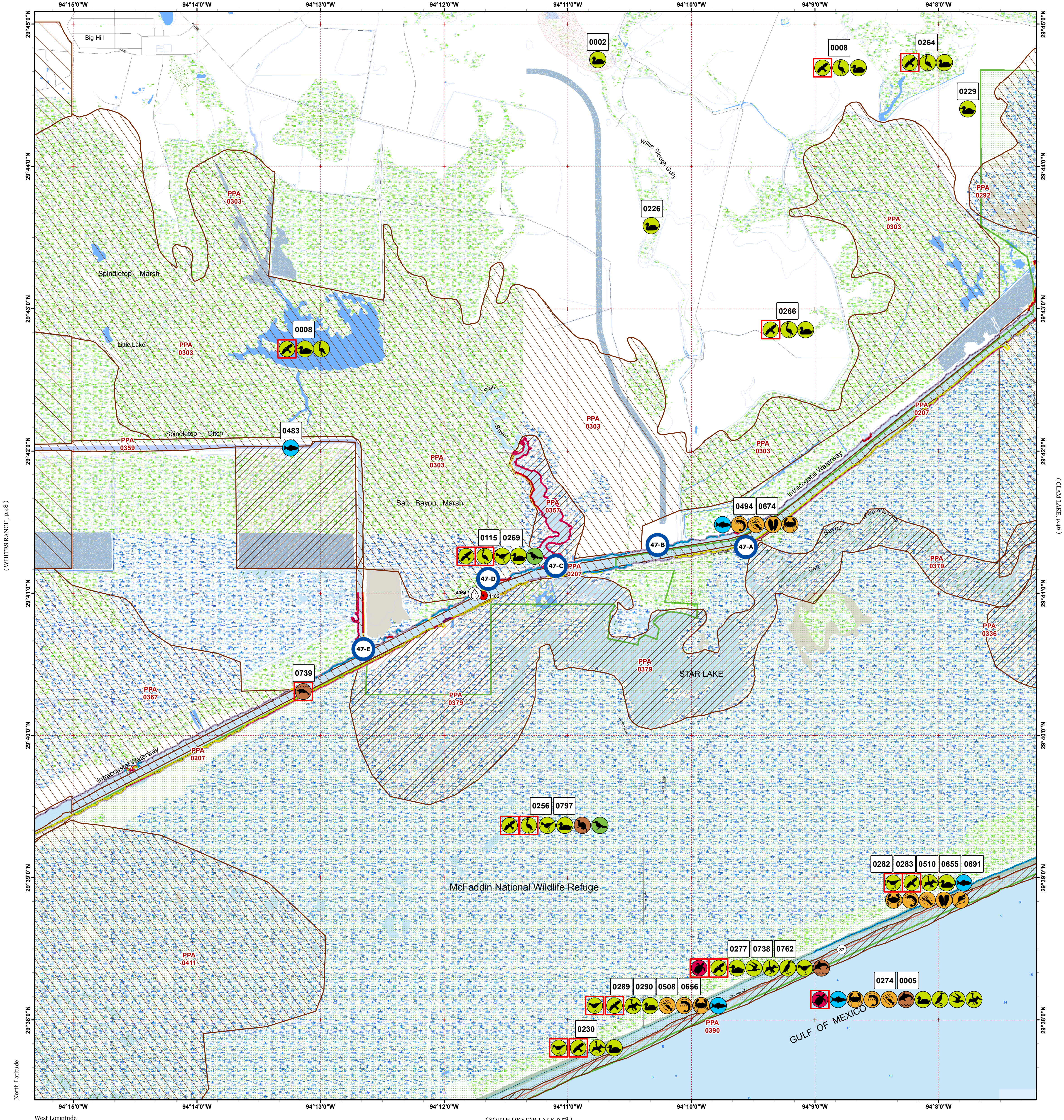


STAR LAKE

(ALLIGATOR HOLE MARSH, p.33)

Click Here or Scroll Down for Associated Map Data

Click on the Geographic Response Plan Target to View the ICS Form

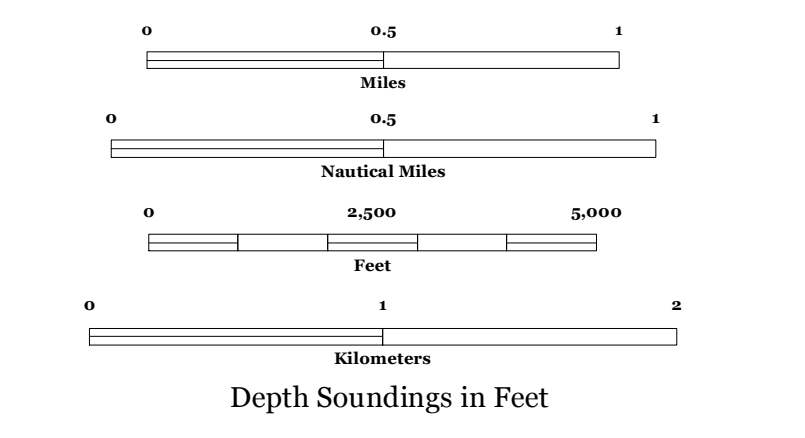
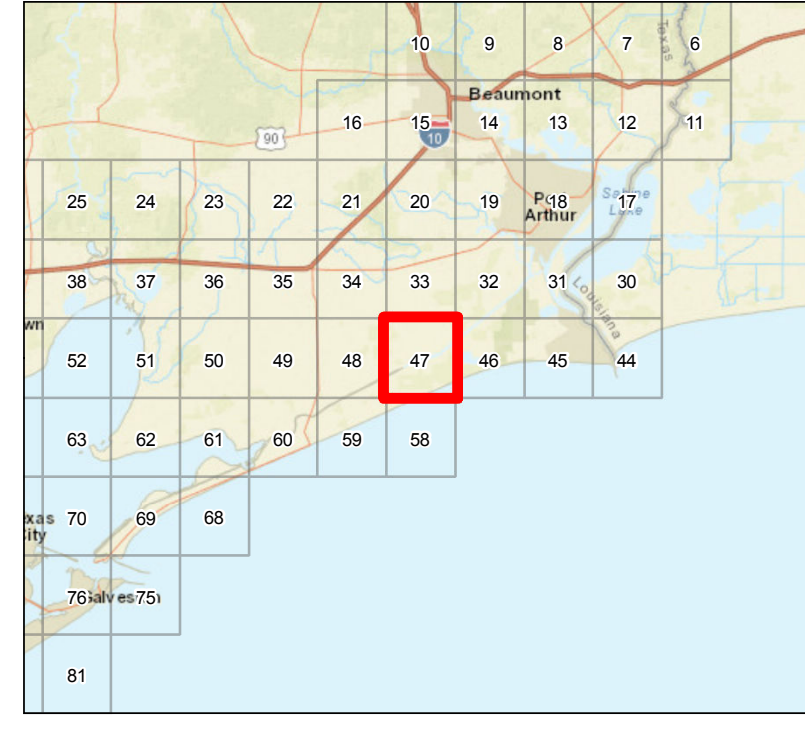


North Latitude
West Longitude



Oil Spill Planning and Response Atlas
2016

The Texas General Land Office makes no representations or warranties regarding the accuracy or completeness of the information depicted on this map or the data from which it was produced. This map is not suitable for navigational purposes and does not purport to depict boundaries of private and public land.



- ### Human Use Features
- Facility
 - Water Intake
 - Geographic Response Plan

- ### Map Base Layers
- State Highway
 - Road
 - GIWW
 - Wildlife Refuge
 - Estuarine Seagrass or Algae Bed
 - Bays
 - Salt and Brackish Marshes
 - Beach or Tidal Flat
 - Exposed Lake Shore
 - Marine Bottom
 - Rocky Shoreline
 - Marine Shoreline
 - Freshwater Marshes
 - Willow Thickets
 - Lake / Pond
 - Tidally Influenced River
 - Perennial River
 - Intermittent River
 - County Boundary

- ### Priority Protection Areas
- HIGH
 - MEDIUM
 - LOW

- ### Species Icons Within Map Quad
- Turtle T/E
 - Benthic Marine
 - Bivalve
 - Cephalopod
 - Crab
 - Gastropod
 - Shrimp
 - Fish
 - Dolphin
 - Mammal T/E
 - Small Mammal
 - Diving Bird
 - Gull/Tern
 - Pelagic Bird
 - Raptor
 - Raptor Endangered
 - Shorebird
 - Shorebird Endangered
 - Wading
 - Wading Endangered
 - Waterfowl
 - Passerine

- ### ENVIRONMENTAL SENSITIVITY INDEX
- 10D Mangroves and Woody Vegetation
 - 10C Freshwater Swamps
 - 10B Freshwater Marshes
 - 10A Salt and Brackish Water Marshes
 - 9 Sheltered Tidal Flats
 - 8C Sheltered Rocky/Karst Shores
 - 8D Sheltered Scarps
 - 8B Sheltered Riprap Structures
 - 8A Sheltered Solid Manmade Structures
 - 7 Exposed Tidal Flats
 - 6B Exposed Riprap Structures
 - 6A Gravel or Shell Beaches
 - 5 Mixed Sand and Gravel or Shell Beaches
 - 4 Coarse-Grained Sand Beaches
 - 3B Scarps and Steep Slopes in Sand
 - 3A Fine-Grained Sand Beaches
 - 2B Wave-Cut Clay Platforms
 - 2A Scarps and Steep Slopes in Clay
 - 1 Exposed Walls and Other Solid Structures

Quadrant: STAR LAKE

Map # :47

Biological Information for this quadrant represents known concentration areas of occurrence.

Habitat Priority Protection Areas

PPA ID	PRIORITY	POLY DESCRIPTION	BIRDS RANK	BIRDS DESCRIPTION	FISH RANK	FISH DESCRIPTION	WETLANDS RANK	WETLANDS DESCRIPTION
	HIGH	Golden Triangle Conservation Reservoir, colonial water bird rookery 587-124	High	Tri-colored herons, Little blue herons, White-faced ibises				
PPA0207	MEDIUM	Gulf Intracoastal Waterway	HIGH		HIGH	High priority recreational fishing, crabbing; shrimp, blue crab, red and black drum, seatrout, flounder		
PPA0292	MEDIUM	Part of McFaddin NWR	HIGH				HIGH	Freshwater marsh
PPA0303	MEDIUM	Salt Bayou Marsh	HIGH			Nursery, some fishing	HIGH	Freshwater marsh
PPA0336	HIGH	Part of Sea Rim State Park, McFaddin NWR	HIGH	High numbers of wintering waterfowl (scaup, gadwall, wigeon, teals, mottled duck, etc.), all North American rails, peregrine falcon, marsh birds, alligators, muskrat, mink, river otter	MEDIUM	Nursery	HIGH	Intermediate to brackish marsh: marshhay cordgrass, saltmarsh bulrush, Olney bulrush
PPA0357	HIGH	Salt Bayou north of GIWW	HIGH		MEDIUM	Nursery	HIGH	
PPA0359	MEDIUM	Spindletop Ditch	MEDIUM		MEDIUM	High recreational fishing		
PPA0367	MEDIUM	Marsh south of Spindletop Ditch	HIGH	Wintering waterfowl, rails, mottled duck, osprey, peregrine falcon, wading birds			HIGH	Freshwater marsh
PPA0379	HIGH	Star Lake	HIGH	Waterfowl, rails, mottled duck, alligators, marsh mammals, occasional wood stork	MEDIUM	Moderate nursery, some fishing	HIGH	
PPA0390	HIGH	Gulf shoreline	HIGH	Piping and snowy plovers, willets, ruddy turnstone, other shorebirds, peregrine falcon, terns, brown pelican; high use areas vary				
PPA0411	MEDIUM	Part of McFaddin NWR	HIGH	Wintering waterfowl: all North American rails, mottled duck, peregrine falcon, marsh birds, alligators, muskrat, mink, river otter	LOW	Nursery, low priority recreational fishery	HIGH	Intermediate marsh with freshwater inclusions

Biological Resources

Bird

RARNUM	NAME	S	F	T	E	CONC	J	F	M	A	M	J	J	A	S	O	N	D	Nesting	Migrating	Molting
0002	Waterfowl					-	X	X	X	X	X	X	X	X	X	X	X	X	-	-	-
0005	American white pelican					COMMON	X	X	X	X	X			X	X	X	X	X	-	-	-
	Brown pelican					COMMON	X	X	X	X	X	X	X	X	X	X	X	X	-	-	-
	Cormorants					COMMON	X	X	X	X	X	X	X	X	X	X	X	X	-	-	-
	Diving birds					-	X	X	X	X	X	X	X	X	X	X	X	X	-	-	-
	Grebes					UNCOMMON	X	X	X	X	X	X			X	X	X	X	-	-	-
	Loons					-	X	X	X	X	X					X	X	X	-	-	-
	Gulls					COMMON-ABUNDANT	X	X	X	X	X	X	X	X	X	X	X	X	-	-	-
	Terns					COMMON-ABUNDANT	X	X	X	X	X	X	X	X	X	X	X	X	-	-	-
	Magnificent frigatebird					COMMON					X	X	X	X	X	X	X		-	-	-
	Masked booby					UNCOMMON			X	X	X	X	X	X	X	X			-	-	-
	Northern gannet					COMMON	X	X	X	X						X	X	X	-	-	-
	Shearwaters					UNCOMMON								X	X	X	X		-	-	-
	Storm-petrels					RARE					X	X	X						-	-	-
	Bufflehead					UNCOMMON	X	X	X								X	X	-	-	-
	Canvasback					UNCOMMON	X	X	X							X	X	X	-	-	-
	Diving ducks					-	X	X	X	X	X					X	X	X	-	-	-
	Greater scaup					UNCOMMON	X	X	X								X	X	-	-	-
	Lesser scaup					COMMON	X	X	X	X						X	X	X	-	-	-
	Scoters					RARE	X	X	X	X							X	X	-	-	-
0008	Osprey					-	X	X	X	X	X				X	X	X	X	-	-	-
	Peregrine falcon	S		T		-	X	X	X	X				X	X	X	X	X	-	-	-
	Marsh birds					-	X	X	X	X	X	X	X	X	X	X	X	X	-	-	-
	Wading birds					-	X	X	X	X	X	X	X	X	X	X	X	X	-	-	-
	Dabbling ducks					-	X	X	X	X	X				X	X	X	X	-	-	-
	Waterfowl					-	X	X	X	X	X	X	X	X	X	X	X	X	-	-	-
0115	Migratory songbirds					-				X	X								-	-	-
	Peregrine falcon	S		T		-	X	X	X	X				X	X	X	X	X	-	-	-
	Black-necked stilt					10S		X	X	X	X	X	X	X	X	X			-	-	-
	Dowitchers					100S	X	X	X	X	X		X	X	X	X	X	X	-	JUL-MAY*	-
	Dunlin					100S	X	X	X	X	X				X	X	X	X	-	-	-
	Killdeer					100S	X	X	X	X	X	X	X	X	X	X	X	X	-	DEC-MAR	-
	Shorebirds					1000S	X	X	X	X	X	X	X	X	X	X	X	X	-	-	-
	Western sandpiper					100S	X	X	X	X	X	X	X	X	X	X	X	X	-	JUL-MAY*	-
	Willet					100S	X	X	X	X	X	X	X	X	X	X	X	X	-	AUG-APR*	-
	Yellowlegs					10S	X	X	X	X	X	X	X	X	X	X	X	X	-	JUL-MAY*	-
	American bittern					-	X	X	X	X	X				X	X	X	X	-	-	-
	Black rail					-	X	X	X	X	X	X	X	X	X	X	X	X	-	-	-
	Clapper rail					-	X	X	X	X	X	X	X	X	X	X	X	X	-	FEB-SEP	-
	King rail					-	X	X	X	X	X	X	X	X	X	X	X	X	-	APR-MAY	-
	Marsh birds					-	X	X	X	X	X	X	X	X	X	X	X	X	-	-	-
	Sora					-	X	X	X	X	X			X	X	X	X	X	-	-	-
	Wading birds					-	X	X	X	X	X	X	X	X	X	X	X	X	-	-	-
	Wood stork	S		T		OCCASIONAL					X	X	X	X	X				-	-	-
	Yellow rail					-	X	X	X	X					X	X	X	X	-	-	-
	Common moorhen					-	X	X	X	X	X	X	X	X	X	X	X	X	-	MAR-OCT	-

Bird

RARNUM	NAME	S	F	T	E	CONC	J	F	M	A	M	J	J	A	S	O	N	D	Nesting	Migrating	Molting
	Peregrine falcon	S		T		-	X	X	X	X				X	X	X	X	X	-	-	-
	Marsh birds					-	X	X	X	X	X	X	X	X	X	X	X	X	-	-	-
	Wading birds					-	X	X	X	X	X	X	X	X	X	X	X	X	-	-	-
	American coot					10000S	X	X	X	X					X	X	X	X	-	-	-
	American wigeon					1000S	X	X	X						X	X	X	X	-	-	-
	Blue-winged teal					10000S	X	X	X	X	X	X	X	X	X	X	X	X	MAY-JUL	-	-
	Bufflehead					PRESENT	X	X	X								X	X	-	-	-
	Canada goose					100S	X	X	X							X	X	X	-	-	-
	Canvasback					100S	X	X	X							X	X	X	-	-	-
	Dabbling ducks					-	X	X	X	X	X				X	X	X	X	-	-	-
	Fulvous whistling-duck					100S	X	X	X	X	X	X	X	X	X	X	X	X	MAY-AUG	-	-
	Gadwall					10000S	X	X	X	X					X	X	X	X	-	-	-
	Greater white-fronted goose					1000S	X	X	X							X	X	X	-	-	-
	Green-winged teal					10000S	X	X	X	X					X	X	X	X	-	-	-
	Lesser scaup					1000S	X	X	X	X						X	X	X	-	-	-
	Mallard					1000S	X	X	X							X	X	X	-	-	-
	Mottled duck					100S	X	X	X	X	X	X	X	X	X	X	X	X	FEB-AUG	-	JUN-AUG
	Northern pintail					10000S	X	X	X						X	X	X	X	-	-	-
	Northern shoveler					1000S	X	X	X	X					X	X	X	X	-	-	-
	Redhead					10S	X	X	X							X	X	X	-	-	-
	Ring-necked duck					10000S	X	X	X							X	X	X	-	-	-
	Ruddy duck					100S	X	X	X							X	X	X	-	-	-
	Snow goose					10000S	X	X	X								X	X	-	-	-
	Waterfowl					-	X	X	X	X	X	X	X	X	X	X	X	X	-	-	-
	Wood duck					10S	X	X	X	X	X	X	X	X	X	X	X	X	FEB-JUL	-	-
0266	Osprey					-	X	X	X	X	X				X	X	X	X	-	-	-
	Peregrine falcon	S		T		-	X	X	X	X				X	X	X	X	X	-	-	-
	Marsh birds					-	X	X	X	X	X	X	X	X	X	X	X	X	-	-	-
	Wading birds					-	X	X	X	X	X	X	X	X	X	X	X	X	-	-	-
	Dabbling ducks					-	X	X	X	X	X				X	X	X	X	-	-	-
	Greater white-fronted goose					-	X	X	X	X						X	X	X	-	-	-
	Snow goose					-	X	X	X							X	X	X	-	-	-
	Waterfowl					-	X	X	X	X	X	X	X	X	X	X	X	X	-	-	-
0269	Migratory songbirds					-			X	X									-	-	-
	Osprey					-	X	X	X	X	X				X	X	X	X	-	-	-
	Peregrine falcon	S		T		-	X	X	X	X				X	X	X	X	X	-	-	-
	Black-necked stilt					10S		X	X	X	X	X	X	X	X	X			-	-	-
	Dowitchers					100S	X	X	X	X	X	X	X	X	X	X	X	X	-	JUL-MAY*	-
	Dunlin					100S	X	X	X	X	X				X	X	X	X	-	-	-
	Killdeer					100S	X	X	X	X	X	X	X	X	X	X	X	X	-	DEC-MAR	-
	Shorebirds					1000S	X	X	X	X	X	X	X	X	X	X	X	X	-	-	-
	Western sandpiper					100S	X	X	X	X	X	X	X	X	X	X	X	X	-	JUL-MAY*	-
	Willet					100S	X	X	X	X	X	X	X	X	X	X	X	X	-	AUG-APR*	-
	Yellowlegs					10S	X	X	X	X	X	X	X	X	X	X	X	X	-	JUL-MAY*	-
	American bittern					-	X	X	X	X	X				X	X	X	X	-	-	-
	Black rail					-	X	X	X	X	X	X	X	X	X	X	X	X	-	-	-
	Clapper rail					-	X	X	X	X	X	X	X	X	X	X	X	X	FEB-SEP	-	-
	King rail					-	X	X	X	X	X	X	X	X	X	X	X	X	APR-MAY	-	-
	Marsh birds					-	X	X	X	X	X	X	X	X	X	X	X	X	-	-	-
	Sora					-	X	X	X	X	X				X	X	X	X	-	-	-
	Wading birds					-	X	X	X	X	X	X	X	X	X	X	X	X	-	-	-
	Wood stork	S		T		OCCASIONAL					X	X	X	X	X				-	-	-
	Yellow rail					-	X	X	X	X					X	X	X	X	-	-	-
	Common moorhen					-	X	X	X	X	X	X	X	X	X	X	X	X	MAR-OCT	-	-
	Dabbling ducks					-	X	X	X	X	X				X	X	X	X	-	-	-
	Waterfowl					-	X	X	X	X	X	X	X	X	X	X	X	X	-	-	-
0274	American white pelican					COMMON	X	X	X	X	X			X	X	X	X	X	-	-	-
	Brown pelican					COMMON	X	X	X	X	X	X	X	X	X	X	X	X	-	-	-
	Cormorants					COMMON	X	X	X	X	X	X	X	X	X	X	X	X	-	-	-
	Diving birds					-	X	X	X	X	X	X	X	X	X	X	X	X	-	-	-
	Grebes					UNCOMMON	X	X	X	X	X	X			X	X	X	X	-	-	-
	Loons					-	X	X	X	X	X				X	X	X	X	-	-	-
	Gulls					COMMON-ABUNDANT	X	X	X	X	X	X	X	X	X	X	X	X	-	-	-
	Terns					COMMON-ABUNDANT	X	X	X	X	X	X	X	X	X	X	X	X	-	-	-
	Magnificent frigatebird					COMMON				X	X	X	X	X	X	X			-	-	-
	Masked booby					UNCOMMON			X	X	X	X	X	X	X	X			-	-	-
	Northern gannet					COMMON	X	X	X	X					X	X	X		-	-	-
	Shearwaters					UNCOMMON								X	X	X	X		-	-	-
	Storm-petrels					RARE				X	X	X							-	-	-
	Bufflehead					UNCOMMON	X	X	X								X	X	-	-	-
	Canvasback					UNCOMMON	X	X	X							X	X	X	-	-	-
	Diving ducks					-	X	X	X	X	X					X	X	X	-	-	-
	Greater scaup					UNCOMMON	X	X	X								X	X	-	-	-
	Lesser scaup					COMMON	X	X	X	X						X	X	X	-	-	-
	Redhead					0-300-BIRDS	X	X	X							X	X	X	-	-	-
	Scoters					RARE	X	X	X	X							X	X	-	-	-
0277	American white pelican					COMMON	X	X	X	X	X			X	X	X	X	X	-	-	-
	Brown pelican					COMMON	X	X	X	X	X	X	X	X	X	X	X	X	-	-	-
	Cormorants					COMMON	X	X	X	X	X	X	X	X	X	X	X	X	-	-	-
	Diving birds					-	X	X	X	X	X	X	X	X	X	X	X	X	-	-	-
	Grebes					UNCOMMON	X	X	X	X	X	X			X	X	X	X	-	-	-
	Loons					-	X	X	X	X	X				X	X	X	X	-	-	-
	Pelicans					-	X	X	X	X	X	X	X	X	X	X	X	X	-	-	-
	Gulls					COMMON-ABUNDANT	X	X	X	X	X	X	X	X	X	X	X	X	-	-	-
	Terns					COMMON-ABUNDANT	X	X	X	X	X	X	X	X	X	X	X	X	-	-	-
	Magnificent frigatebird					COMMON				X	X	X	X	X	X	X			-	-	-
	Masked booby					UNCOMMON			X	X	X	X	X	X	X	X			-	-	-

Fish

RARNUM	NAME	S F	T E	CONC	J	F	M	A	M	J	J	A	S	O	N	D	Spawning	Eggs	Larvae	Juveniles	Adults
	Florida pompano			-	X	X	X	X	X	X	X	X	X	X	X	X	-	-	MAY-AUG	MAY-DEC	JAN-DEC
	Gray triggerfish			ABUNDANT	X	X	X	X	X	X	X	X	X	X	X	X	-	-	-	-	JAN-DEC
	Red snapper			-	X	X	X	X	X	X	X	X	X	X	X	X	-	-	-	JAN-DEC	JAN-DEC
	Atlantic bumper			-					X	X	X	X	X	X	X		-	-	-	-	MAY-NOV
	Atlantic tripletail			-	X	X	X	X	X	X	X	X	X	X	X	X	-	-	-	-	-
	Blackfin tuna			-					X	X	X	X	X	X			-	-	-	-	MAY-OCT
	Blacktip shark			-			X	X	X	X	X	X	X	X	X	X	-	-	-	MAR-DEC	MAR-DEC
	Cobia			-					X	X	X	X					-	-	-	-	-
	Crevalle jack			-	X	X	X	X	X	X	X	X	X	X	X	X	-	-	MAR-NOV	-	JAN-DEC
	Greater amberjack			-	X	X	X	X	X	X	X	X	X	X	X	X	-	-	-	JAN-DEC	JAN-DEC
	Gulf butterfish			HIGHLY-ABUNDANT	X	X	X	X	X	X	X	X	X	X	X	X	-	-	-	JAN-DEC	JAN-DEC
	King mackerel			-					X	X	X	X	X	X			-	-	-	-	MAY-OCT
	Spanish mackerel			ABUNDANT			X	X	X	X	X	X	X	X	X		MAY-SEP	MAY-SEP	-	MAR-NOV	MAR-NOV
	Spinner shark			-					X	X	X	X	X	X			-	-	-	MAY-OCT	MAY-OCT

Invertebrate

RARNUM	NAME	S F	T E	CONC	J	F	M	A	M	J	J	A	S	O	N	D	Spawning	Eggs	Larvae	Juveniles	Adults
0655	Atlantic surfclam			-	X	X	X	X	X	X	X	X	X	X	X	X	SEP-MAY*	-	-	-	JAN-DEC
	Atlantic ghost crab			-	X	X	X	X	X	X	X	X	X	X	X	X	AUG-APR*	-	-	-	JAN-DEC
	Mole crab			-	X	X	X	X	X	X	X	X	X	X	X	X	APR-MAY	-	-	-	JAN-DEC
	Speckled swimming crab			COMMON	X	X	X	X	X	X	X	X	X	X	X	X	-	-	-	-	-
	Lettered olive			-	X	X	X	X	X	X	X	X	X	X	X	X	-	-	-	-	-
0656	Brief squid			-	X	X	X	X	X	X	X	X	X	X	X	X	MAR-DEC	MAR-DEC	MAR-DEC	JAN-DEC	JAN-DEC
	Blue crab			ABUNDANT	X	X	X	X	X	X	X	X	X	X	X	X	-	-	JAN-DEC	-	-
	Lesser blue crab			-	X	X	X	X	X	X	X	X	X	X	X	X	-	-	MAR-DEC	-	-
	Atlantic seabob shrimp			-	X									X	X	X	-	-	-	-	OCT-JAN
	Brown shrimp			-			X	X	X	X	X	X	X	X			-	-	-	-	MAR-OCT
	White shrimp			ABUNDANT	X	X	X	X	X	X	X	X	X	X	X	X	MAR-SEP	-	-	-	JAN-DEC
0674	Atlantic rangia			-	X	X	X	X	X	X	X	X	X	X	X	X	MAR-OCT	-	MAR-OCT	JAN-DEC	JAN-DEC
	Blue crab			ABUNDANT	X	X	X	X	X	X	X	X	X	X	X	X	MAR-NOV	-	MAR-NOV	JAN-DEC	JAN-DEC
	Atlantic seabob shrimp			RARE								X	X	X	X		-	-	-	-	AUG-NOV
	Brown shrimp			COMMON			X	X	X	X	X	X	X	X	X		-	-	MAR-APR	MAY-NOV	-
	White shrimp			ABUNDANT	X	X	X	X	X	X	X	X	X	X	X	X	-	-	MAY-JUN	MAY-DEC	JAN-DEC
0691	Atlantic surfclam			-	X	X	X	X	X	X	X	X	X	X	X	X	SEP-MAY*	-	-	-	JAN-DEC
	Brief squid			-	X	X	X	X	X	X	X	X	X	X	X	X	MAR-DEC	MAR-DEC	MAR-DEC	JAN-DEC	JAN-DEC
	Atlantic ghost crab			-	X	X	X	X	X	X	X	X	X	X	X	X	AUG-APR*	-	-	-	JAN-DEC
	Blue crab			ABUNDANT	X	X	X	X	X	X	X	X	X	X	X	X	-	-	JAN-DEC	-	-
	Lesser blue crab			-	X	X	X	X	X	X	X	X	X	X	X	X	-	-	MAR-DEC	-	-
	Mole crab			-	X	X	X	X	X	X	X	X	X	X	X	X	APR-MAY	-	-	-	JAN-DEC
	Speckled swimming crab			COMMON	X	X	X	X	X	X	X	X	X	X	X	X	-	-	-	-	-
	Lettered olive			-	X	X	X	X	X	X	X	X	X	X	X	X	-	-	-	-	-
	Atlantic seabob shrimp			-	X									X	X	X	-	-	-	-	OCT-JAN
	Brown shrimp			-			X	X	X	X	X	X	X	X			-	-	-	-	MAR-OCT
	White shrimp			ABUNDANT	X	X	X	X	X	X	X	X	X	X	X	X	MAR-SEP	-	-	-	JAN-DEC

Marine Mammal

RARNUM	NAME	S F	T E	CONC	J	F	M	A	M	J	J	A	S	O	N	D	Mating	Calving	Pupping	Molting
0738	Bottlenose dolphin			-	X	X	X	X	X	X	X	X	X	X	X	X	-	JAN-DEC	-	-
0739	West Indian manatee	S/F	E/E	VERY-RARE						X	X	X					-	-	-	-

Reptile

RARNUM	NAME	S F	T E	CONC	J	F	M	A	M	J	J	A	S	O	N	D	Nesting	Hatching	Internesting	Juveniles	Adults
0762	Green sea turtle	S/F	T/T	OCCASIONAL			X	X	X	X	X	X	X	X	X		-	-	-	MAR-NOV	-
	Hawksbill sea turtle	S/F	E/E	OCCASIONAL			X	X	X	X	X	X	X	X			-	-	-	MAR-OCT	-
	Kemp's ridley sea turtle	S/F	E/E	COMMON			X	X	X	X	X	X	X	X	X		-	-	-	APR-NOV	APR-NOV
	Loggerhead sea turtle	S/F	T/T	OCCASIONAL	X	X	X	X	X	X	X	X	X	X	X	X	-	-	-	JAN-DEC	-

Terrestrial Mammal

RARNUM	NAME	S F	T E	CONC	J	F	M	A	M	J	J	A	S	O	N	D	Nesting
0797	Northern river otter			-	X	X	X	X	X	X	X	X	X	X	X	X	N/A

Human Use Resources

Facility	RARNUM	NAME	CONTACT	CONTACT INFO
	1182	Big Hill Strategic Petroleum Reserve	John Guidry	409-981-8232
Water Intake	RARNUM	NAME	CONTACT	CONTACT INFO
	4064	U S DEPARTMENT ENERGY		

1. Incident Name	2. Operational Period (Date/Time)	Assignment List ICS 204-OS
------------------	-----------------------------------	----------------------------

3. Branch	4. Division/Group
-----------	-------------------

5. Operations Personnel	
Operations Section Chief	_____
Branch Director	_____
Division/Group Supervisor	_____

6. Resources Assigned This Period						"X" Indicates 204a attachment with special instructions
Resource Identifier	Leader	Contact Info #	# of Persons	Reporting Info/Notes/Remarks		

7. Assignments

SAFETY NOTE: Shallow, reptiles in area

8. Site Number: 47-A	9. Quad Name Star Lake	10. NOAA Chart # 11343	11. GLO Atlas Page # 47	12. County Jefferson
-------------------------	---------------------------	---------------------------	----------------------------	-------------------------

13. Site Information: 47-A Site 47-A is an inlet leading to Star Lake and Salt Bayou (Five Mile Cut). Site is located on the South side of the ICWW approx. 14.5 miles East of High Island Bridge. Site is located at the point where the ICWW bends Northeastward. Site has a concrete dam protecting it.	14. Latitude From: N 29°41'22"	To:	
	15. Longitude From: W 94°09'29.74"	To:	

16. Closest Boat Ramp High Island Bridge	17. Distance From Ramp 15.5 miles	18. Boat Type Flat Bottom Boat
---	--------------------------------------	-----------------------------------

19. Directions From Local Sector Take Hwy 69 North to IH10 West, to Winnie. Exit IH10 to Hwy 124 South. Continue on Hwy 124 until you cross over High Island Bridge. Turn Right immediately at foot of bridge. Follow road to the launch.	20. Closest Airport Jefferson County
	21. Closest Helo Spot Jefferson County

22. Trustee/Contact Numbers	23. Resources at Risk	24. Width of inlet 100' in ft.
USCG: (409) 723-6509 RRC: (713)869-5001	Atlas Priority High	25. Water depth in ft. 2'
USCG DUTY: (409) 719-1597 TPWD: (409)892-8666	Environmental Habitat for threatened osprey and Peregrine falcon, waterfowl, wading birds, river otter and	26. Current Medium
TGLO: (800) 832-8224 NRDA: (512) 463 -9309	Economic Commercial traffic	27. No. of Personnel 2
TCEQ: (409)781-9330 USFWS: (281) 286-8282		

25. Booming Strategy Recommendation Boom should be configured in an exclusion patter as to prevent oil from entering cuts. Bring sufficient anchors and rope to accomplish task.



29. Prepared By:	30. Reviewed by (PSC)	31. Reviewed by (OSC):
Assignment List	ICS 204 OS (Geographic Response Plan)	Project Updated:

"Response strategies may need to be modified to account for changes due to seasonality, weather conditions, spill characteristics, tides and any other considerations."

1. Incident Name	2. Operational Period (Date/Time)	Assignment List ICS 204-OS
------------------	-----------------------------------	----------------------------

3. Branch	4. Division/Group
-----------	-------------------

5. Operations Personnel	
Operations Section Chief	_____
Branch Director	_____
Division/Group Supervisor	_____

6. Resources Assigned This Period	"X" Indicates 204a attachment with special instructions
-----------------------------------	---

Resource Identifier	Leader	Contact Info #	# of Persons	Reporting Info/Notes/Remarks

7. Assignments

SAFETY NOTE: Shallow, reptiles in area

8. Site Number: 47-B	9. Quad Name Star Lake	10. NOAA Chart # 11343	11. GLO Atlas Page # 47	12. County Jefferson
-------------------------	---------------------------	---------------------------	----------------------------	-------------------------

13. Site Information: 47-B Site 47-B is a small inlet that leads to a lake inside Salt Bayou Marsh. Inlet is on the North side of ICWW, approx. 13.75 miles East of High Island Bridge. Banks are covered by shrub brush. Inlet is small and difficult to see.	14. Latitude From:	N 29°41'21.03"	To:
	15. Longitude From:	W 94°10'04.70"	To:

16. Closest Boat Ramp High Island Bridge	17. Distance From Ramp 13.75 miles	18. Boat Type Flat Bottom Boat
---	---------------------------------------	-----------------------------------

19. Directions From Local Sector To reach High Island Bridge take Hwy 69 North to IH10 West to Winnie. Exit IH10 to Hwy 124 South. Continue on Hwy 124 until you cross the High Island Bridge. Turn Right at the foot of the bridge. Follow the road to the launch.	20. Closest Airport Jefferson
	21. Closest Helo Spot Jefferson

22. Trustee/Contact Numbers USCG: (409) 723-6509 RRC: (713)869-5001 USCG DUTY: (409) 719-1597 TPWD: (409)892-8666 TGLO: (800) 832-8224 NRDA: (512) 463 -9309 TCEQ: (409)781-9330 USFWS: (281) 286-8282	23. Resources at Risk Atlas Priority Medium Environmental Habitat for threatened osprey and Peregrine falcon, waterfowl, wading birds, river otter and Economic Commercial traffic	24. Width of inlet 60' in ft. 25. Water depth in ft. 2' 26. Current Medium 27. No. of Personnel 2
--	--	--

25. Booming Strategy Recommendation Boom should be configured in an exclusion pattern as to prevent oil from entering cuts. Bring sufficient anchors and rope to accomplish task.
--



29. Prepared By:	30. Reviewed by (PSC)	31. Reviewed by (OSC):
Assignment List	ICS 204 OS (Geographic Response Plan)	Project Updated:

"Response strategies may need to be modified to account for changes due to seasonality, weather conditions, spill characteristics, tides and any other considerations."

1. Incident Name	2. Operational Period (Date/Time)	Assignment List ICS 204-OS
------------------	-----------------------------------	----------------------------

3. Branch	4. Division/Group
-----------	-------------------

5. Operations Personnel	_____
Operations Section Chief	_____
Branch Director	_____
Division/Group Supervisor	_____

6. Resources Assigned This Period						"X" Indicates 204a attachment with special instructions
Resource Identifier	Leader	Contact Info #	# of Persons	Reporting Info/Notes/Remarks		

7. Assignments

SAFETY NOTE: Shallow, reptiles in area

8. Site Number: 47-C	9. Quad Name Star Lake	10. NOAA Chart # 11343	11. GLO Atlas Page # 47	12. County Jefferson
-------------------------	---------------------------	---------------------------	----------------------------	-------------------------



13. Site Information: 47-C Site 47-C consists of two inlets located across from each other on the North and South banks of the ICWW. Site is located 13.75 miles East of High Island Bridge. North inlet is Spindle top Gully, which feeds a marsh North of the ICWW. South inlet leads to Star Lake, which feeds a marsh on McFadden National Wildlife Refuge. A concrete barrier controls the water flow to this inlet, which is visible from the ICWW. There is a Ranger Station located nearby, with road access if necessary. Contact USFW if Threatened	14. Latitude From: N 29°41'10.27"	To:	15. Longitude From: W 94°11'04.20"	To:
---	---	-----	--	-----

16. Closest Boat Ramp High Island Bridge	17. Distance From Ramp 13.75 miles	18. Boat Type Flat Bottom Boat
---	---------------------------------------	-----------------------------------

19. Directions From Local Sector To reach High Island Bridge take Hwy 69 North to IH10 West, to Winnie. Exit IH10 to Hwy 124 South. Continue on Hwy 124 until you cross over High Island Bridge. Turn Right at foot of bridge. Follow road to the launch.	20. Closest Airport Jefferson County
	21. Closest Helo Spot Jefferson County

22. Trustee/Contact Numbers USCG: (409) 723-6509 RRC: (713)869-5001 USCG DUTY: (409) 719-1597 TPWD: (409)892-8666 TGLO: (800) 832-8224 NRDA: (512) 463 -9309 TCEQ: (409)781-9330 USFWS: (281) 286-8282	23. Resources at Risk Atlas Priority High Environmental Habitat for threatened osprey and Peregrine falcon, waterfowl, wading birds, river otter and Economic Commercial traffic	24. Width of inlet N 800'/S 400' in ft. 25. Water depth in ft. 16' 26. Current Medium 27. No. of Personnel 2
--	--	---

25. Booming Strategy Recommendation Boom should be configured in an exclusion pattern as to prevent oil from entering cuts. Bring sufficient anchors and rope to accomplish task.
--

AERIAL PHOTO	ON SITE PHOTO
	

29. Prepared By:	30. Reviewed by (PSC)	31. Reviewed by (OSC):
Assignment List	ICS 204 OS (Geographic Response Plan)	Project Updated:

"Response strategies may need to be modified to account for changes due to seasonality, weather conditions, spill characteristics, tides and any other considerations."

1. Incident Name	2. Operational Period (Date/Time)	Assignment List ICS 204-OS
------------------	-----------------------------------	----------------------------

3. Branch	4. Division/Group
-----------	-------------------

5. Operations Personnel	_____
Operations Section Chief	_____
Branch Director	_____
Division/Group Supervisor	_____

6. Resources Assigned This Period "X" Indicates 204a attachment with special instructions

Resource Identifier	Leader	Contact Info #	# of Persons	Reporting Info/Notes/Remarks

7. Assignments

SAFETY NOTE: Shallow, reptiles in area

8. Site Number: 47-D	9. Quad Name Star Lake	10. NOAA Chart # 11343	11. GLO Atlas Page # 47	12. County Jefferson
-------------------------	---------------------------	---------------------------	----------------------------	-------------------------

13. Site Information: 47-D Site 47-D is the intake point for Big Hill Strategic Petroleum Reserve. Site is located on the North bank of the ICWW approx. 13.25 miles East of High Island Bridge. Economic contacts: Big Hill Strategic Petroleum Reserve 409-981-8232.	14. Latitude From: N 29°40'59"	To:	15. Longitude From: W 94°11'42"	To:
--	--	-----	---	-----

16. Closest Boat Ramp High Island Bridge	17. Distance From Ramp 13.25 miles	18. Boat Type Flat Bottom Boat
---	---------------------------------------	-----------------------------------

19. Directions From Local Sector To reach High Island Bridge take Hwy 69 North to IH10 West, to Winnie. Exit IH10 to Hwy 124 South. Continue on Hwy 124 until you cross over High Island Bridge. Right immediately at foot of bridge. Follow the road to ramp.	20. Closest Airport Jefferson County
	21. Closest Helo Spot Jefferson County

22. Trustee/Contact Numbers USCG: (409) 723-6509 RRC: (713)869-5001 USCG DUTY: (409) 719-1597 TPWD: (409)892-8666 TGLO: (800) 832-8224 NRDA: (512) 463 -9309 TCEQ: (409)781-9330 USFWS: (281) 286-8282	23. Resources at Risk Atlas Priority Medium Environmental Habitat for threatened osprey and Peregrine falcon, waterfowl, wading birds, river otter and Economic Commercial traffic	24. Width of inlet 400' in ft. 25. Water depth in ft. 16' 26. Current Medium 27. No. of Personnel 2
--	---	--

25. Booming Strategy Recommendation
Boom should be configured in an exclusion pattern as to prevent oil from entering cuts. Bring sufficient anchors and rope to accomplish task.

AERIAL PHOTO



ON SITE PHOTO



29. Prepared By:	30. Reviewed by (PSC)	31. Reviewed by (OSC):
Assignment List	ICS 204 OS (Geographic Response Plan)	Project Updated:

"Response strategies may need to be modified to account for changes due to seasonality, weather conditions, spill characteristics, tides and any other considerations."

1. Incident Name	2. Operational Period (Date/Time)	Assignment List ICS 204-OS
------------------	-----------------------------------	----------------------------

3. Branch	4. Division/Group
-----------	-------------------

5. Operations Personnel	
Operations Section Chief	_____
Branch Director	_____
Division/Group Supervisor	_____

6. Resources Assigned This Period "X" Indicates 204a attachment with special instructions

Resource Identifier	Leader	Contact Info #	# of Persons	Reporting Info/Notes/Remarks

7. Assignments

SAFETY NOTE: Shallow, reptiles in area

8. Site Number: 47-E	9. Quad Name Star Lake	10. NOAA Chart # 11343	11. GLO Atlas Page # 47	12. County Jefferson
-------------------------	---------------------------	---------------------------	----------------------------	-------------------------

13. Site Information: 47-E Site 47-E is the Spindle top ditch leading to Spindle top oilfield and surrounding marsh. Inlet is located 12.25 miles East of High Island Bridge on North bank of the ICWW.	14. Latitude From: N 29°40'35"	To:	
	15. Longitude From: W 94°12'40"	To:	

16. Closest Boat Ramp High Island Bridge	17. Distance From Ramp 12.25 miles	18. Boat Type Flat Bottom Boat
---	---------------------------------------	-----------------------------------

19. Directions From Local Sector To reach High Island Bridge take Hwy 69 North to IH10 West, to Winnie. Exit IH10 to Hwy 124 South. Continue on Hwy 124 until you cross over High Island Bridge. Turn Right at foot of the bridge. Follow road to launch.	20. Closest Airport Jefferson County
	21. Closest Helo Spot Jefferson County

22. Trustee/Contact Numbers	23. Resources at Risk	24. Width of inlet 350' in ft.
USCG: (409) 723-6509 RRC: (713)869-5001	Atlas Priority Low	25. Water depth in ft. 5'
USCG DUTY: (409) 719-1597 TPWD: (409)892-8666	Environmental Habitat for threatened osprey and Peregrine falcon, waterfowl, wading birds, river otter and	26. Current Medium
TGLO: (800) 832-8224 NRDA: (512) 463 -9309	Economic Commercial traffic	27. No. of Personnel 2
TCEQ: (409)781-9330 USFWS: (281) 286-8282		

25. Booming Strategy Recommendation Boom should be configured in an exclusion pattern as to prevent oil from entering cuts. Bring sufficient anchors and rope to accomplish task.
--

AERIAL PHOTO



ON SITE PHOTO



29. Prepared By:	30. Reviewed by (PSC)	31. Reviewed by (OSC):
Assignment List	ICS 204 OS (Geographic Response Plan)	Project Updated:

"Response strategies may need to be modified to account for changes due to seasonality, weather conditions, spill characteristics, tides and any other considerations."