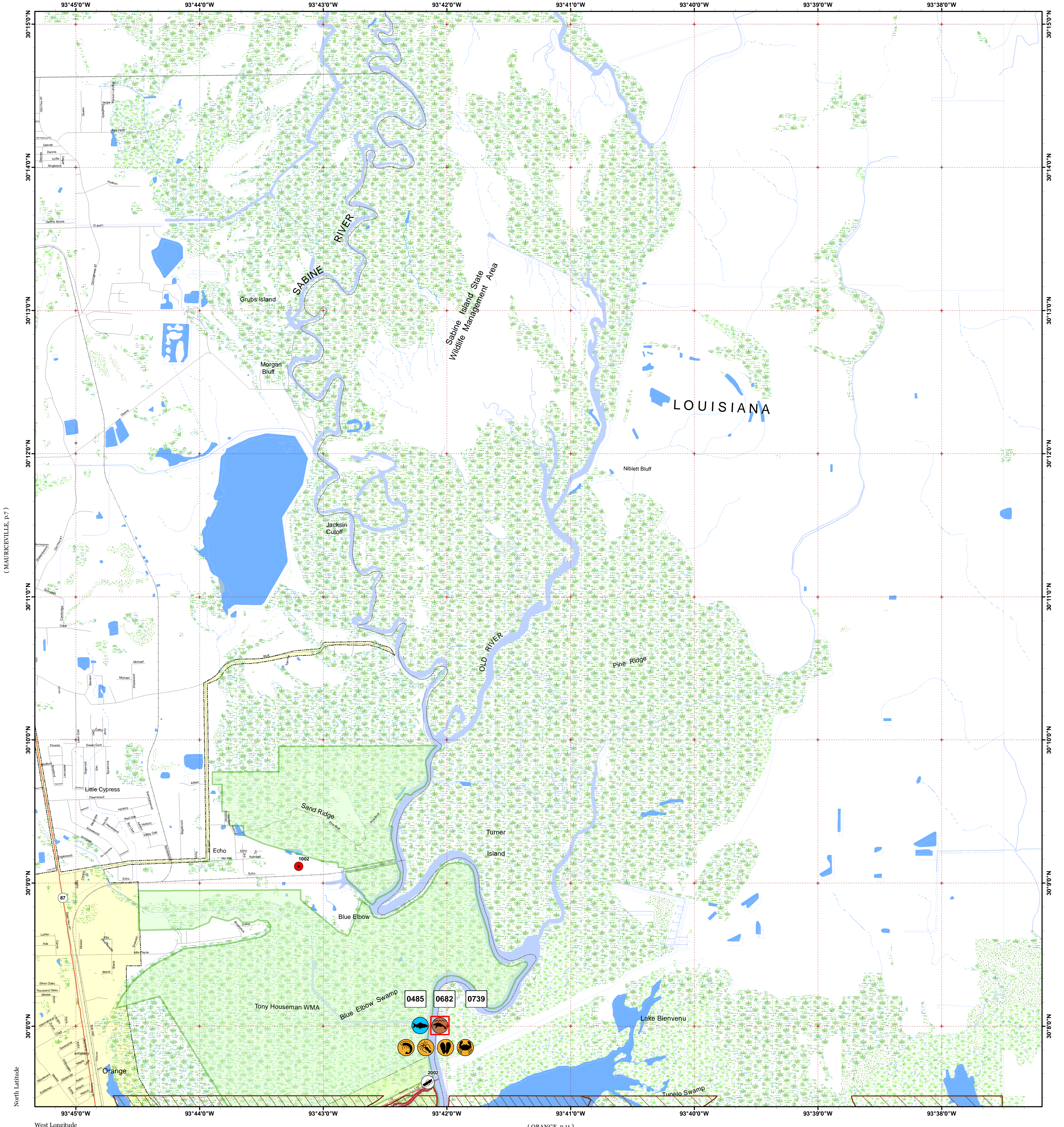


ECHO

(STARKS, p.1)

[Click Here or Scroll Down for Associated Map Data](#)

Click on the Geographic Response Plan Target to View the ICS Form



(MAURICEVILLE, p.7)

North Latitude

West Longitude

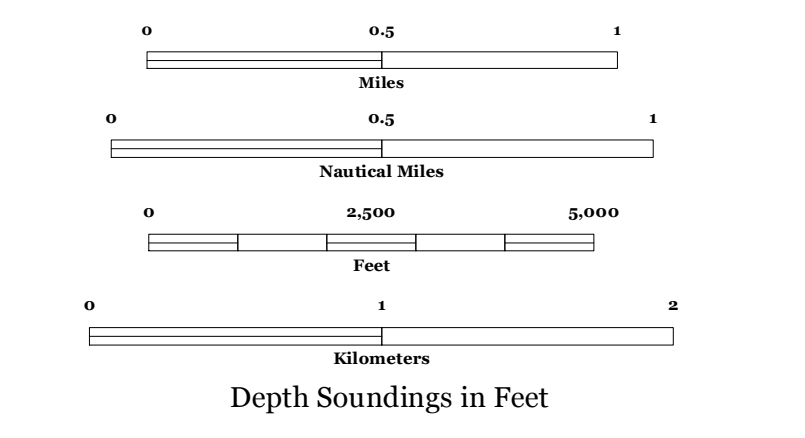
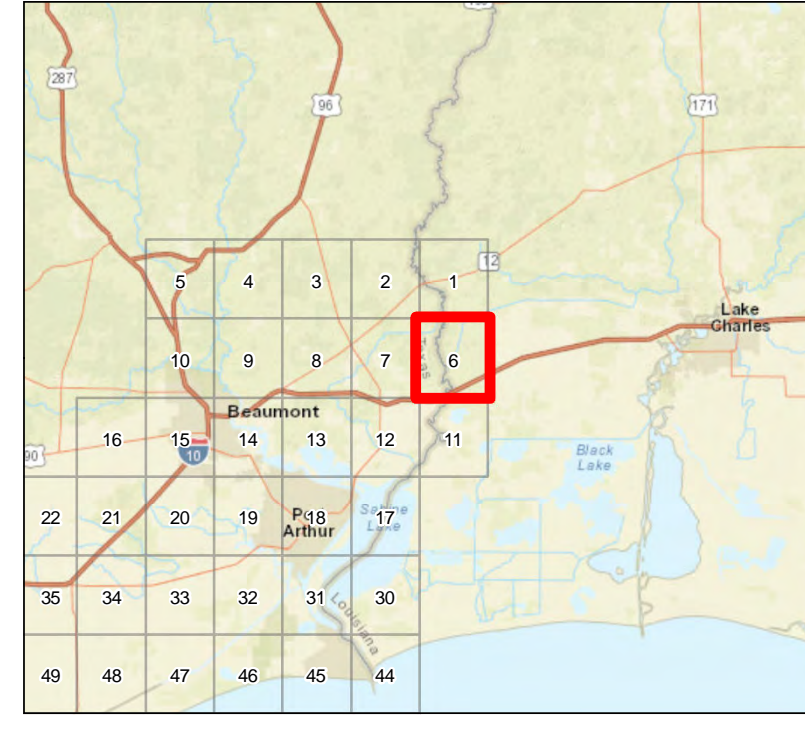
(ORANGE, p.11)



Oil Spill Planning and Response Atlas

2016

The Texas General Land Office makes no representations or warranties regarding the accuracy or completeness of the information depicted on this map or the data from which it was produced. This map is not suitable for navigational purposes and does not purport to depict boundaries of private and public land.



Human Use Features

- Boat Ramp
- Facility
- Geographic Response Plan

Map Base Layers

- Interstate Highway
- State Highway
- Railroads
- Road
- State Parks/WMA's
- Exposed Lake Shore
- Freshwater Marshes
- Swamps and Flooded Woodlands
- Willow Thickets
- Lake / Pond
- Perennial River
- County Boundary
- City Limits

Priority Protection Areas

- MEDIUM
- LOW

Species Icons Within Map Quad

- Benthic Marine
- Shrimp
- Bivalve
- Fish
- Crab
- Mammal/T/E

ENVIRONMENTAL SENSITIVITY INDEX

- 10D Mangroves and Woody Vegetation
- 10C Freshwater Swamps
- 10B Freshwater Marshes
- 10A Salt and Brackish Water Marshes
- 9 Sheltered Tidal Flats
- 8C Sheltered Rocky/Karst Shores
- 8D Sheltered Scarps
- 8B Sheltered Riprap Structures
- 8A Sheltered Solid Manmade Structures
- 7 Exposed Tidal Flats
- 6B Exposed Riprap Structures
- 6A Gravel or Shell Beaches
- 5 Mixed Sand and Gravel or Shell Beaches
- 4 Coarse-Grained Sand Beaches
- 3B Scarps and Steep Slopes in Sand
- 3A Fine-Grained Sand Beaches
- 2B Wave-Cut Clay Platforms
- 2A Scarps and Steep Slopes in Clay
- 1 Exposed Walls and Other Solid Structures

Quadrant: ECHO

Map # :6

Biological Information for this quadrant represents known concentration areas of occurrence.

Biological Resources

Fish

RARNUM	NAME	S F	T E	CONC	J	F	M	A	M	J	J	A	S	O	N	D	Spawning	Eggs	Larvae	Juveniles	Adults
0485	Gizzard shad			ABUNDANT	X	X	X	X	X	X	X	X	X	X	X	X	-	-	-	-	JAN-DEC
	Atlantic croaker			HIGHLY-ABUNDANT	X	X	X	X	X	X	X	X	X	X	X	X	-	-	JAN-JUN	JAN-DEC	JAN-DEC
	Bay anchovy			COMMON	X	X	X	X	X	X	X	X	X	X	X	X	MAR-NOV	MAR-NOV	MAR-NOV	JAN-DEC	JAN-DEC
	Black drum			COMMON	X	X	X	X	X	X	X	X	X	X	X	X	-	-	-	JAN-DEC	JAN-DEC
	Bull shark			RARE	X	X	X	X	X	X	X	X	X	X	X	X	-	MAY-AUG	MAY-AUG	APR-NOV	JAN-DEC
	Gafftopsail catfish			ABUNDANT				X	X	X	X	X	X	X			APR-MAY	-	-	APR-OCT	APR-OCT
	Gulf menhaden			ABUNDANT	X	X	X	X	X	X	X	X	X	X	X	X	-	-	-	JAN-DEC	APR-DEC
	Hardhead catfish			ABUNDANT	X	X	X	X	X	X	X	X	X	X	X	X	MAY-AUG	MAY-SEP	MAY-SEP	JUN-SEP	JAN-DEC
	Pinfish			RARE				X	X	X	X	X	X	X			-	-	-	APR-OCT	APR-OCT
	Red drum			COMMON	X	X	X	X	X	X	X	X	X	X	X	X	-	-	-	JAN-DEC	JAN-DEC
	Sand seatrout			COMMON	X	X	X	X	X	X	X	X	X	X	X	X	-	-	-	JAN-DEC	JAN-DEC
	Sheepshead			COMMON	X	X	X	X	X	X	X	X	X	X	X	X	-	-	-	DEC-FEB	JAN-DEC
	Southern flounder			COMMON	X	X	X	X	X	X	X	X	X	X	X	X	-	-	-	JAN-DEC	JAN-DEC
	Spot			HIGHLY-ABUNDANT			X	X	X	X	X	X	X	X	X		-	-	-	MAR-OCT	MAR-NOV
	Spotted seatrout			COMMON	X	X	X	X	X	X	X	X	X	X	X	X	APR-OCT	APR-OCT	APR-OCT	OCT-NOV	JAN-DEC
	Star drum			-	X	X	X	X	X	X	X	X	X	X	X	X	-	-	-	-	-
	Striped mullet			COMMON	X	X	X	X	X	X	X	X	X	X	X	X	-	-	-	JAN-DEC	JAN-DEC
	Tarpon			RARE			X	X	X	X	X	X	X	X	X		-	-	-	MAR-NOV	-
	White mullet			COMMON						X	X	X	X				-	-	-	JUN-SEP	-
	Gulf killifish			COMMON	X	X	X	X	X	X	X	X	X	X	X	X	MAR-SEP	MAR-SEP	MAR-OCT	JAN-DEC	JAN-DEC
	Silver perch			RARE	X	X	X	X	X	X	X	X	X	X	X	X	MAY-SEP	MAY-SEP	MAY-SEP	OCT-NOV	JAN-DEC
	Silversides			COMMON	X	X	X	X	X	X	X	X	X	X	X	X	MAR-AUG	MAR-AUG	MAR-AUG	JAN-DEC	JAN-DEC
	Alligator gar			COMMON	X	X	X	X	X	X	X	X	X	X	X	X	-	-	-	JAN-DEC	JAN-DEC
	Spotted gar			ABUNDANT	X	X	X	X	X	X	X	X	X	X	X	X	APR-MAY	APR-MAY	-	JAN-DEC	JAN-DEC
	Atlantic spadefish			RARE						X	X	X	X				-	-	-	JUL-OCT	-
	Bay whiff			RARE	X	X	X	X	X	X	X	X	X	X	X	X	-	-	-	JUL-AUG	JAN-DEC
	Spotfin mojarra			RARE								X	X				-	-	-	-	-
	Atlantic bumper			RARE								X	X				-	-	-	-	AUG-SEP
	Crevalle jack			COMMON						X	X	X					-	-	-	JUN-AUG	-
	Spanish mackerel			COMMON									X	X			-	-	-	SEP-OCT	SEP-OCT

Invertebrate

RARNUM	NAME	S F	T E	CONC	J	F	M	A	M	J	J	A	S	O	N	D	Spawning	Eggs	Larvae	Juveniles	Adults
0682	Atlantic rangia			ABUNDANT	X	X	X	X	X	X	X	X	X	X	X	X	MAR-OCT	-	MAR-OCT	JAN-DEC	JAN-DEC
	Blue crab			ABUNDANT	X	X	X	X	X	X	X	X	X	X	X	X	MAR-NOV	-	MAR-NOV	JAN-DEC	JAN-DEC
	Brown shrimp			ABUNDANT			X	X	X	X	X	X	X	X	X	X	-	-	MAR-APR	APR-DEC	-
	Grass shrimp			COMMON	X	X	X	X	X	X	X	X	X	X	X	X	JAN-DEC	JAN-DEC	JAN-DEC	JAN-DEC	JAN-DEC
	White shrimp			HIGHLY-ABUNDANT	X	X	X	X	X	X	X	X	X	X	X	X	-	-	MAY-JUN	APR-DEC	MAR-JAN

Marine Mammal

RARNUM	NAME	S F	T E	CONC	J	F	M	A	M	J	J	A	S	O	N	D	Mating	Calving	Pupping	Molting
0739	West Indian manatee	S/F	E/E	VERY-RARE						X	X	X					-	-	-	-

Human Use Resources

	RARNUM	NAME	CONTACT	CONTACT INFO
Boat Ramp	2002	IH 10 Ramp		orangesabine@ih10ramp
Facility	1002	Orion Engineered Carbons, LLC (Orange Carbon Black Plant)	Steven Burgin	409-980-7905