



TEXAS GENERAL LAND OFFICE
COMMISSIONER DAWN BUCKINGHAM, M.D.

1700 N. Congress Ave. • Austin, TX 78701-1495 • 512-463-5339 • FAX: 512-475-1415

PRESS RELEASE

Texas General Land Office Monitoring Multiple Storms Systems, Commissioner Dawn Buckingham Initiating Readiness for Potential Impacts

Coastal Texans should be aware of potential tropical storm and hurricane risks

FOR IMMEDIATE RELEASE
July 01, 2024

Contact: Brittany Eck
(512) 963-7800
brittany.eck@glo.texas.gov

AUSTIN — Today Texas Land Commissioner Dawn Buckingham, M.D. announced that the Texas General Land Office is monitoring three active Atlantic systems with a possibility of impacting Texas.

"The Texas General Land Office stands ready to help Texans prepare for, and recover from, hurricanes and tropical storms," said Commissioner Buckingham. "The GLO is monitoring the current storm systems in the Atlantic and will increase readiness procedures as needed in accordance with emergency preparedness plans. I urge all Texans to take the time now to prepare your evacuation kits and plan evacuation routes should the need arise."

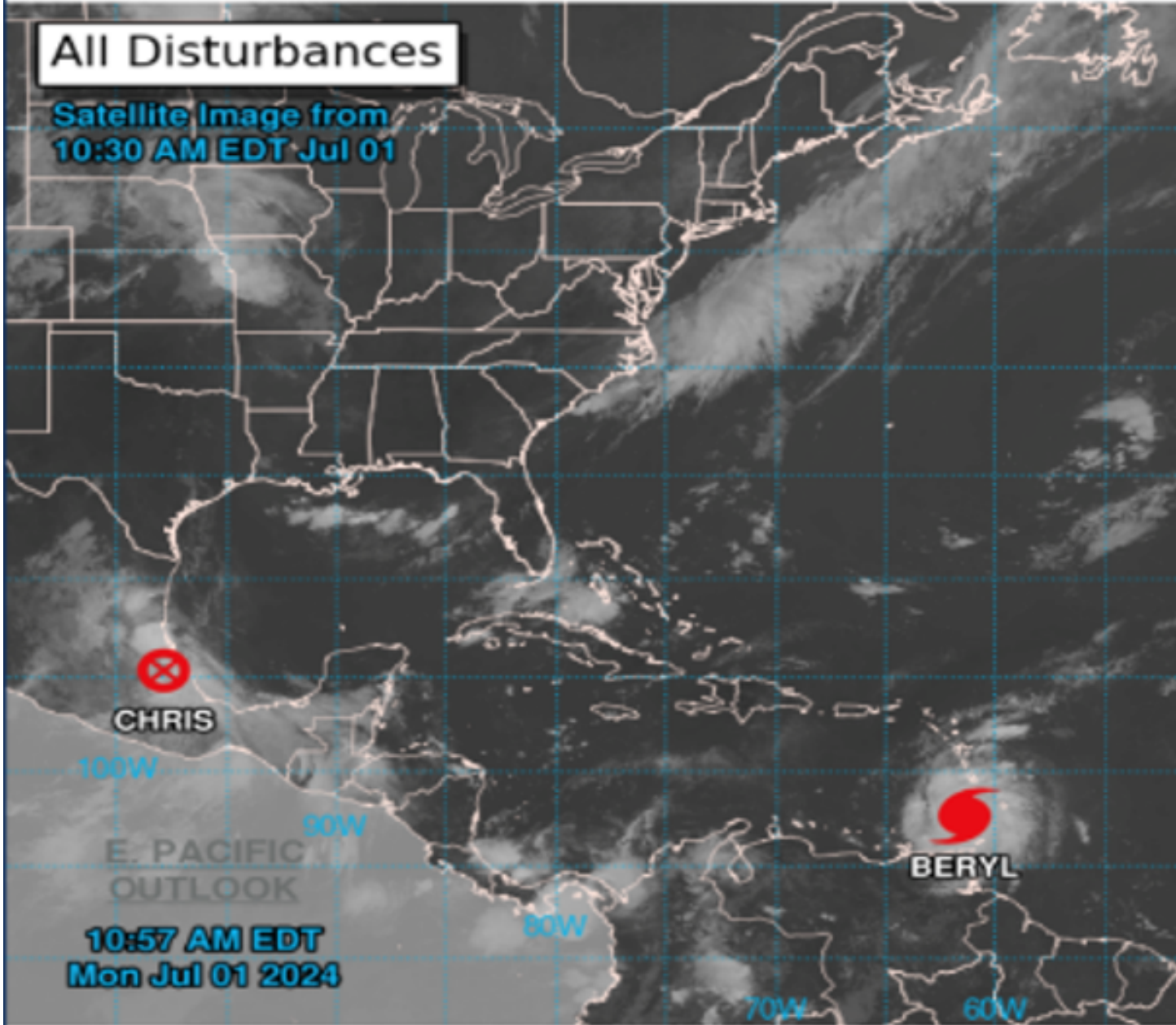
NHC 48 Hour Outlook



Two-Day Graphical Tropical National Hurricane Center

All Disturbances

Satellite Image from
10:30 AM EDT Jul 01



10:57 AM EDT
Mon Jul 01 2024

Current Disturbances and Two-Day Cyclone Formation Cha
Tropical or Sub-Tropical Cyclone: ○ Depres
⊗ Post-Tropical Cyclone o

According to the National Hurricane Center, the eye of Hurricane Beryl made landfall on Carriacou Island at 11:10 AM AST. Data indicates that Beryl's maximum sustained

winds have increased to 150 mph. For weather watches, warnings and advisories for Texas, visit <https://alerts.weather.gov/cap/tx.php?x=1>.

The GLO encourages Texans to follow the following early warning preparedness tips:

- Monitor storm systems in the Atlantic and Gulf of Mexico. Watch local news and follow the National Hurricane Center on [Twitter](#) or [Facebook](#).
- Review your [Disaster Evacuation Checklist](#) and have your “Go Bag” ready in case of evacuation.
- Know your available evacuation routes and review them with your family. Be sure to plan multiple routes and be ready for potential road closures.

For additional safety tips related to storm surge, flooding, and other dangers, visit recovery.texas.gov/preparedness.